

# For Sublease

## High-end plug-and-play at 540 Madison Avenue

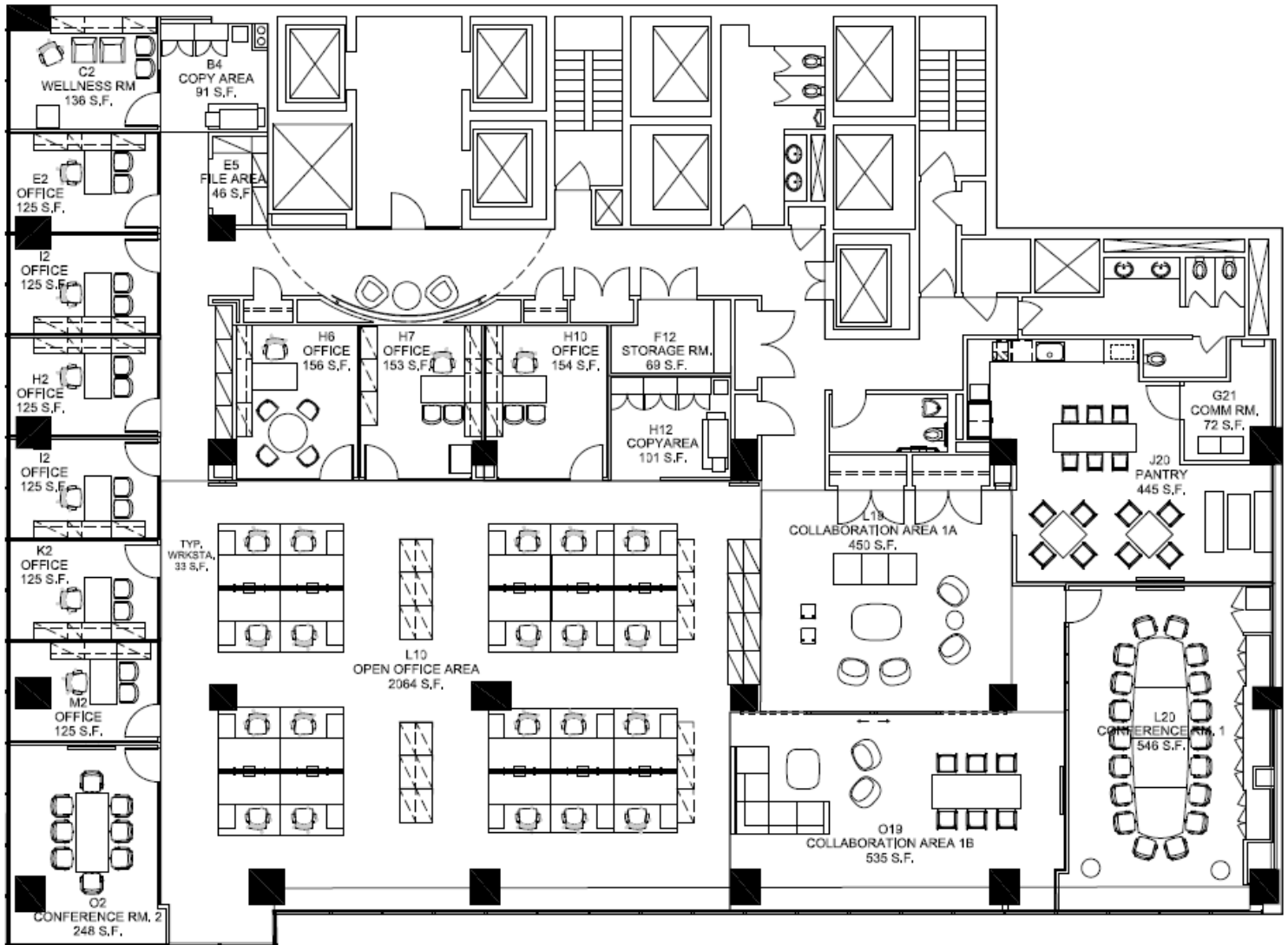
- Entire 5<sup>th</sup> Floor – 10,900 RSF:
  - Configuration includes 7 windowed offices, 3 interior offices, 18-person boardroom, 8-person conference room, large collaboration space, café style pantry, and open area for 20 people
  - Furnished & wired / plug & play sublease
  - Supplemental HVAC
- Full floor availability in prestigious Plaza District building
- Amenity center located on the 11<sup>th</sup> & 12<sup>th</sup> floors

## 540 Madison Avenue

### Sublease Terms

- Possession is immediate
- Term through May 30, 2026

# Entire 5<sup>th</sup> Floor - As-Built Plan





# Entire 5<sup>th</sup> Floor - Existing Conditions

