



40 W 25TH ST

Sublease | Entire 9th Floor
11,187 RSF

Rate: Upon request

Availability: Immediate

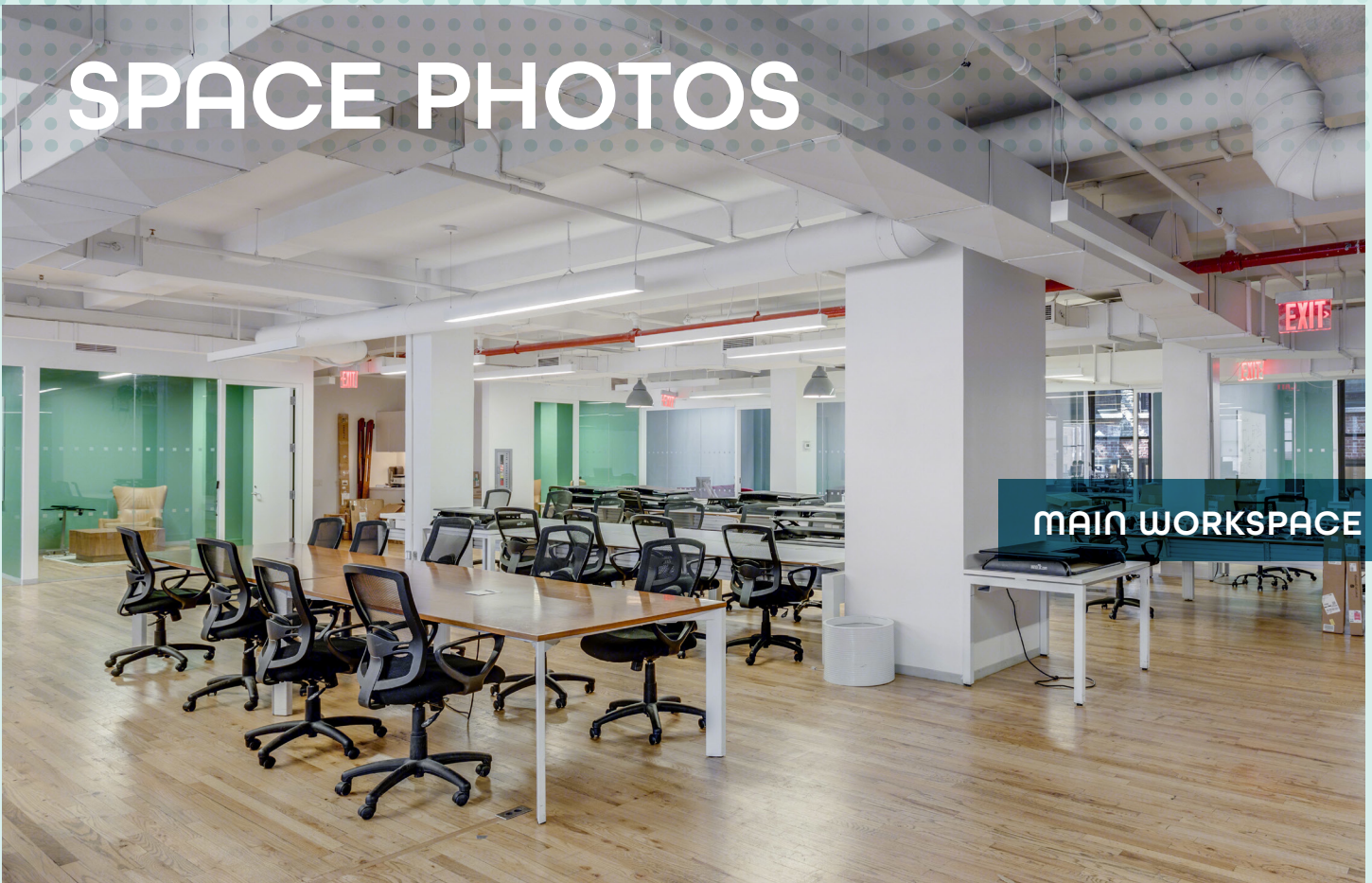
Term: March 31, 2024

KEY HIGHLIGHTS

- Creative installation with wood flooring & exposed ceiling throughout
- Steps from Madison Square Park
- Fully furnished & wired
- Beautiful views



SPACE PHOTOS



MAIN WORKSPACE



OFFICE SPACE



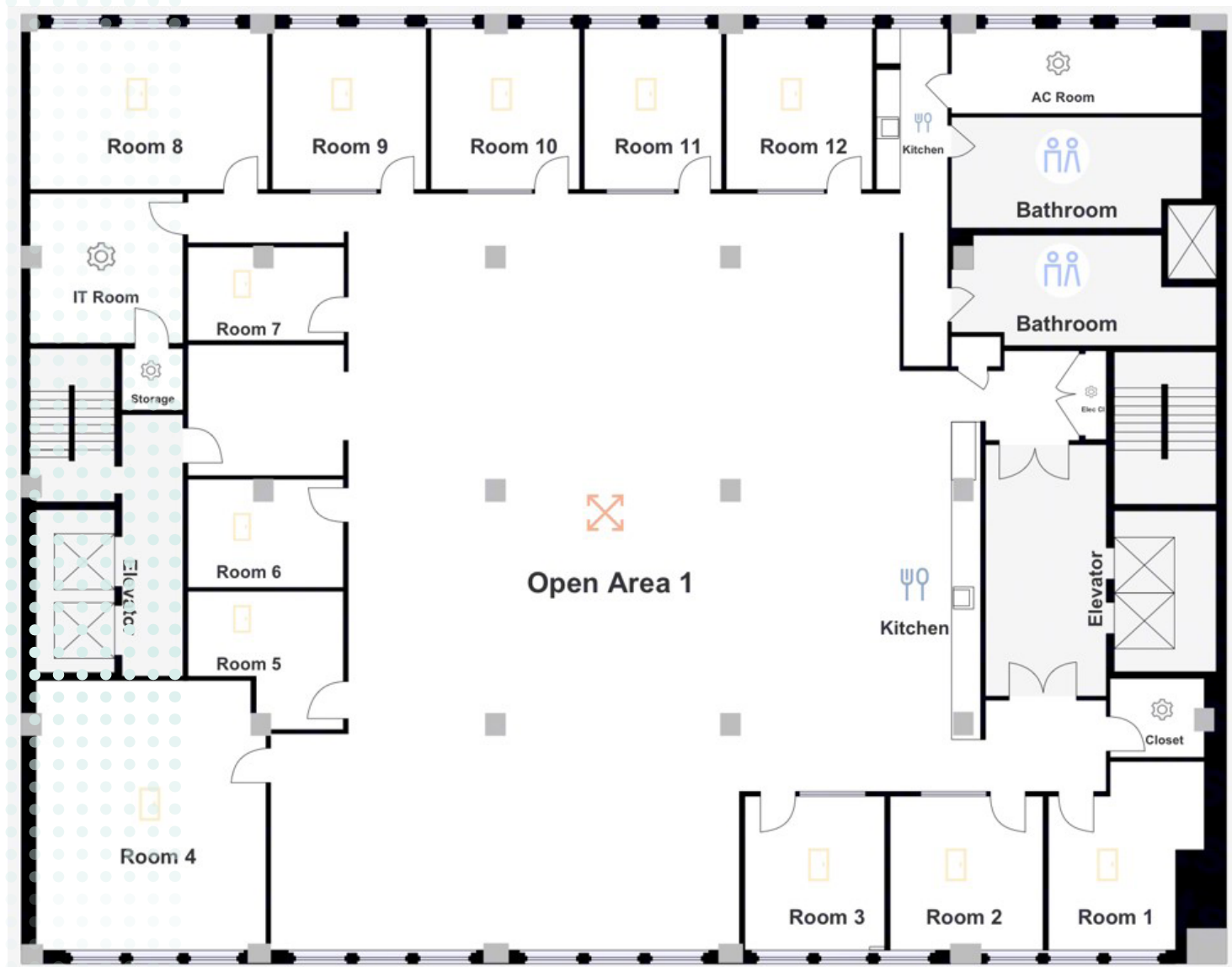
CONFERENCE ROOM



KITCHEN



OFFICE SPACE

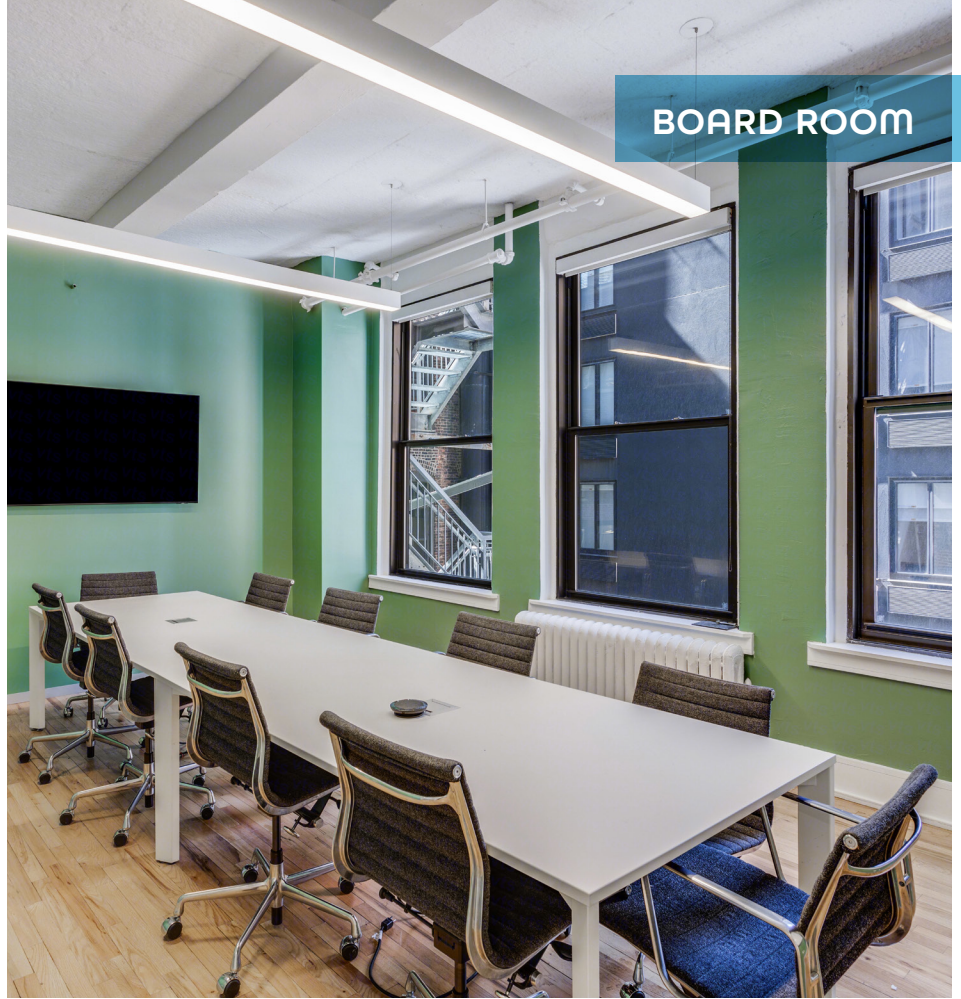


FLOOR PLAN

ENTIRE 9TH FLOOR | 11,187 RSF

1	BOARDROOM
1	CONFERENCE ROOM
10	MEETING ROOMS/OFFICES
75+	WORKSTATIONS
2	KITCHENS

BOARD ROOM



PRIVATE OFFICE

