

# 510 MADISON

ENTIRE 11<sup>TH</sup> FLOOR: 11,500 RSF

## SUBLEASE

SOUTHWEST CORNER OF 53RD STREET



# 510 MADISON

S U B L E A S E

BETWEEN 52ND AND 53RD STREETS



## FLOOR/AREA

Entire 11<sup>th</sup> Floor: 11,500 RSF

## POSSESSION

Arranged

## TERM

Through June 2025 or June 2028

## ASKING RENT

Upon request

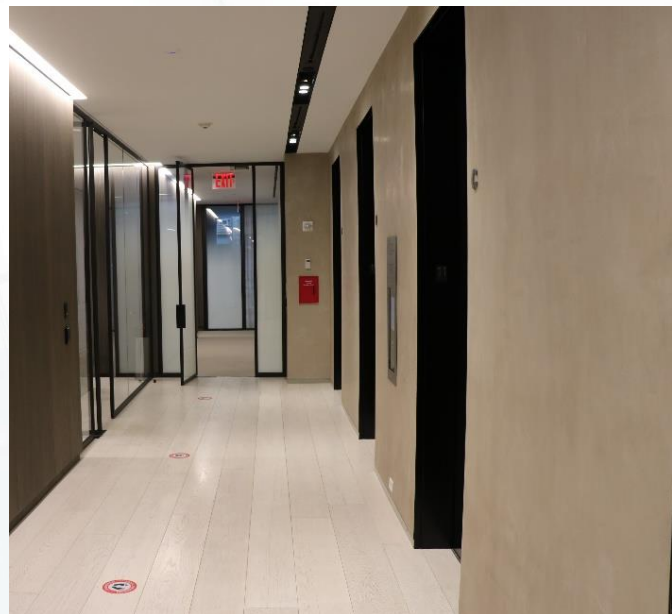
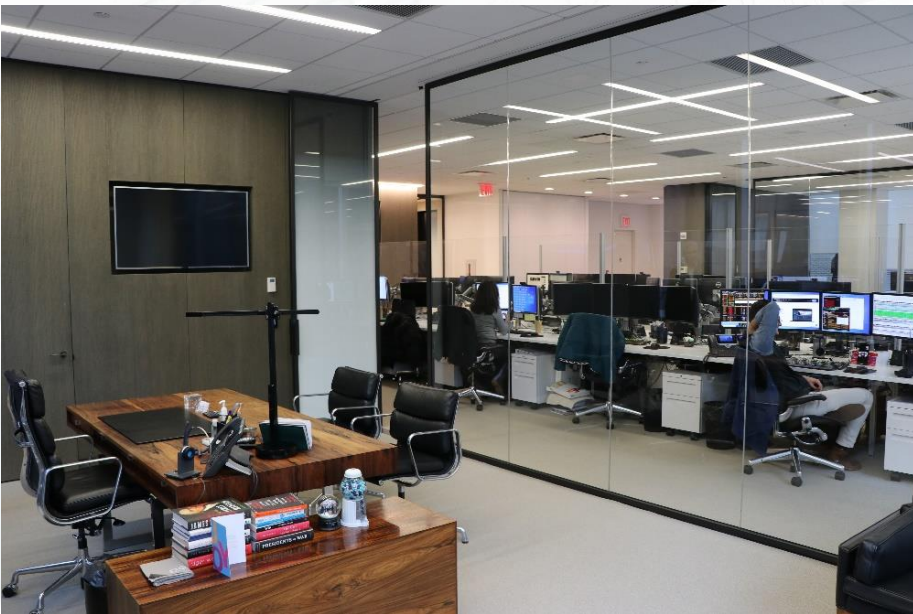
## COMMENTS

- High-end installation with furniture and technology in place
- Three (3) conference rooms (16 ppl, 10 ppl, 8 ppl)
- Eight (8) offices (Large executive office has private restroom & shower)
- Twenty-eight (28) trading desks
- Exclusive golf simulator within the premises
- Electric window blinds
- Exclusive Tenant Amenity center







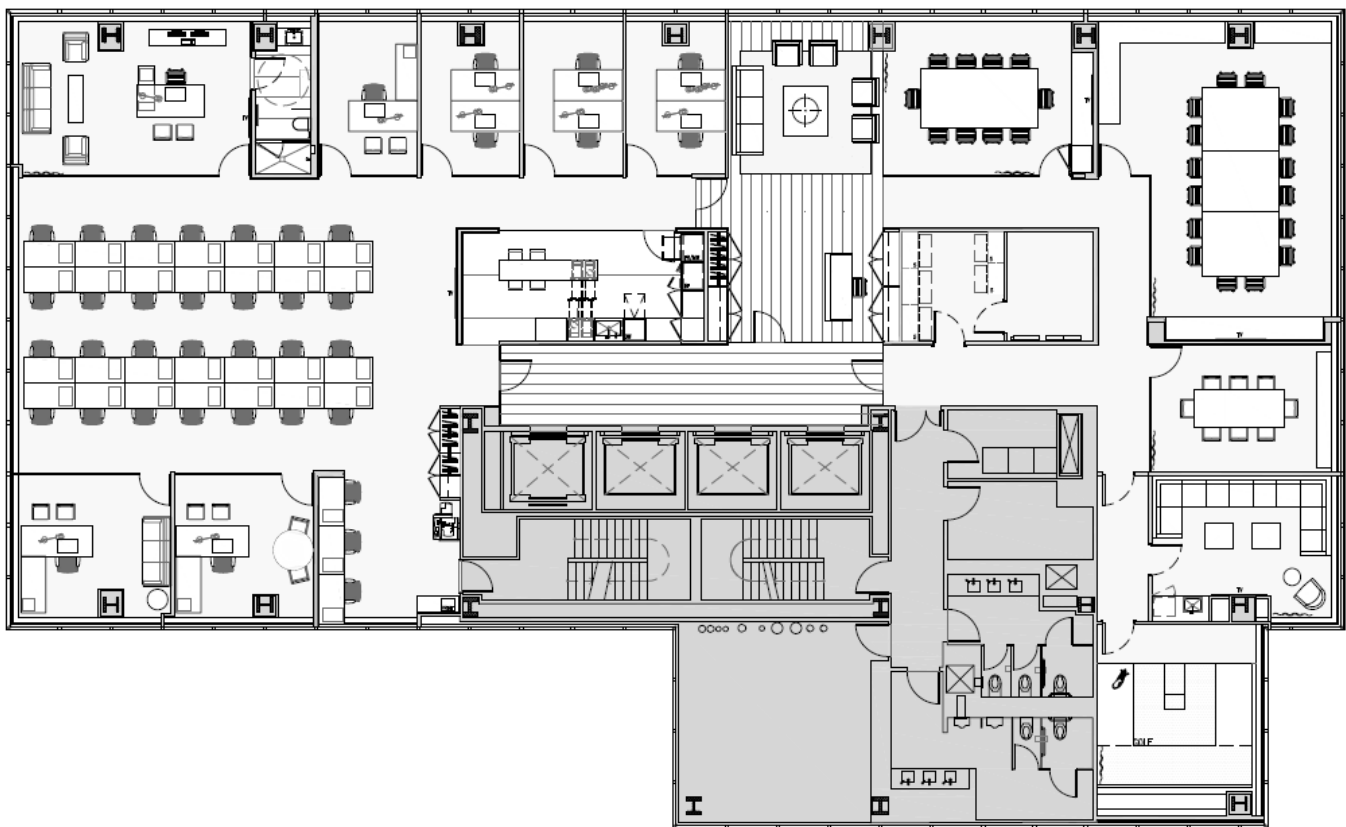


ENTIRE 11<sup>TH</sup> FLOOR: 11,500 RSF

53RD STREET

EAST 53RD STREET

MADISON AVENUE





# 510 MADISON

ENTIRE 11<sup>TH</sup> FLOOR: 11,500 RSF

## SUBLEASE

SOUTHWEST CORNER OF 53RD STREET