

25^{WEST} 39TH STREET

AVAILABLE/SPACE:

SPACE	SIZE (RSF)	CEILING (FT)
Entire 9th Floor	11,880	11'5"

LENGTH/TERM:

Negotiable

POSSESSION/DATE:

Immediate

SPECIAL/AMENITIES:

- On-site, executive parking
- High ceilings, and a beautiful, furnished, tenant-only rooftop terrace
- On-site conference center
- 26,595 SF contiguous block of space available across the 3rd and 4th floors

BUILDING/HIGHLIGHTS:

- Ideal for TAMI tenants as well as other creative and traditional uses
- Highly efficient floor plates
- HVAC extended hours
- Owner occupied building
- 24-hour security controlled entry and monitoring
- Steps to public transportation:



AVISON
YOUNG

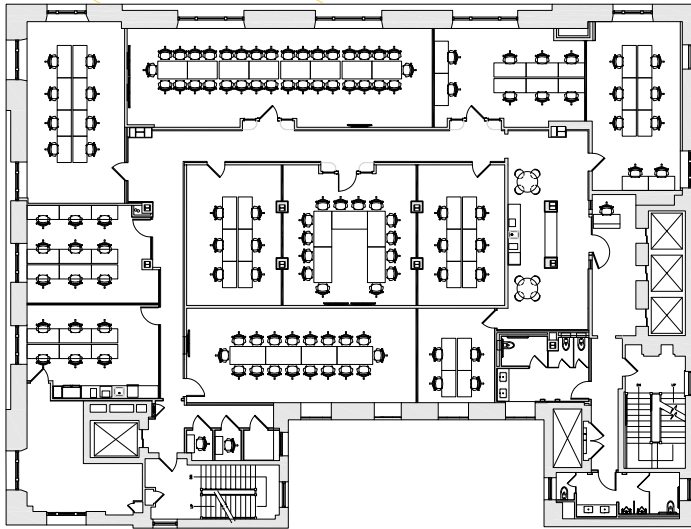


BETWEEN FIFTH AVENUE AND AVENUE OF THE AMERICAS

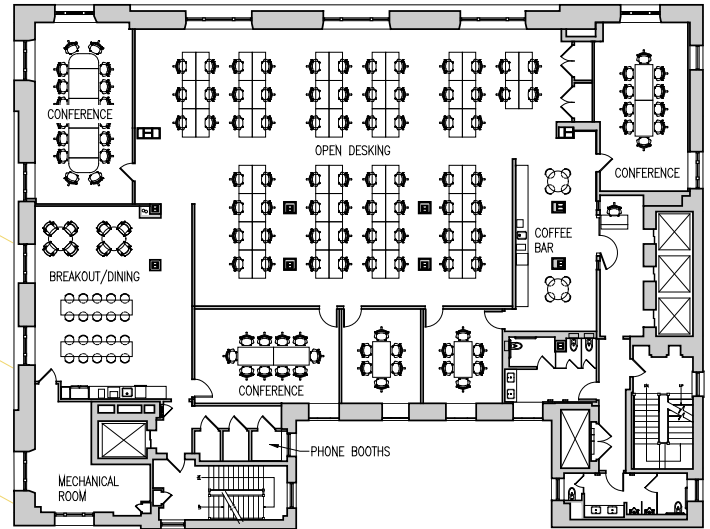
FLOOR PLANS

9TH FLOOR EXISTING CONDITIONS & TEST FIT / 11,880 RSF

EXISTING CONDITIONS



POTENTIAL LAYOUT



OFFICE / HIGHLIGHTS:

- Existing open and furnished conference center
- High-end finishes
- Landlord will modify or provide NBI for a long-term deal

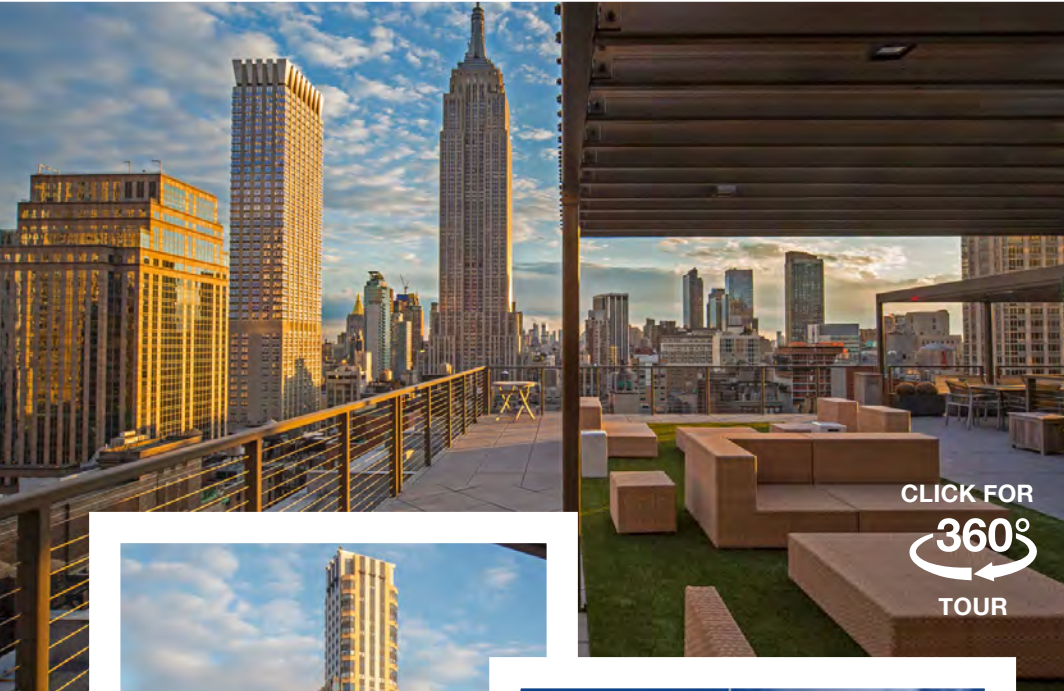


CLICK FOR
360°
TOUR

25 WEST
39TH
STREET

TENANT-ONLY ROOFTOP

- Fully furnished and open to all tenants
- Enjoy panoramic views of the Empire State Building and Lower Manhattan



CLICK FOR
360°
TOUR

