



# 555

## WEST 25TH STREET

BETWEEN TENTH AND ELEVENTH AVENUES



# BUILDING OVERVIEW

- Full floor office space available
- Tenant controlled HVAC
- Private keyed elevator entry/video security system
- On-site super
- 400 AMPS per floor
- 3 Sides of light on every floor
- 12' Ceiling heights





# 555 WEST 25TH STREET

Full 6th Floor

## SIZE

9,090 RSF + 3,000 RSF Terrace

## POSSESSION

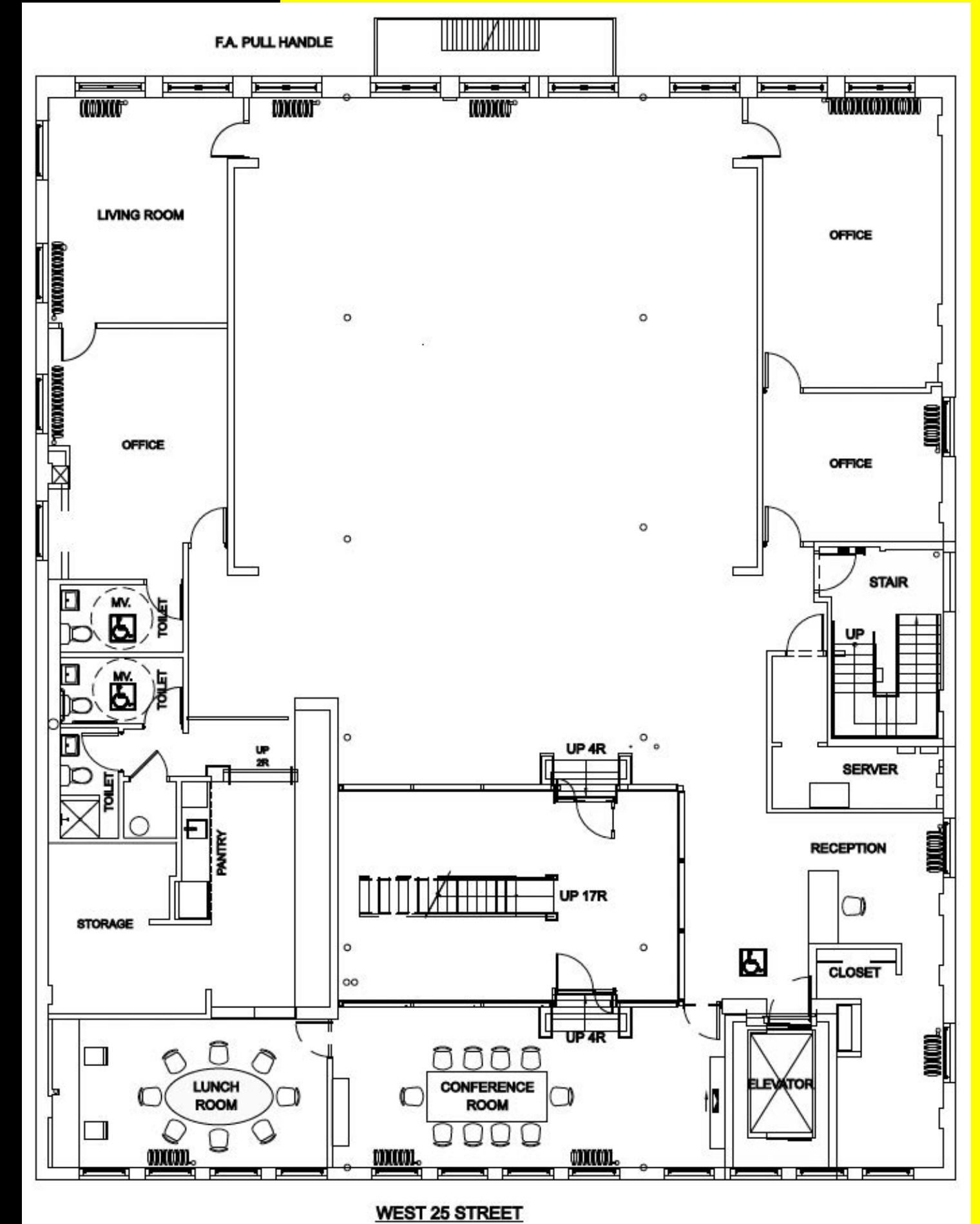
Immediate

## TERM

3-10 Years

## HIGHLIGHTS

- Renovated pre-built full floor with:
  - 5 Offices
  - Large conference room
  - Open area
  - Wet pantry with Miele appliances
  - 3 Private restrooms (one with shower)
  - Reception
- Private roof access, private garden atrium, wood burning fireplace and river views





# 555 WEST 25TH STREET

Full 6th Floor





# 555 WEST 25TH STREET

Full 6th Floor





