



SIZE

**PARTIAL
12TH FLOOR**

12,358 RSF

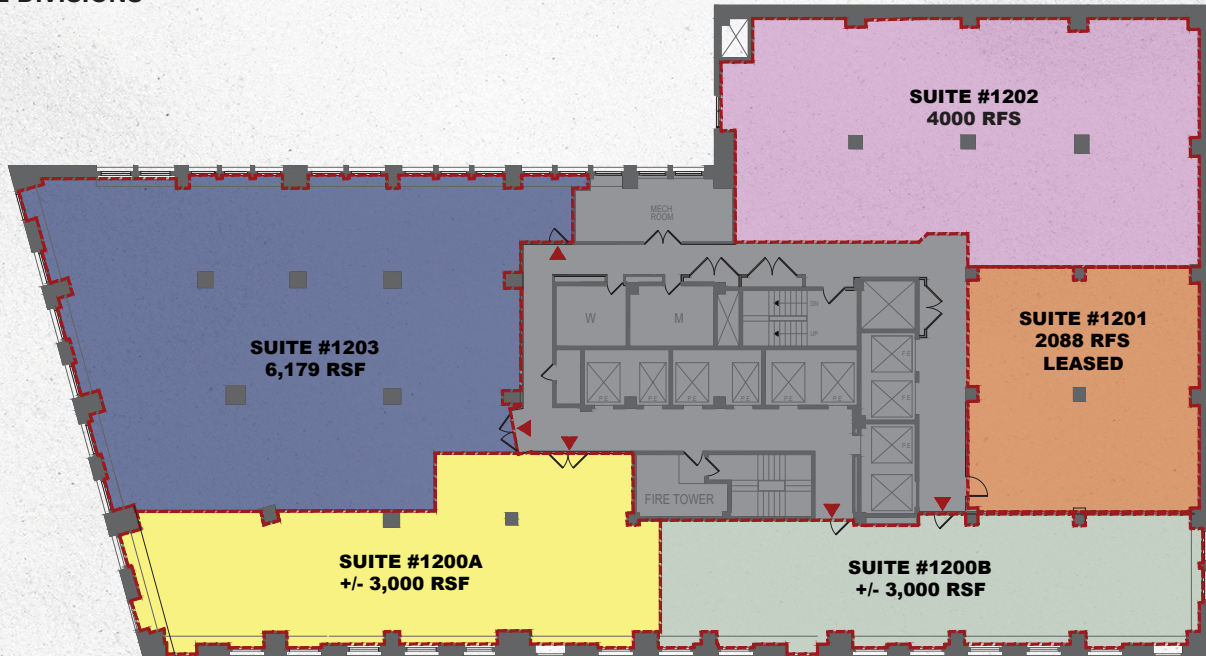
ASKING RENT
Upon Request

CAM CHARGES
Sub metered at 108%

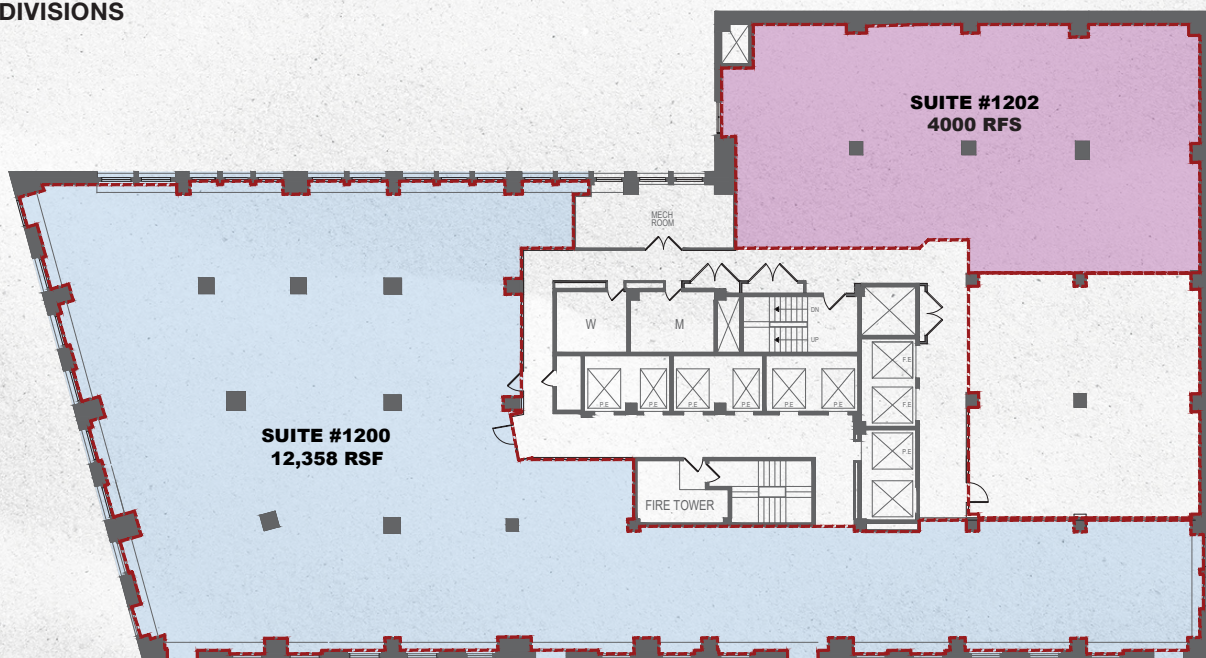
PARTIAL 12TH FLOOR - SUITE 1200

The 12th floors is the crossover floor in the building which benefits from service from all elevators in the building and provides direct access to the rooftop bar lounge. Currently demolished space, landlord will build to suit per a mutually agreed-upon plan. Building features eight dedicated elevators, tenant-controlled AC, and 24/7 attended lobby. All reasonable divisions considered.

EXAMPLE DIVISIONS



ACTUAL DIVISIONS



ELSIE ROOFTOP

Twenty-five stories up near Bryant Park sits the lavish Elsie Rooftop paying homage to society's doyenne. Offering progressive mixology and an upscale seasonally focused light fare menu, which perfectly compliments every cocktail. Located on the 25th floor penthouse — Elsie is truly an all-season destination with stylish indoor and outdoor seating options.

