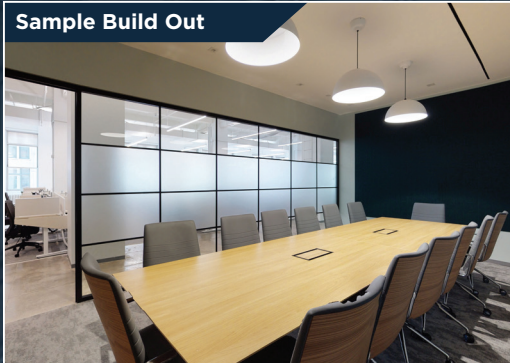




Sample Build Out



Sample Build Out



257

Park Avenue South

At East 21st Street

Prime Office Space Available in Midtown South

257 Park Avenue South

Highlights

Newly renovated entrance and lobby with restored sculpted ceiling

New elevator cabs


20-story 226,000 SF building

Concierge, 24/7 access, video monitors

Building tenants include Environment Defense Fund, Madison Logic, Nuveen, FedEx Office, and Blue Bottle Coffee

Area retailers and destinations include: BLT Prime, Chipotle, ABC Carpet & Home, Victoria's Secret, Barnes & Noble, Gramercy Tavern, Baruch College, Gramercy Park Hotel, School of Visual Arts, National Arts Club, and Gramercy Theatre

Near Gramercy, Madison, and Union Square Parks, as well as Union Square Greenmarket

Subway transportation 

Full Floor Office Space
Opportunities in the Heart of
Vibrant Midtown South

Up to 37,851 RSF
3 Contiguous Full Floors
Available

Floors May be Leased Separately or Together

Entire 4th Floor

12,617 RSF

Possession Available April 2021

Entire 5th Floor

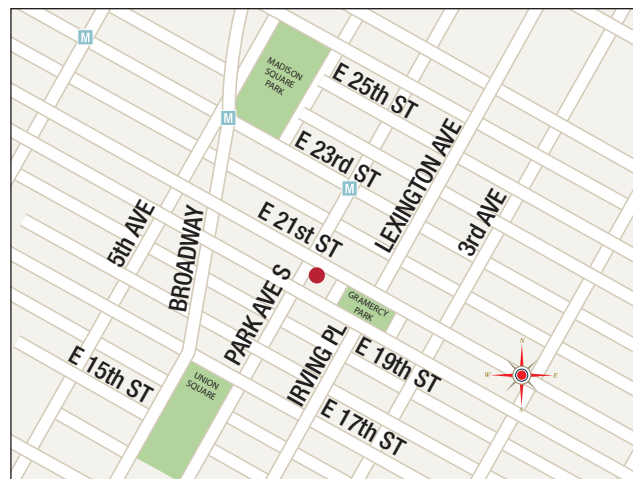
12,617 RSF

Possession Available Immediately

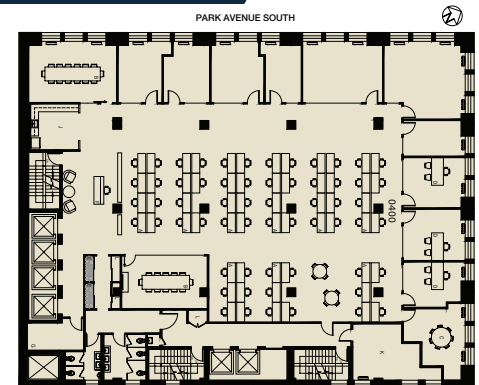
Entire 6th Floor

12,617 RSF

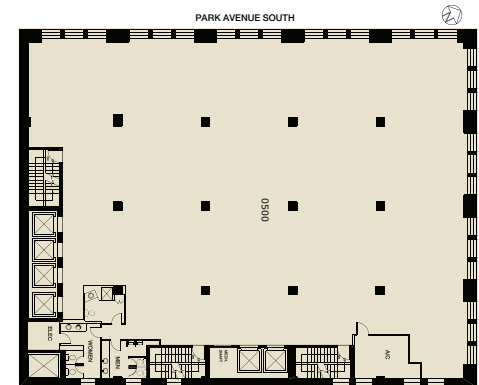
Possession Available Immediately



4th Floor
12,617 RSF
Sample Floor Layout



5th Floor
12,617 RSF



6th Floor
12,617 RSF
Sample Floor Layout

