

RECENTLY BUILT / MOVE-IN INSTALLATION



Space Profile

Size: **13,671 SF**

Floor(s): **Entire 9th**

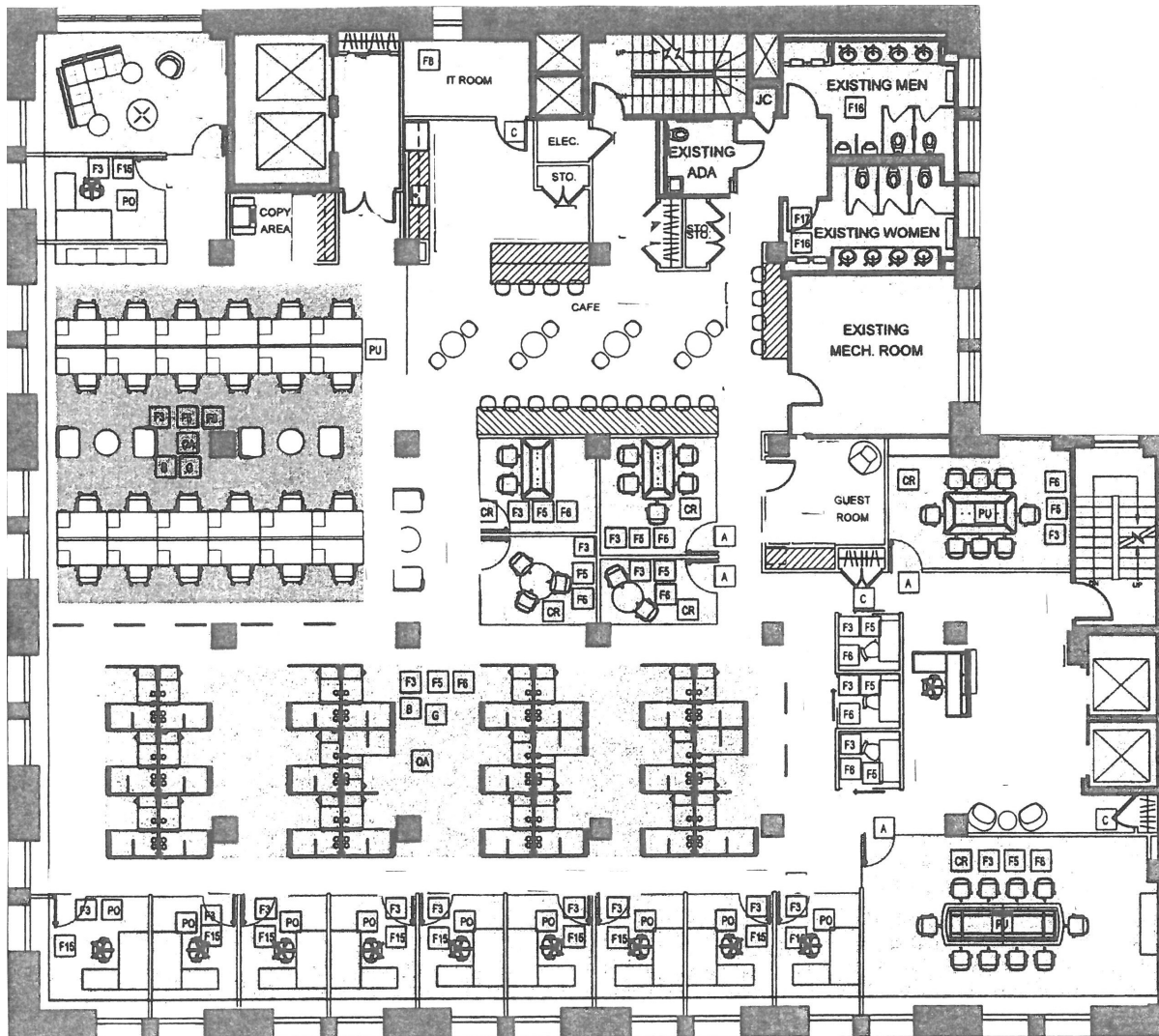
Rent: **Upon Request**

Availability: **Immediate**

Term: **Through December 31, 2024
or January 30, 2028**

Key Highlights

- Plug & Play, Gramercy Park sublease
- Financially strong sublandlord
- Mixture of offices/huddle rooms, conference rooms, phone rooms, 45+/- open area seats and café style pantry
- Newly renovated elevator cabs / shared tenant amenity roof-deck
- Walking distance to 4,5,6,L,N,Q,R Subway lines and PATH Trains



Space Overview

10	Offices	4	Huddle rooms
1	Executive office	3	Phone rooms
1	Guest office / huddle room	45±	Open area seats
1	10-person conference room		Lounge area café style pantry
1	8-person conference room		

SUBLEASE 300 Park Avenue South, New York, NY

