



619 WEST 54TH STREET

Modern Turnkey Space

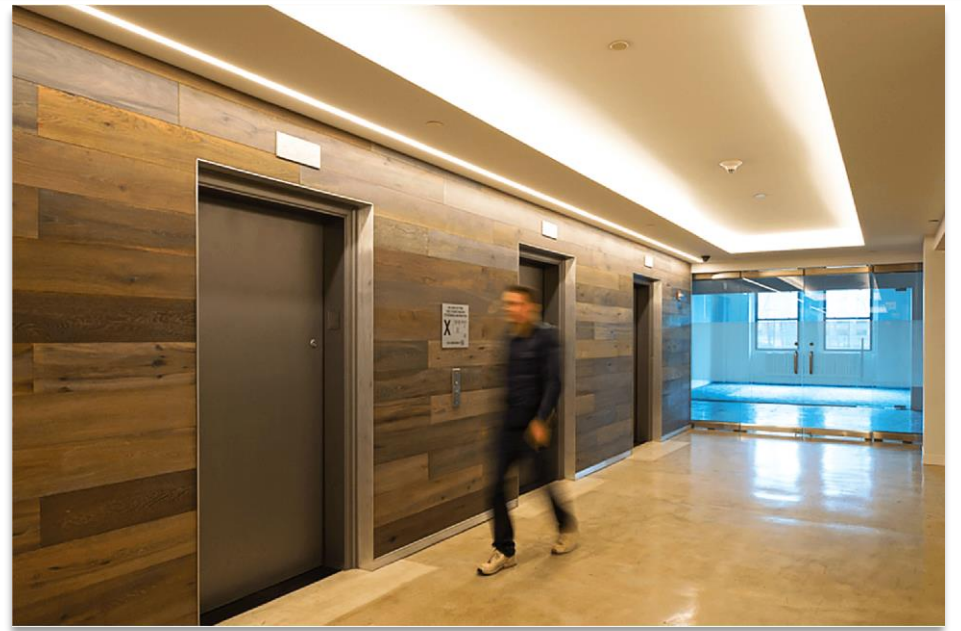
- Brand New, High-End Prebuilt to be Complete February 1, 2022
- Ultra High-End Pantry
- Polished Concrete Floors
- Glass Fronted Offices
- Available On-Site Gated Parking
- Access to 787 Eleventh Avenue Roof Deck
- Breathtaking River Views
- Abundant Natural Light Facing South Overlooking DeWitt Clinton Park
- Bike Room and Shower Access, plus Preferential Membership at Mercedes House Gym

Available Space:	Partial 6 th Floor – 13,892 RSF
Possession:	Immediate
Term:	10 years
Asking Rent:	Upon Request





787 Eleventh Avenue Roof Deck



Partial 6th Floor: 13,892 RSF

CEILING HEIGHTS	Ground Floor: 16'
(BEAM FREE)	2nd - 9th Floors: 11'4"
	10th Floor: 11'6"
COLUMN SPACING	20' on center
FLOOR LOADS	Ground, 2nd & 3rd floors: 250lbs PSF
	4th -10th floors: 150lbs PSF

619
WEST 54TH
STREET

6TH FLOOR

OPTION 1

LEGEND

WORKSPACE SEATS

PRIVATE OFFICE	3
WORKSTATION	81
RECEPTION	1
TOTAL HEADCOUNT	85

COLLABORATIVE SPACE

CONFERENCE	1
MEETING ROOM	3
OPEN LOUNGE	1

SUPPORT

PANTRY	1
COAT CLOSET	1
COPY	1
STORAGE	1
IT ROOM	1
WELLNESS ROOM	1

