

1407

BROADWAY



FLOOR / AREA

Entire 26th Floor - 13,500 RSF

Entire 25th Floor - 13,500 RSF

POSSESSION

Immediate

ASKING RENT

Upon Request

SUBLEASE TERM

Through October 2026

(Sublandlord will accept shorter term lengths)

COMMENTS

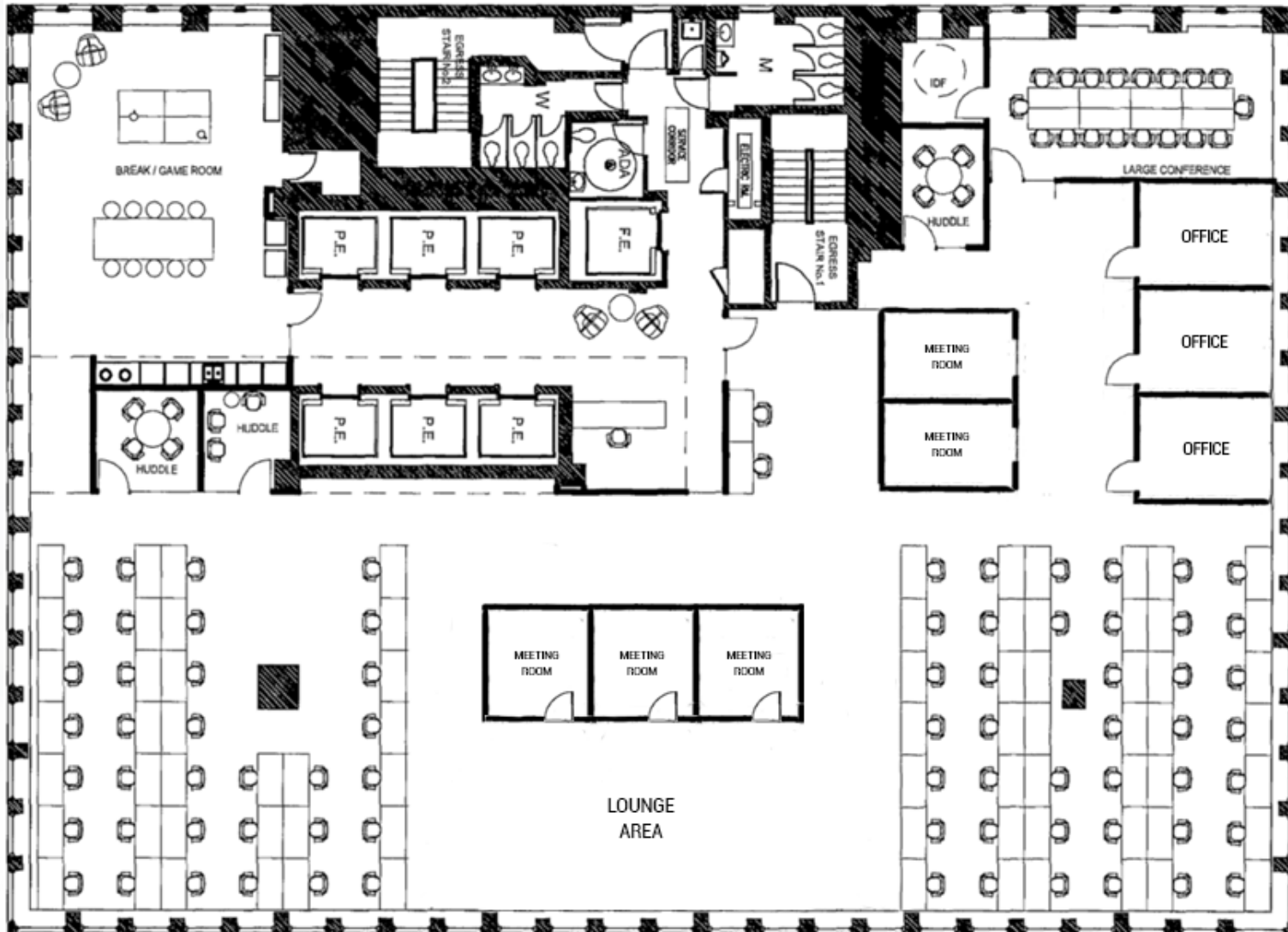
- 27,000 RSF contiguous over two floors
- Credit worthy Sublandlord
- 3 sides of light on each floor
- Recently renovated lobby, elevators, and mechanicals
- Walking distance from Grand Central, Penn Station, and Port Authority Bus Terminal
- Tenant controlled HVAC



FLOOR PLAN

Entire 26th Floor - 13,500 RSF

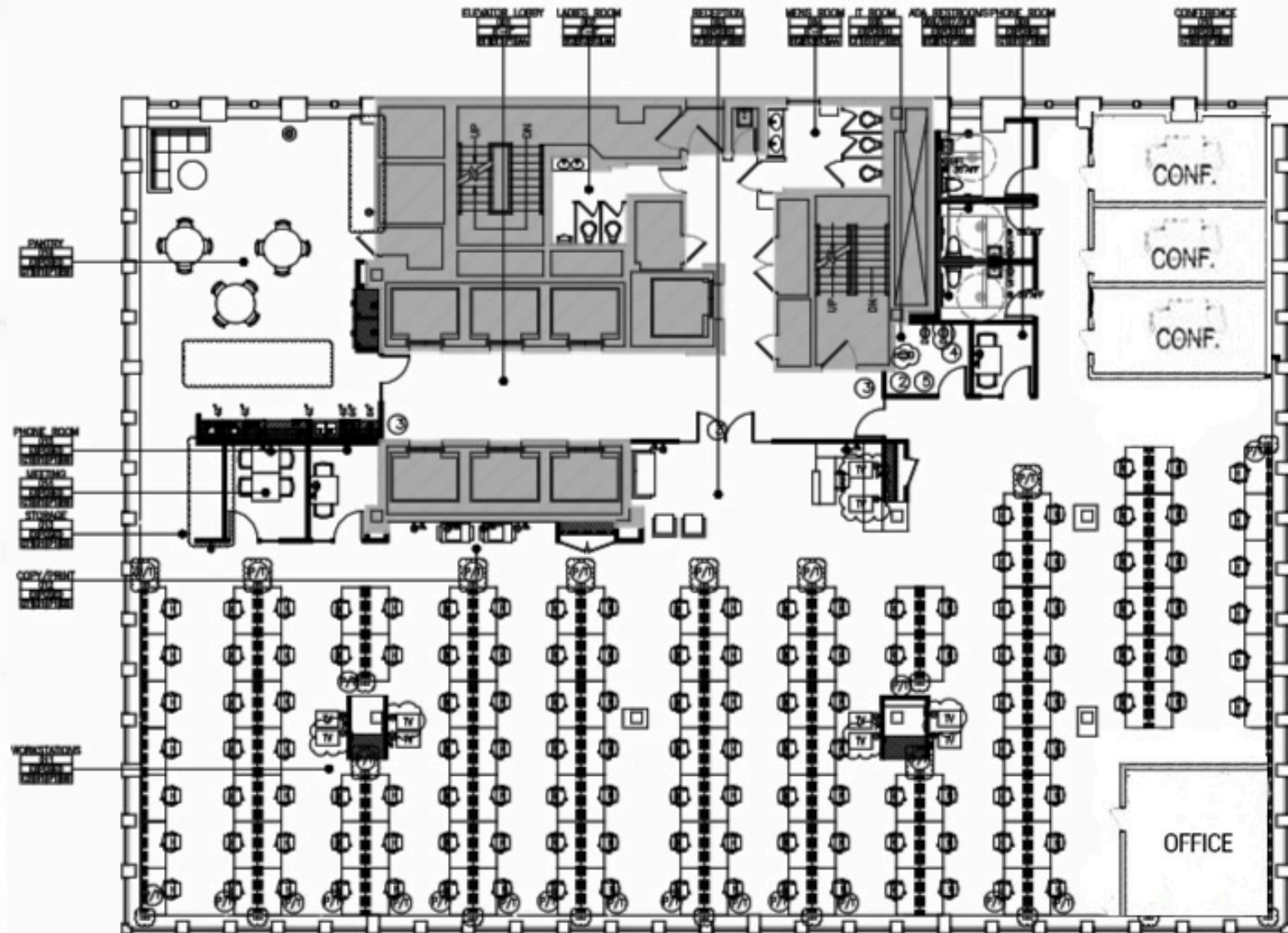
- High-end built creative space with 2 conference rooms, 7 meeting rooms, 3 offices, 2 lounge areas, open area for 75+ people, a large pantry/café, and 5 phone booths
- Fully furnished and wired



FLOOR PLAN

Entire 25th Floor - 13,500 RSF - Proposed Furniture Plan

- High-end built space with 3 conference rooms, 3 offices/meeting rooms, open seating for 130 people and a large pantry/cafe
- Floor is not currently furnished





1407

BROADWAY

