

485

LEX

PARTIAL FLOOR SUBLEASE OF 14,919 RSF







FEATURES

- Term: Through 9/30/2028
- Beautifully built two year old plug and play installation with great light and views
- Perfect for any professional service company seeking a partial floor presence
- All furniture can be made available
- Great Midtown Location
- Proximity to Grand Central
- Direct lobby access to Blackwell's restaurant and Duane Reade. Other retail amenities include: Soul Cycle & Gregory's Coffee
- Two building entrances - Lexington and Third Avenue access
- Two-level, in building 100 car garage
- In building bike storage







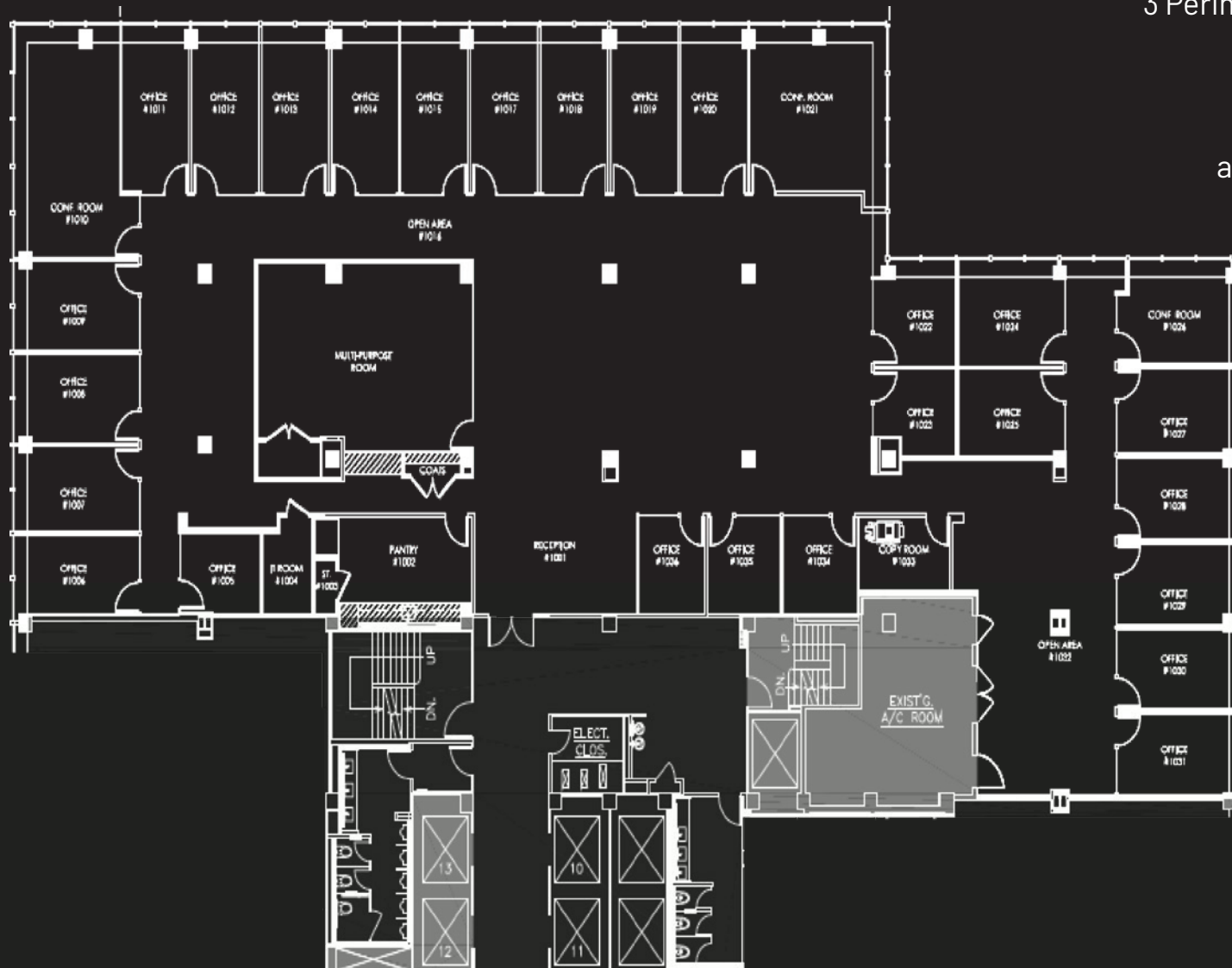


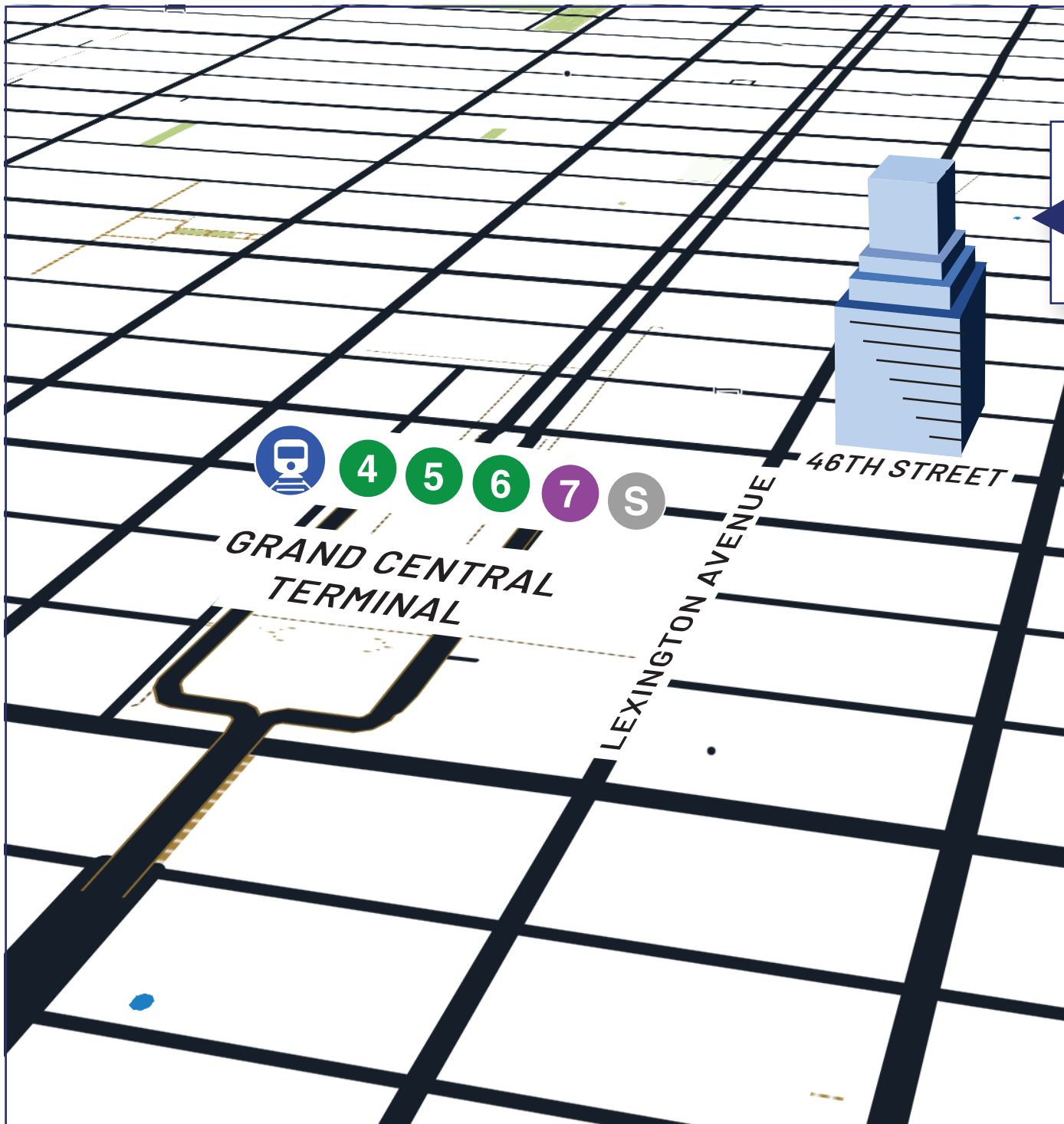


10TH FLOOR

14,919 RSF

- 21 Perimeter Offices
- 3 Perimeter Conference Rooms
- 5 Interior Offices
- 1 Multipurpose Room
accommodates 52 people
- 12 Support Seats
- 1 Large Pantry





485 LEX

Steps away from the northern access to Grand Central Terminal, 485 Lexington provides unparalleled access to a vast array of subway, bus, Metro-North, and train lines.





