

# 1251 AVENUE OF AMERICAS

SUBLEASE OPPORTUNITY



**PARTIAL 35TH FLOOR**  
**14,015 RSF**

**TERM:** Flexible

**POSSESSION:** Immediate

**RENT:** Upon Request

## SPACE FEATURES

- Brand new, never occupied, & fully furnished with Sit/Stand Desks
- Double door entryway directly off Elevator
- Views facing North and East over Rock Center and St. Patrick's
- 26 Windowed Offices, 10 Interior Offices & 2 Windowed Conference Rooms
- Full kitchen



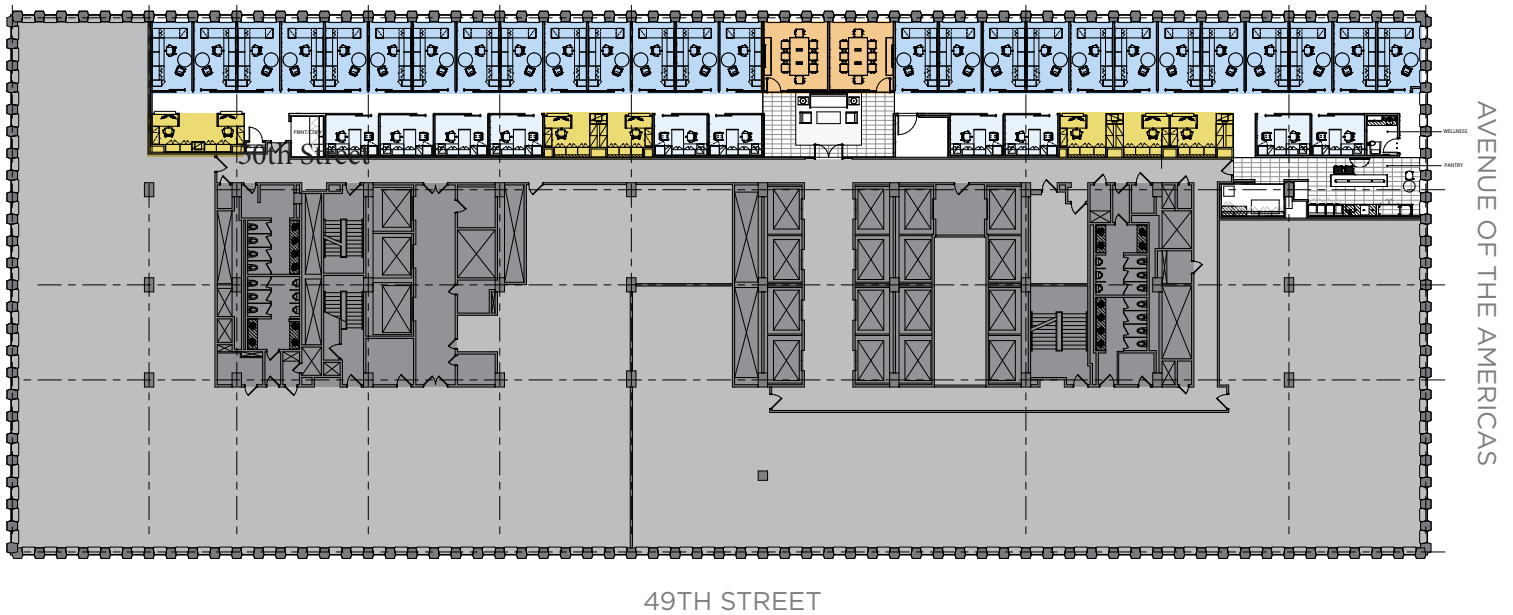
# FLOOR PLAN

1251 AVENUE OF THE AMERICAS



## PARTIAL 35TH FLOOR - 14,015 RSF

50TH STREET



49TH STREET

AVENUE OF THE AMERICAS

- Perimeter Office (Atty.)
- Interior Office (Atty.)
- Support Office
- Secretary
- Conference