

PLUG AND PLAY / 15K AT 7 PENN PLAZA



Space Profile

Size: **14,855 SF**

Floor(s): **Partial 6th**

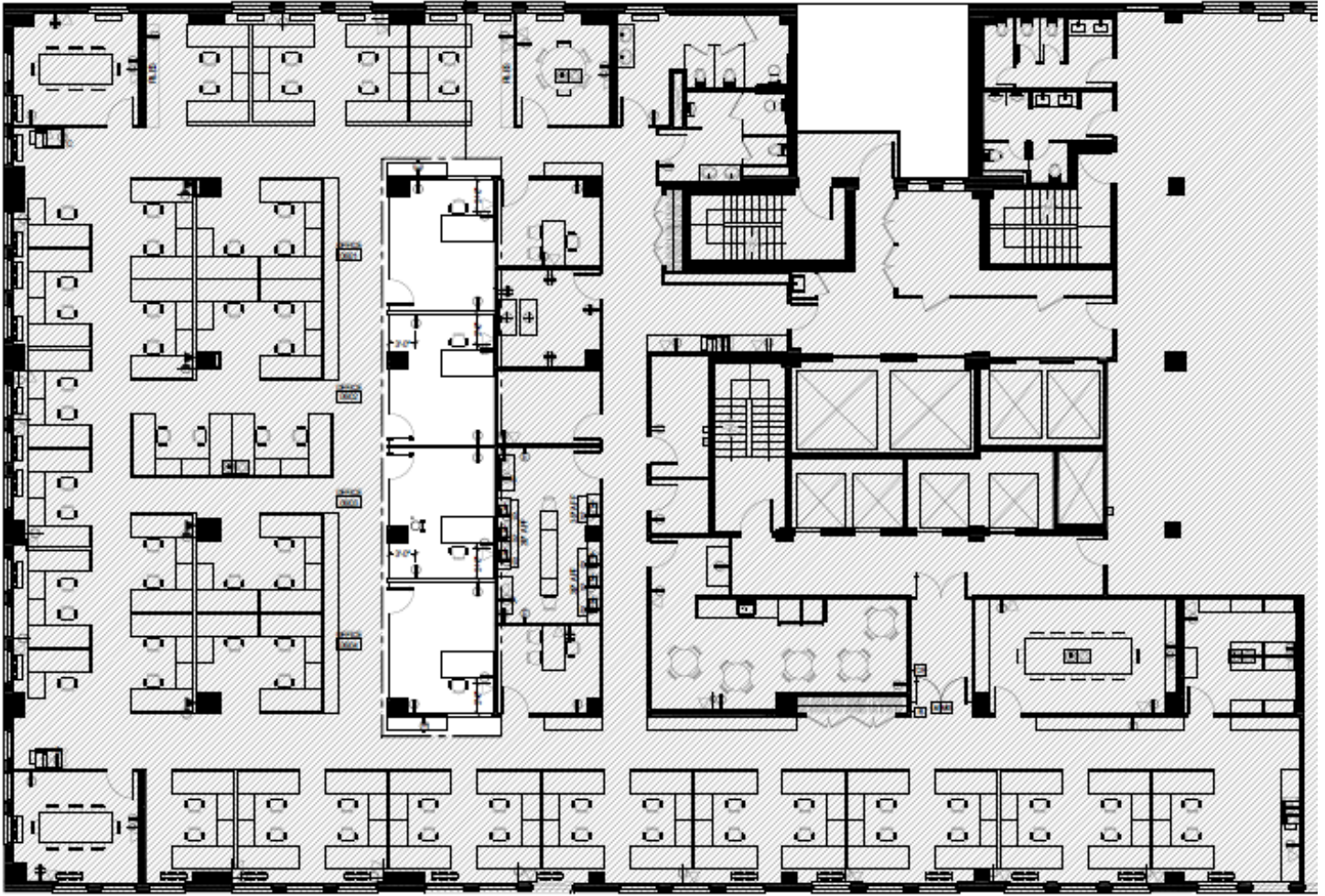
Asking Rent: **Upon Request**

Possession: **Immediate**

Term: **Through July 31, 2027**

Key Highlights

- Built / Furnished / Wired space steps from Penn Station
- Double glass door entry right off elevator
- All FF&E can be included
- Large pantry
- Private bathrooms



Space Overview

- 74** workstations
- 10** private offices
- 1** breakout room
- 4** conference rooms

SUBLEASE 7 Penn Plaza, New York, NY 10001



SUBLEASE 7 Penn Plaza, New York, NY 10001

