

667

MADISON AVENUE

**AN OFFICE EXPERIENCE
LIKE NO OTHER.**



Private Terrace

DESIGN

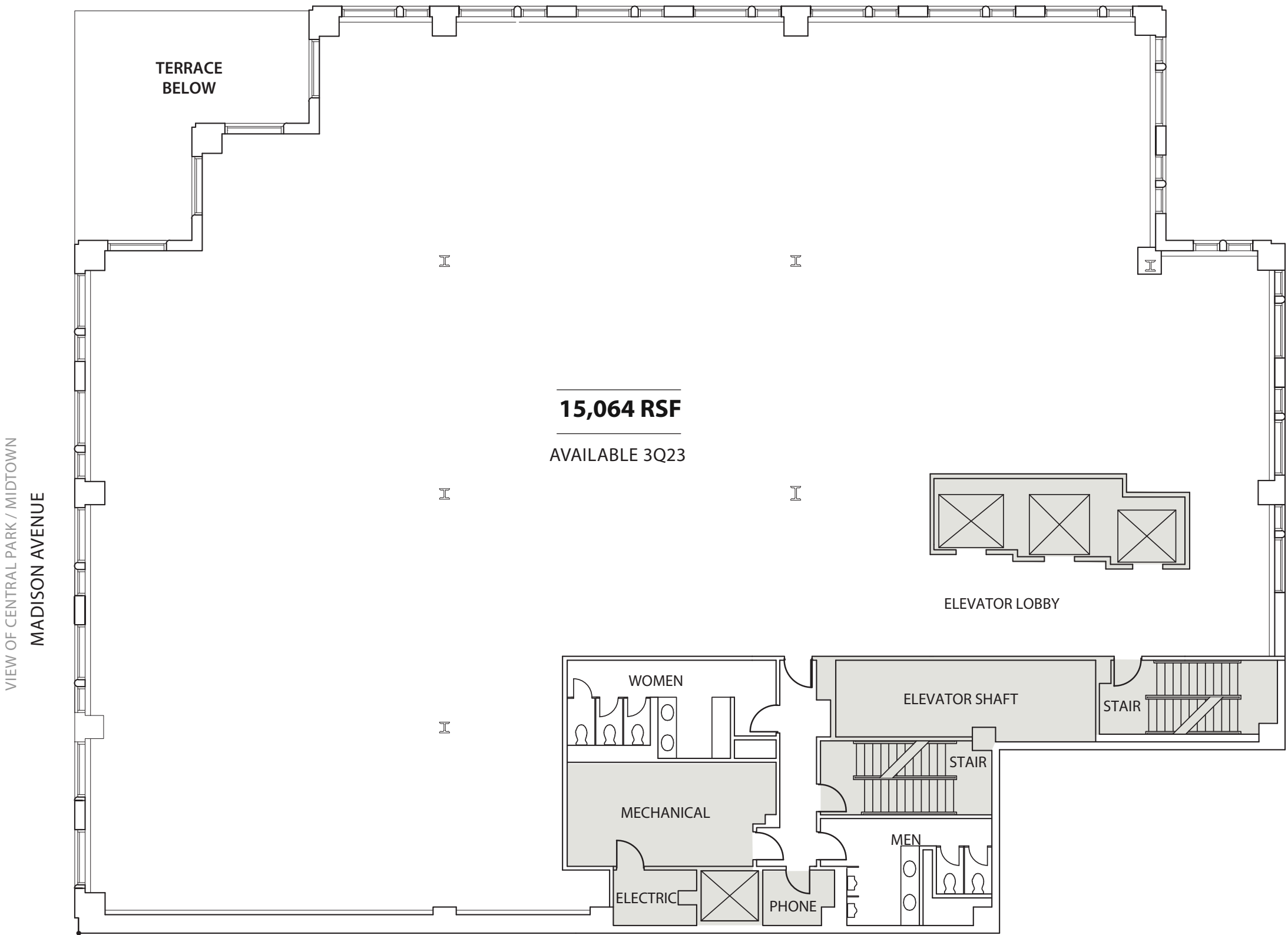
Inspired by grand architectural elements in the Saint-Germain-des-Prés district of Paris, 667 Madison's granite-clad exterior office building stands at 25 stories with 273,114 RSF.

Bespoke interiors have been curated to feature elements of a Manhattan residence rather than of a standard office space. This vision has been realized through expansive floor-to-ceiling windows and ceiling heights of 14', as well as the use of materials such as sheetrock and finishes like automatic shades and others that are found in New York's very best residential buildings.

667 Madison's office interior finishes reflect ownership's vision to offer its tenants a standard that is modern, yet timeless, and with the very best in quality that is available in the marketplace today. These standards include wide-planked wood floors, floor-to-ceiling glass office fronts, generous use of sheetrock, and related finishes that ensure office interiors are both highly functional, yet residential in the ambiance.

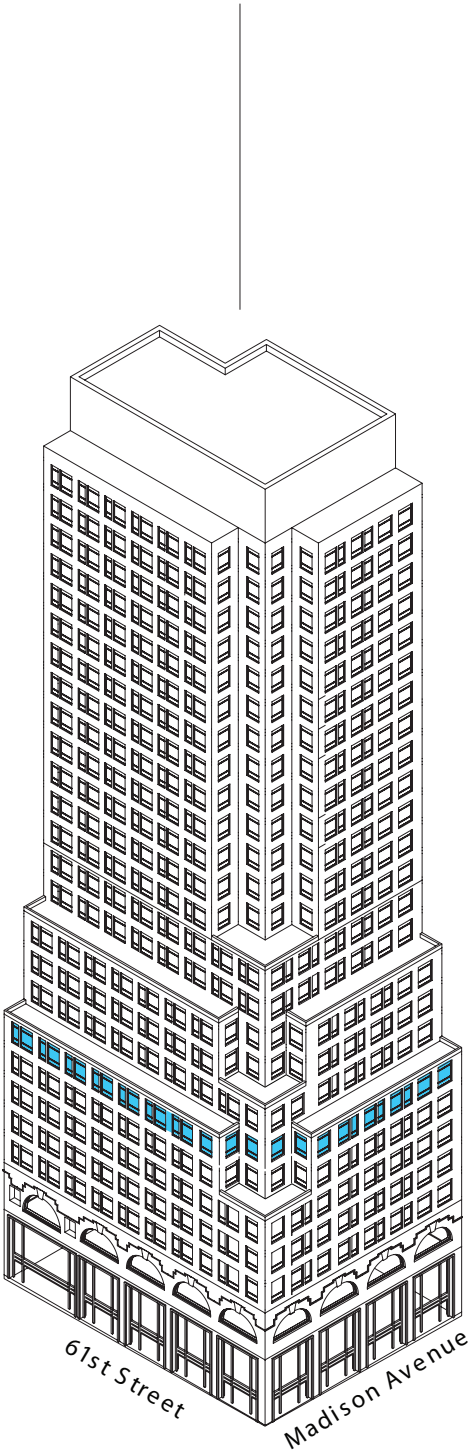
FLOOR 7

VIEW OF CENTRAL PARK / UPPER EAST SIDE
E. 61ST STREET



AVAILABLE 3Q23

7th FLOOR
15,064 RSF









LOBBY

Bartholdi's original maquette of Lady Liberty greets 667 Madison visitors upon arrival. Gilbert Stewart's original portrait of George Washington—one of only two portraits the first President ever sat for—hangs behind the reception desk, staffed by the city's best and most committed operations team.

“ *The west wall of our lobby was originally designed to display a fantastic piece of art.*

Yet I could never find the perfect piece, given the size and volume of the space and my commitment to do something really different. — Leonard Stern ”



The Munro-Lenox Portrait of George Washington



LOCATION

Located on the northeast corner of 61st Street and Madison Avenue, 667 Madison sits at the intersection of two of the city’s most prominent neighborhoods and is one block from Central Park. The asset’s location is unique in that the area’s traffic and streetscape feel more like a residential neighborhood rather than a hectic commercial district. The city’s most important shops, restaurants, cultural experiences, and hotels are within walking distance.



BARS

1. Bar Seine
2. Club Macanudo
3. Harry’s New York Bar
4. Jacques
5. The Bar Room
6. The Champagne Bar
7. The Regency Bar & Grill
8. The Whitby Bar
9. Two E Bar/Lounge
10. Ty’s Bar



HOTELS

1. 1 Hotel Central Park
2. Four Seasons Hotel
3. Hôtel Plaza Athénée
4. Essex House New York
5. Loews Regency New York
6. Park Lane Hotel
7. The Lowell Hotel
8. The Pierre, A Taj Hotel
9. The Plaza
10. The Ritz-Carlton
11. The Sherry-Netherland
12. Trump Tower



CULTURE

1. Asia Society and Museum
2. Central Park Zoo
3. Galleries Bartoux
4. Gapstow Bridge
5. General William Tecumseh Sherman Monument
6. Park Avenue Armory
7. Rockefeller Center
8. SM Fine Art Gallery
9. Society of Illustrators
10. The Frick Collection
11. The Museum of Modern Art
12. Top of The Rock
13. Carnegie Hall



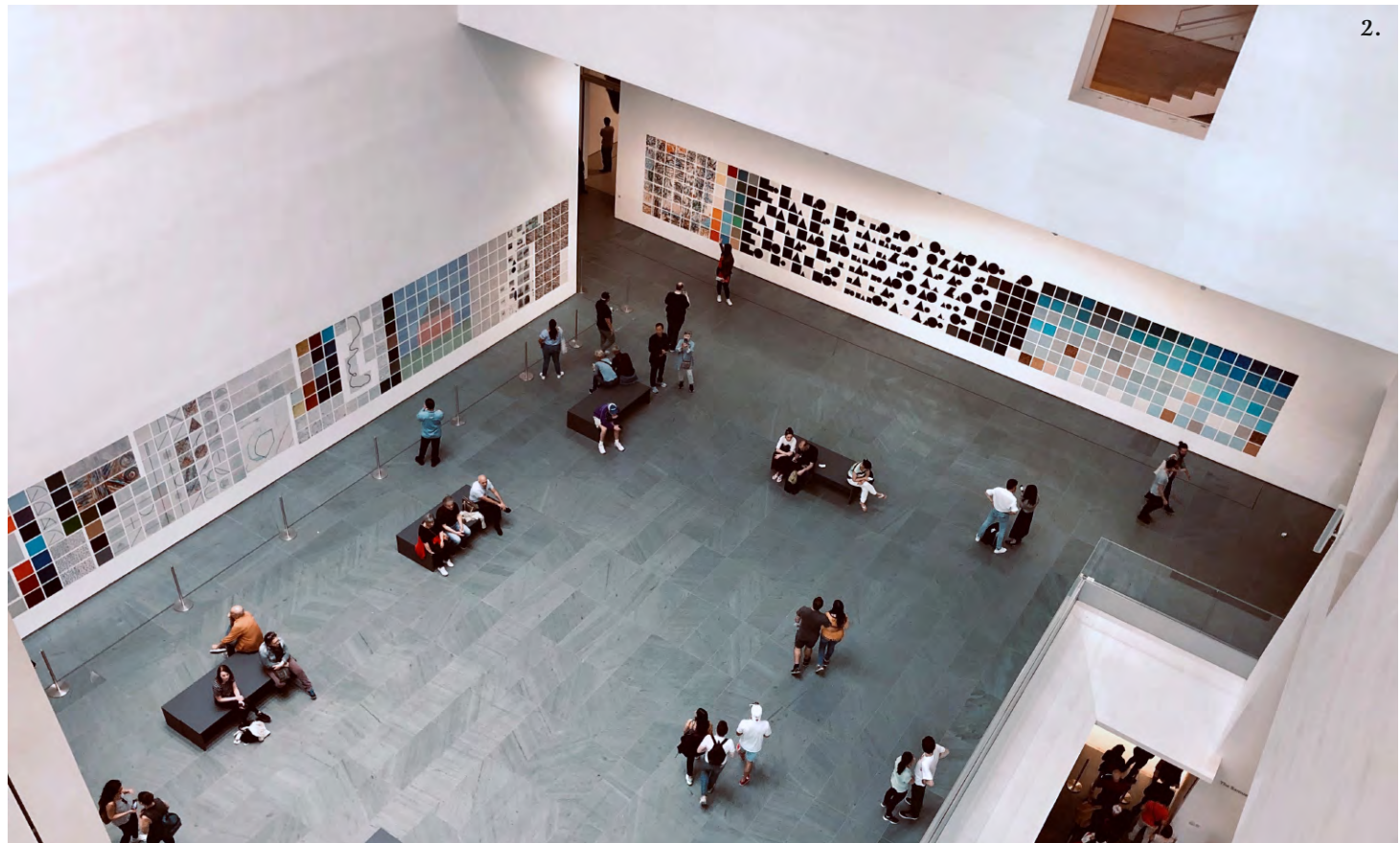
RESTAURANTS

1. Amaranth
2. Armani/Ristorante
3. Avra Madison Estiatorio
4. Daniel
5. Fleming by Le Bilboquet
6. Harry Cipriani
7. La Goulue
8. LAVO Italian Restaurant
9. Le Bilboquet
10. Majorelle
11. Nobu Fifty Seven
12. Philippe Chow
13. Serafina Osteria



RETAIL

1. Apple
2. Balenciaga
3. Balmain
4. Bergdorf Goodman
5. Berluti
6. Bottega Veneta
7. Brioni
8. Brunello Cucinelli
9. Burberry
10. CELINE
11. CHANEL
12. Dior
13. Fendi
14. Giorgio Armani
15. Graff
16. Gucci
17. Hermès Mens
18. Jimmy Choo
19. Louis Vuitton
20. Maison Goyard
21. Marc Jacobs
22. Missoni
23. Moncler
24. Morgenthal Fredrics
25. Saint Laurent
26. Schutz
27. Tiffany & Co.
28. Tod’s
29. Tom Ford



1. Gapstow Bridge, Central Park
 2. Museum of Modern Art
 3. Gucci, Fifth Avenue
 4. Central Park



1. Gapstow Bridge, Central Park
2. Central Park lawn
3. The Guggenheim
4. Metropolitan Museum of Art

