

# FULL FLOOR MIDTOWN



## Space Profile

Size: **17,972 SF**

Floor: **Entire 20th**

Rate: **Upon request**

Availability: **Immediate**

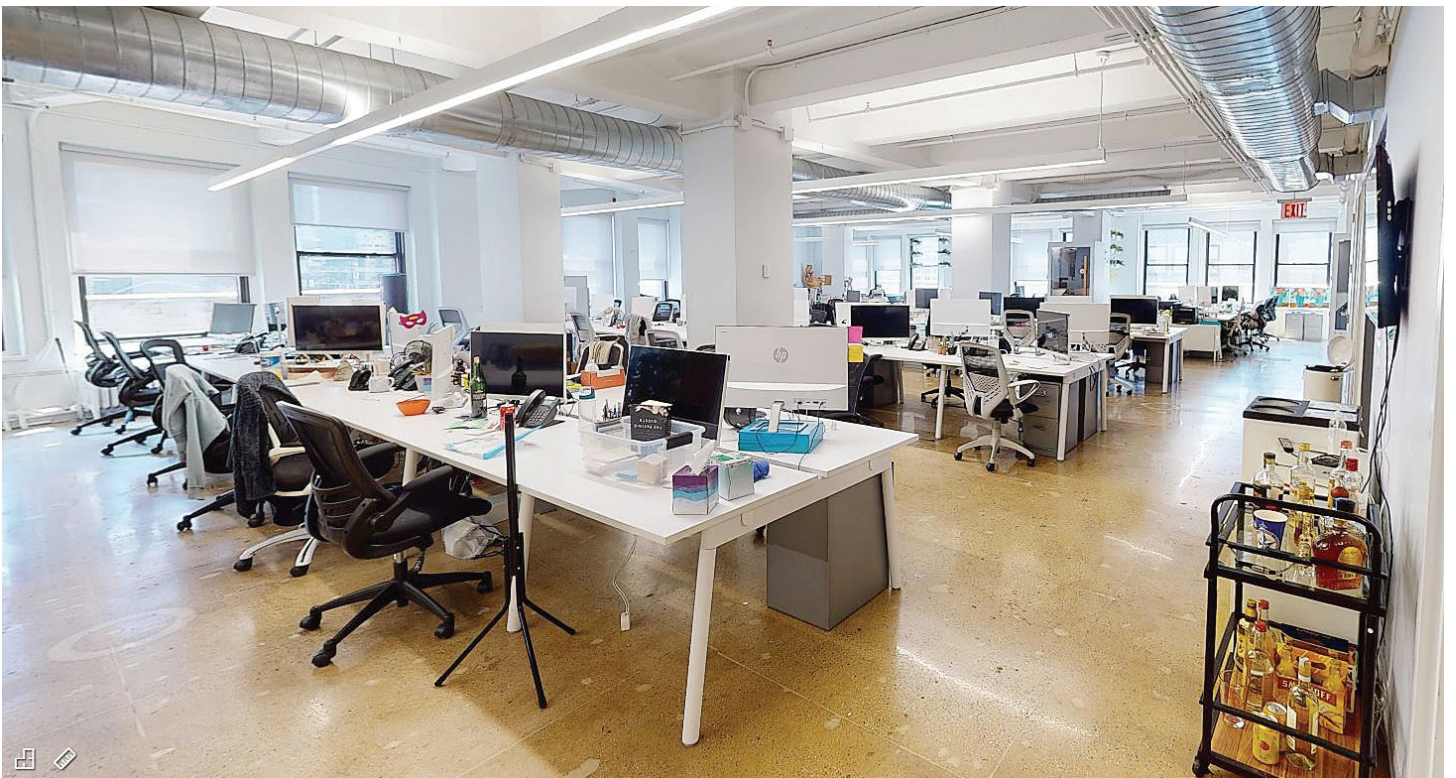
Term: **October 2026 (shorter term to be considered)**

## Key Highlights

- Beautiful turn-key / fully furnished sublease.
- Glass offices, polished concrete and large eat-in kitchen.
- Impressive 4 sides of lights.



1375 Broadway, New York, NY 10018 | Penn Plaza/Garment Submarket

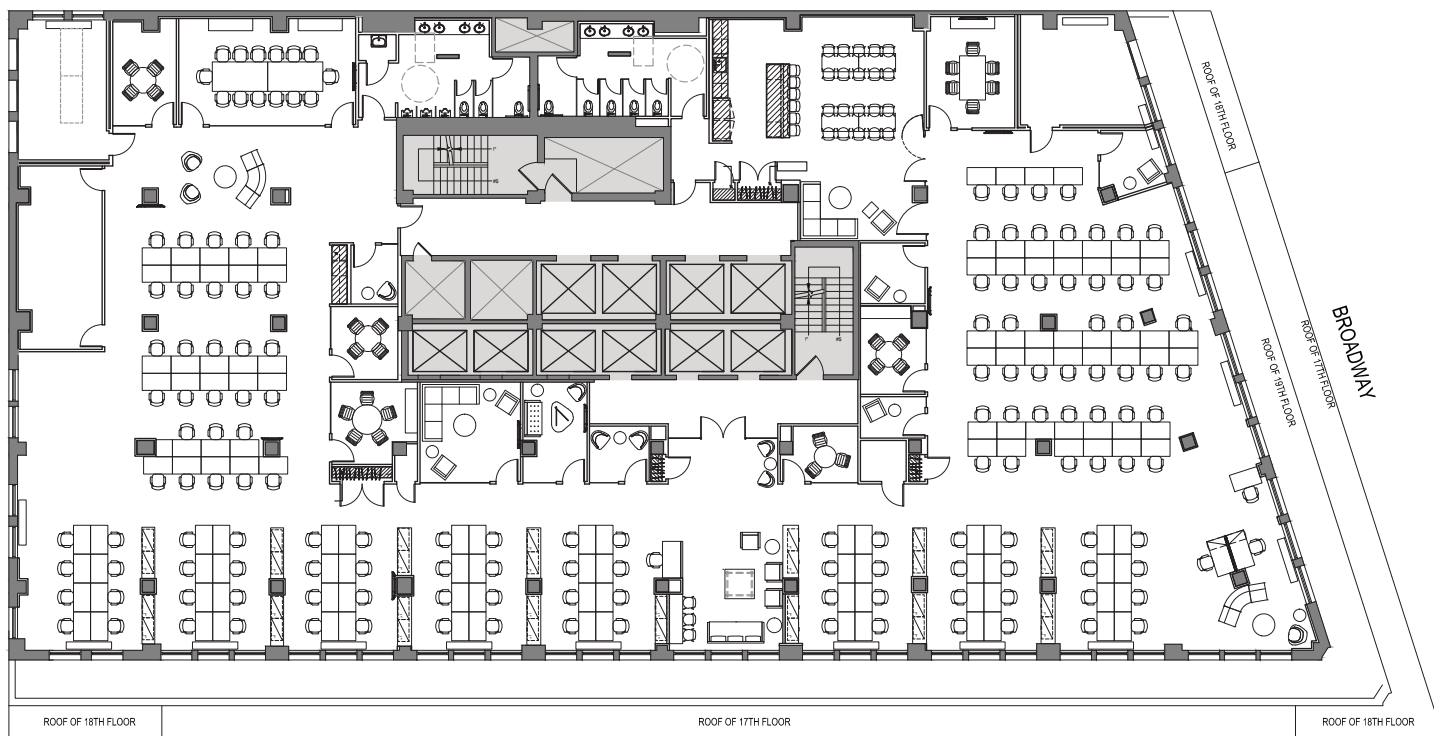




1375 Broadway, New York, NY 10018 | Penn Plaza/Garment Submarket







## Space Overview

**12** meeting rooms

**1** large studio/team room

**2** conference rooms

Room for 130+ workstations

