



# **330 MADISON AVE 19TH FLOOR**

**GRAND CENTRAL AREA**  
BETWEEN E 42ND & E 43RD ST

FULL-FLOOR OFFICE SUBLET  
WITH MASSIVE PRIVATE TERRACE

19,465 INTERIOR Ft<sup>2</sup>  
3,000 EXTERIOR Ft<sup>2</sup>

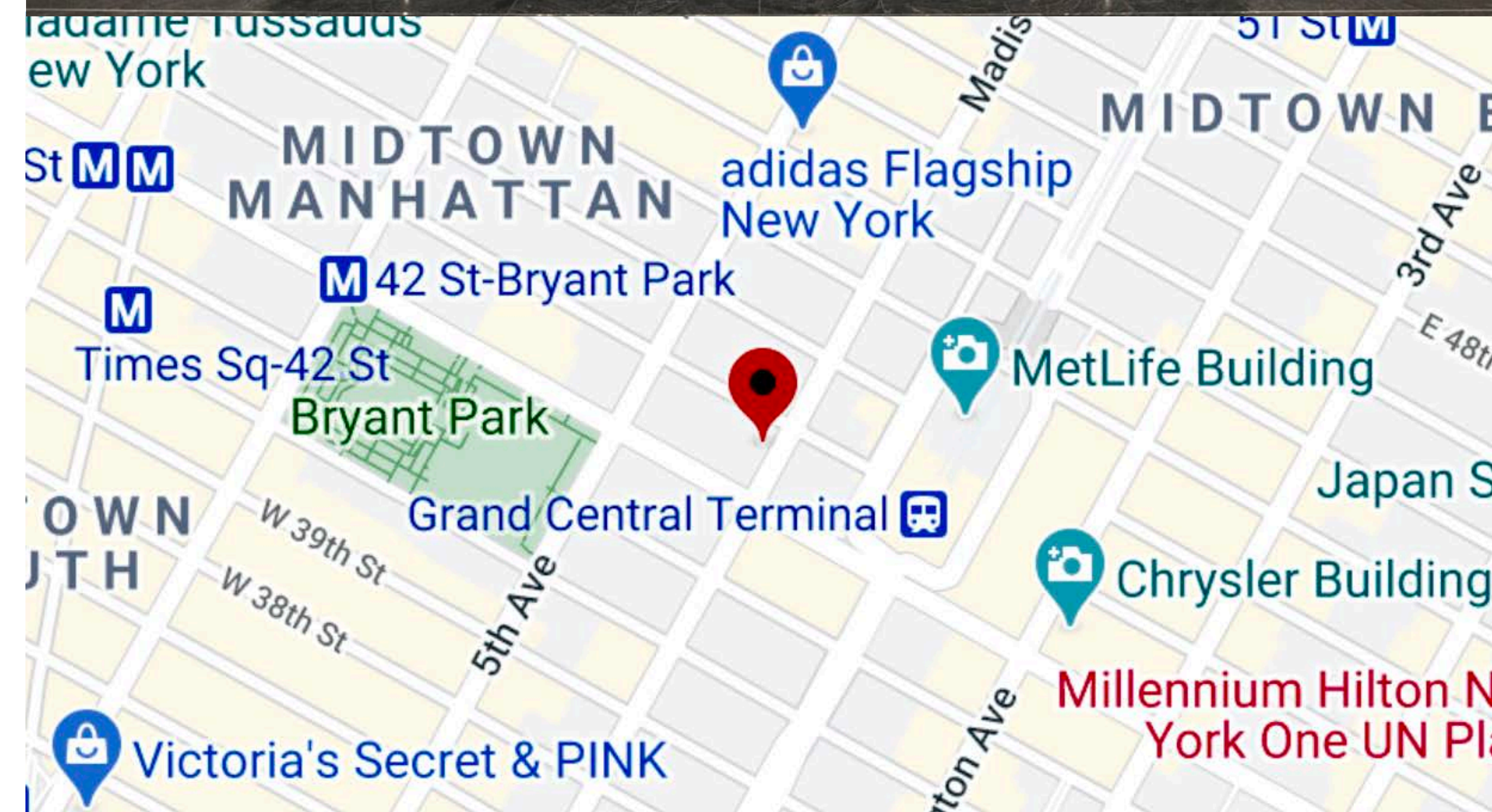


## SPACE FEATURES

- \* 36 OFFICES
- \* 2 CONFERENCE ROOMS
- \* PANTRY
- \* SERVER ROOM
- \* LOGISTICS/STORAGE ROOM
- \* FURNITURE NEGOTIABLE
- \* AVAILABLE THROUGH APRIL 2028
- \* PRICE AVAILABLE UPON REQUEST

## BUILDING FEATURES

- \* CLASS A
- \* 16 ELEVATORS
- \* 24/7 ACCESS & SECURITY
- \* HOSPITAL GRADE AIR FILTERS
- \* BACKUP GENERATOR SYSTEM
- \* DAUL ENTRY POINTS
- \* BIKE STORAGE ROOM

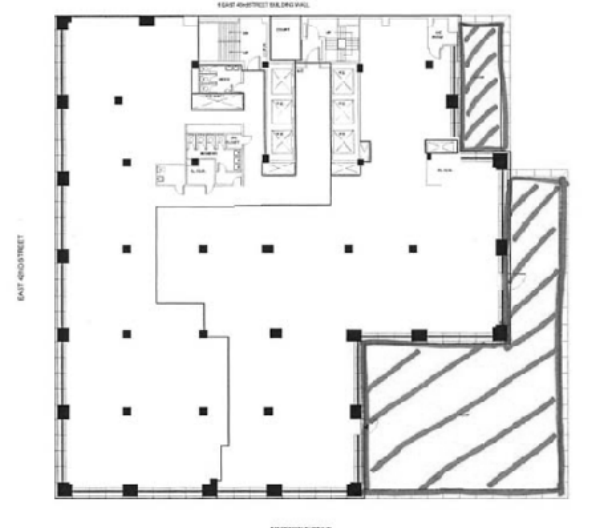
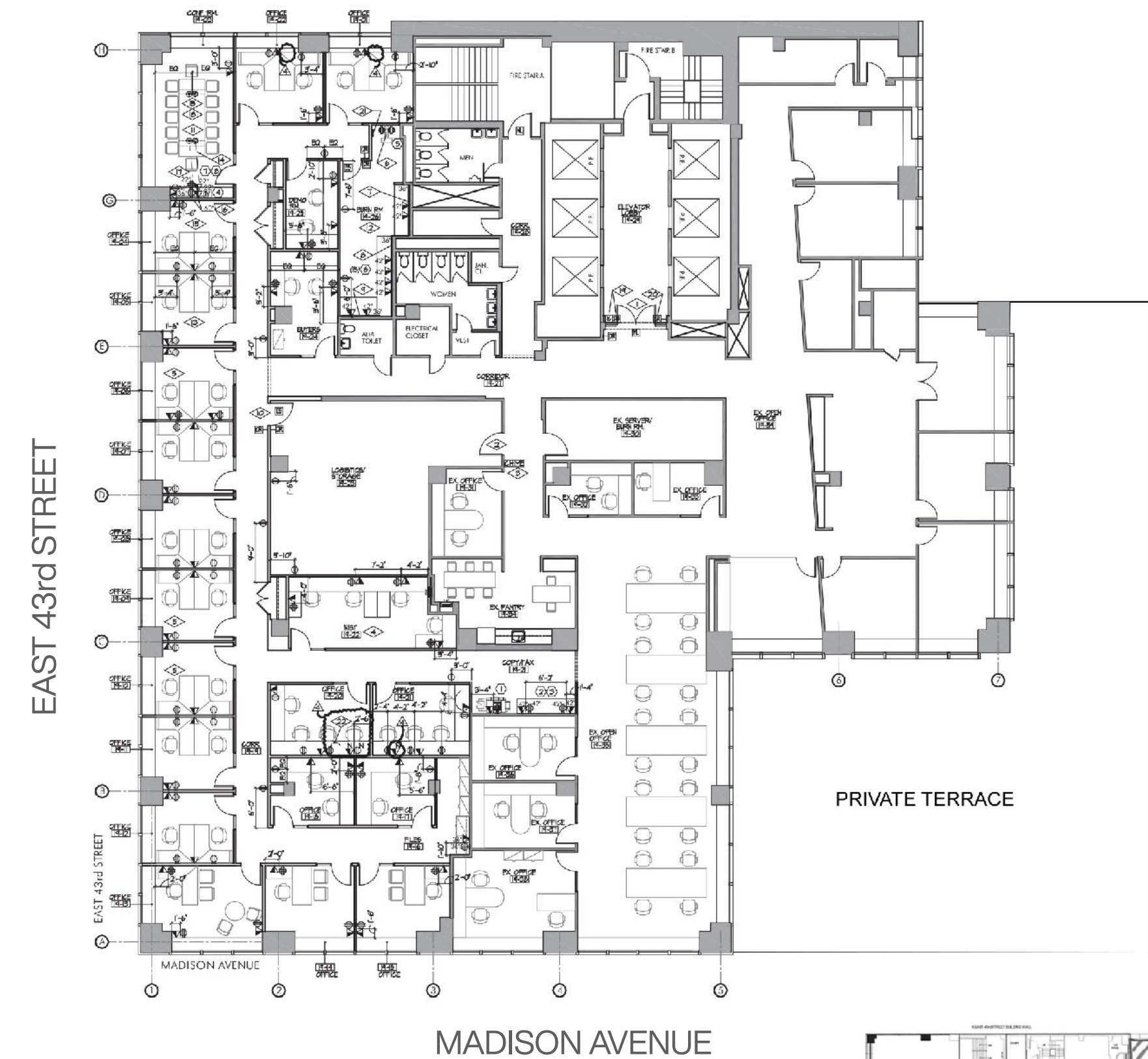




# 330 MADISON AVE 19TH FLOOR - BETWEEN E 42ND & E 43RD ST



## CURRENT LAYOUT ENTIRE 19TH FLOOR - 19,465 SQUARE FEET





**330 MADISON AVE 19TH FLOOR - BETWEEN E 42ND & E 43RD ST**







BULLPEN



PRIVATE TERRACE, ACCESSIBLE FROM BULLPEN







PANTRY



RECEPTION



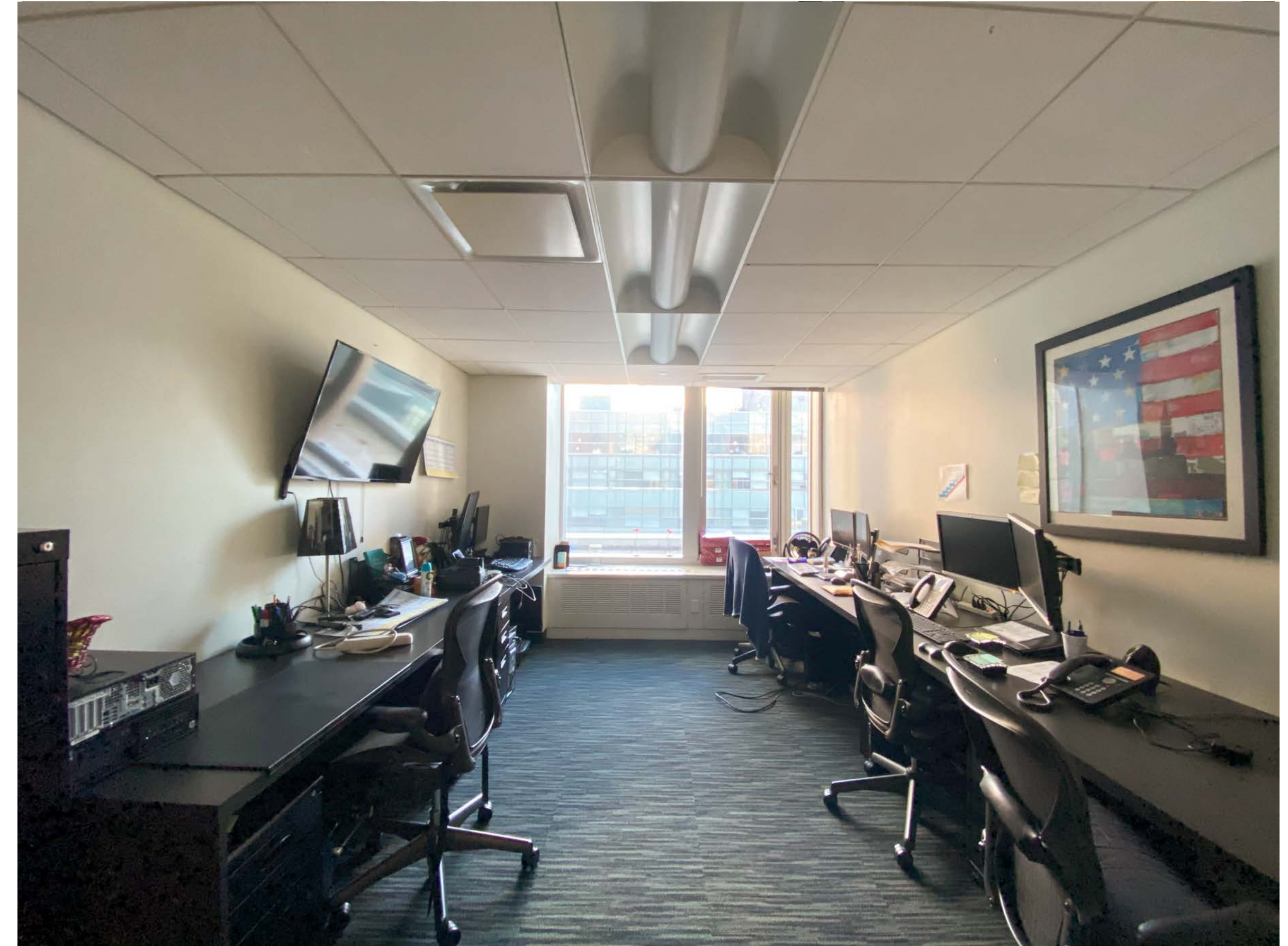




EXECUTIVE OFFICES







SHARED OFFICES







BATHROOM AND SECOND. CONFERENCE





# ABOUT 330 MADISON AVE

330 Madison Avenue is a class A, institutional quality building located in the Grand Central submarket of NYC. The building is accessible to tenants 24/7 by dual entry points on Madison Avenue and 43rd St. The lobby is attended by full-time security. The building was fully renovated in 2011. The renovations included a backup generator system and LEED Platinum standard, hospital grade MERV 14 rated air filters. Telecommunication carriers within the building include Verizon, Cogent, MCI/Verizon Business, Time Warner Cable, Pilot Fiber, Spectrum, Light Path, Light Tower, Level 3 and Crown Castle. There is also a bike room.

