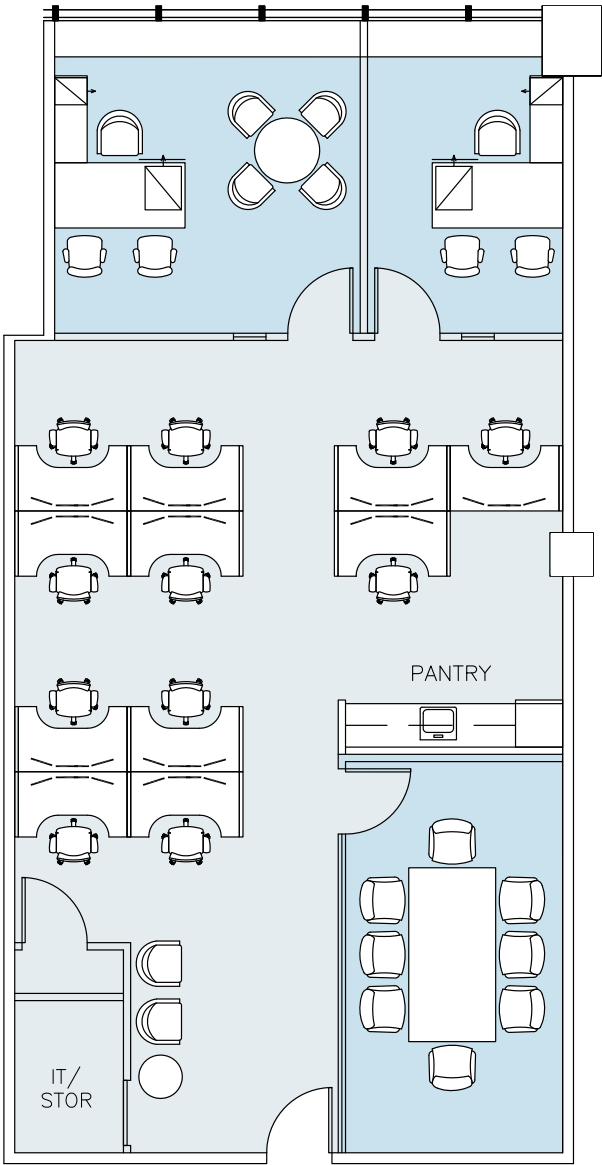


# 555W57



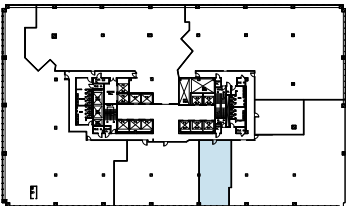






WEST 57TH STREET

FLOOR KEY	
Total Offices	2
Conference Rooms	1
Workstations	11
Total Personnel	13



<b>Owner</b>	Green W 57th St LLC		<b>Elevators</b>	5 high- rise passenger elevators, 3,500 lbs capacity each; 5 low-rise passenger elevators, 3,500 lbs capacity each; 2 service elevators, 4,500 lbs capacity each; 1 service elevator, 10,000 lbs capacity; 1 tenant elevator, 2,500 lbs capacity; 2 tenant elevators, 3,500 lbs capacity each; 1 parking garage hydro elevator, 2,500 lbs capacity.
<b>Year Built</b>	1969			
<b>Location</b>	Corner of 57th Street and 11th Avenue			
<b>Architects</b>	Edgers & Higgins			
<b>Building Size</b>	1,021,893 rsf		<b>Freight Elevators</b>	3 freight elevators: (2) bldg: Loading dock-20th FL (1) tenant truck elevator: B3-4th FL
<b>Floor Sizes</b>	2nd - 4th	43,400 rsf	<b>Electric Capacity</b>	Four (4) 4,000 amp, 480 volt switchboards each; 16,000 amps total service to the building.
	5th - 13th	51,000- 55,000 rsf	<b>HVAC</b>	Central plant with two (2) 1,300 ton centrifugal chillers & one (1) 800 ton electric drive chiller.
	14th - 16th	3,000- 57,000 rsf	<b>Life Safety</b>	Addressable Class E fire alarm system; self- contained emergency generator for Life Safety systems; fully sprinklered
	17 - 19th	56,000 rsf	<b>Transportation</b>	Walking distance to subways at Columbus Circle (including the A, B, C, D & 1); and M10, M20, M31, M57 & M104 buses; Convenient access to the West Side Highway
<b>Building Construction</b>	<p>Entries on the 57th street and 58th streets featuring picture window glass with a large revolving door flanked on each side by handicapped accessible swing doors.</p> <p>The lobby itself is finished in marble with a terrazzo tile floor. Conventional steel frame of beams and columns with reinforced concrete floor slabs.</p> <p>Floor layout center core</p> <p>Aluminum and glass</p>		<b>Telecom</b>	Spectrum, Crown Castle/Light Tower, Cablevision Lightpath, Verizon
<b>Ceiling Height</b>	Slab to slab 13'			
<b>Windows</b>	39.5" to 54.25"			
<b>Column Spacing</b>	38' center to center of the columns			
<b>Security</b>	<p>24/7- uniformed security guards;</p> <p>Closed Circuit Television (CCTV) monitoring at all entrance/exit points</p>			

