

216

LAFAYETTE STREET
BETWEEN SPRING &
BROOME STREETS

SOHO
MANHATTAN

PLANTSHED

PLANTSHED 🌿 FLOWERS | PLANTS | COFFEE

216 LAFAYETTE ST.

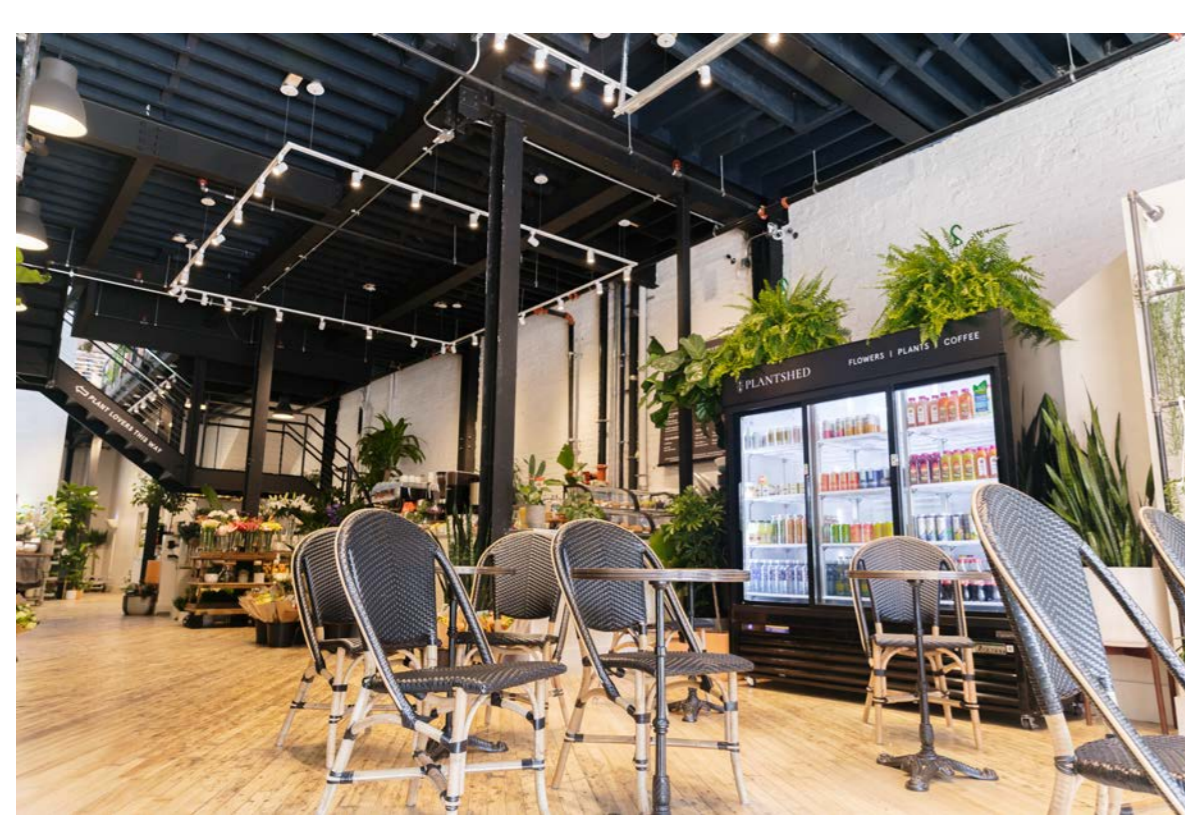
PLANTSHED

Your local NYC
plant + flower shop

MORINI

MORINI

216
LAFAYETTE STREET
BETWEEN SPRING & BROOME STREETS

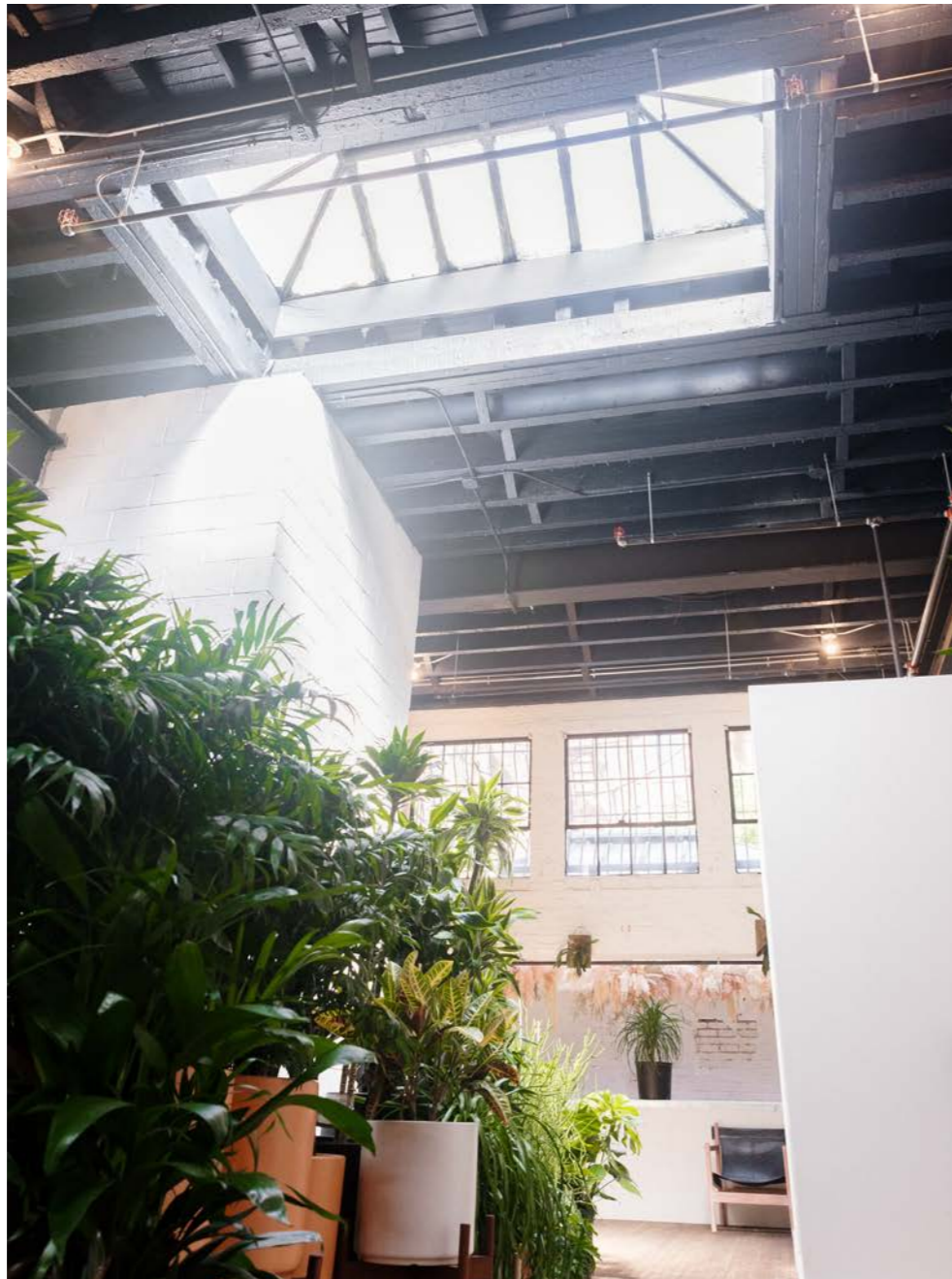


RARE FULL BUILDING OPPORTUNITY IN THE HEART OF SOHO

FLOOR-TO-CEILING RETRACTABLE DOORS ON BOTH GROUND AND SECOND FLOORS

216
LAFAYETTE STREET
BETWEEN SPRING & BROOME STREETS





ABUNDANT LIGHT THROUGHOUT

FLOOR PLANS

216

LAFAYETTE STREET
BETWEEN SPRING & BROOME STREETS

GROUND FLOOR
2,432 SF

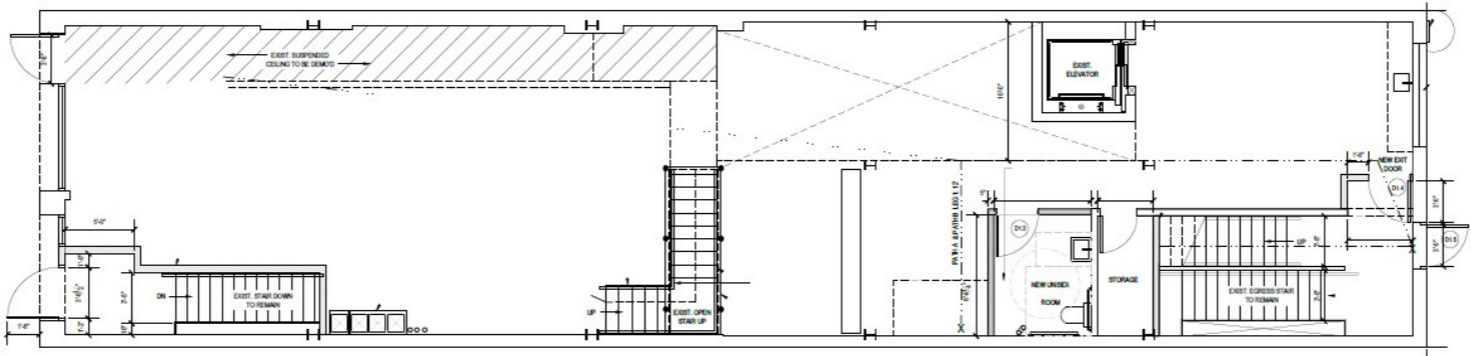
LOWER LEVEL
2,521 SF

SECOND FLOOR
2,146 SF

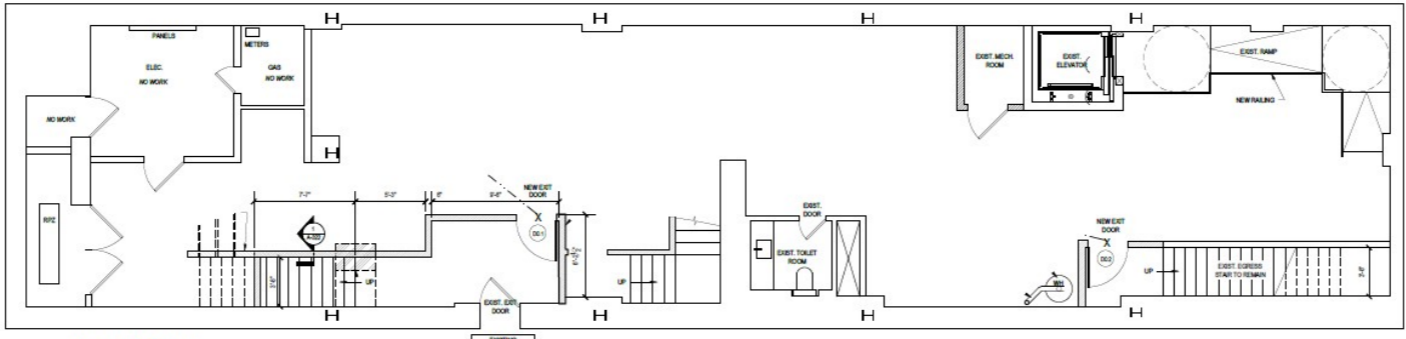
CEILING HEIGHTS
Ground Floor: 15 FT 9 IN
Lower Level: 8 FT 2 IN
Second Floor: 16 FT 2 IN

FRONTAGE
20 FT on Lafayette Street

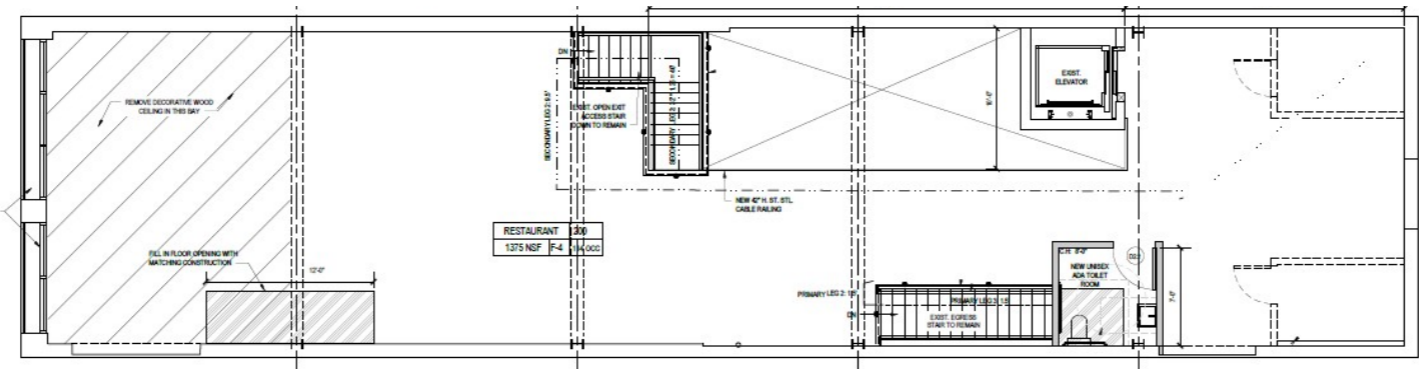
POSSESSION
Immediate



GROUND FLOOR



LOWER LEVEL



SECOND FLOOR

Floor plans and square footage are approximate and need to be confirmed by an architect.

HIGHLIGHTS

216
LAFAYETTE STREET
BETWEEN SPRING & BROOME STREETS

Currently PlantShed.

Newly redeveloped full-building flagship retail opportunity perfectly situated at the intersection of Soho and Nolita.

Ground and second floors feature floor-to-ceiling glass retractable doors that provide a one of a kind indoor/outdoor experience.

Multiple skylights in place bringing in an abundance of natural light.

Internal staircase in place along with elevator servicing all floors.

Lower level is selling.

Billboard opportunity available.

All uses considered.



MAP

NEARBY PUBLIC TRANSIT

B D F M N R W 4 6

SELECT NEARBY
RETAIL TENANTS

- Jack’s Wife Freda
- Osteria Morini
- Cafe Select
- BoCaphe
- Officine Generale
- 19 Cleveland
- La Esquina
- Baked By Melissa
- Chipotle
- Allbirds
- Mitchell Gold + Bob Williams
- Duane Reade
- Blank Street Coffee
- Beatnic
- Naadam
- Maison Kitsune
- Lively
- StockX

