

# 655 THIRD AVENUE

**PARTIAL FLOOR 26**  
2,167 SF



BUILDING EXTERIOR



BUILDING LOBBY

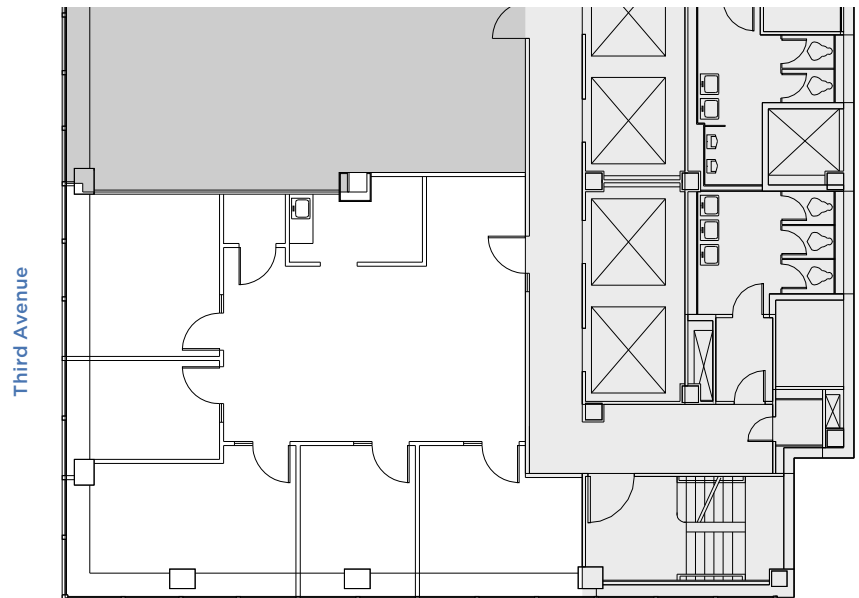
## AVAILABILITY

- Built Space
- Great Southerly Views

## PROPERTY FEATURES

- One block from Grand Central Terminal
- Renovated lobby includes a new concierge desk and turnstiles
- Green roofs and exclusive outdoor terraces
- LEED Gold certification under LEED v4 Existing Buildings: Operations + Maintenance

## AS-BUILT PLAN



East 41<sup>st</sup> Street

