



# 450 SEVENTH AVENUE

## FULLY FURNISHED SUBLEASE

**PREMISES:**

450 Seventh Avenue  
Room 1409

**SIZE:**

2,319 RSF

**TERM:**

Sublease through 10/31/2026  
Direct Extension is Available

**RENT:**

Upon Request

**POSSESSION:**

Immediate

**SPACE FEATURES:**

Furnished office intensive small suite available with three sides of light available for sublease.

**BUILDING NOTES:**

Adjacent to Penn Station and located between Herald Square and Hudson Yards, 450 7th Avenue has recently undergone an 18 million dollar capital improvement project to upgrade all hallways and bathrooms as well as the lobby and elevator cabs.

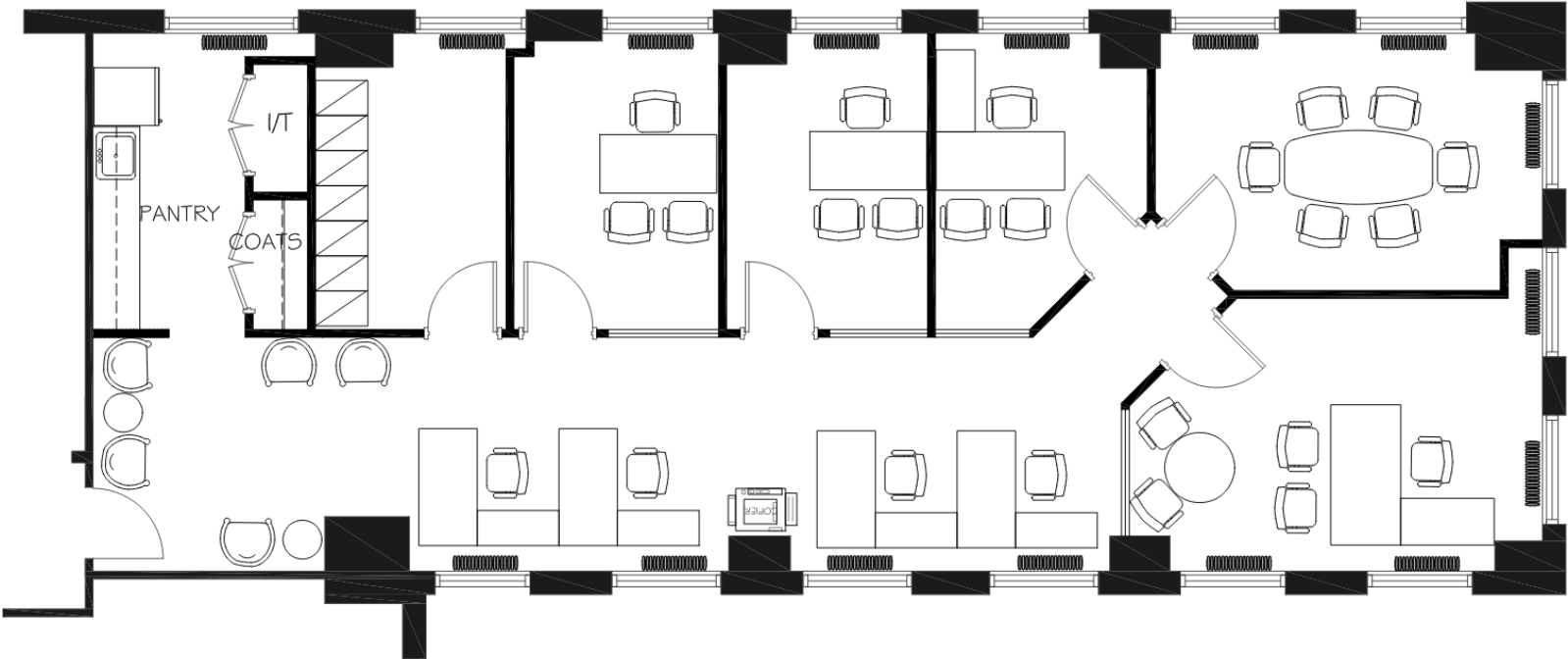
**TRANSPORTATION:**

**MTA**  
The Way To Go.



**Long Island Rail Road**





FURNITURE PLAN

# FLOORPLAN

## FLOOR 1409





