

366

FIFTH
AVENUE

**Brand New
Pre-Built Unit**
Suite 701
2,350 RSF





366

**FIFTH
AVENUE**

- ✓ **2,350 RSF**
- ✓ **Move-In Condition**
- ✓ **Furnished**
- ✓ **Flexible Term**
- ✓ **Expansion Options**

Space Features

- ✓ **2 Offices**
- ✓ **1 Conference Room**
- ✓ **Open Seating Area**
- ✓ **High End, Cafe-Style Wet Pantry**
- ✓ **Direct Elevator Presence**

Features brand new building standard finishes including hardwood floors, glass fronts and open ceilings. Large windows offer views overlooking Fifth Avenue and great natural light.



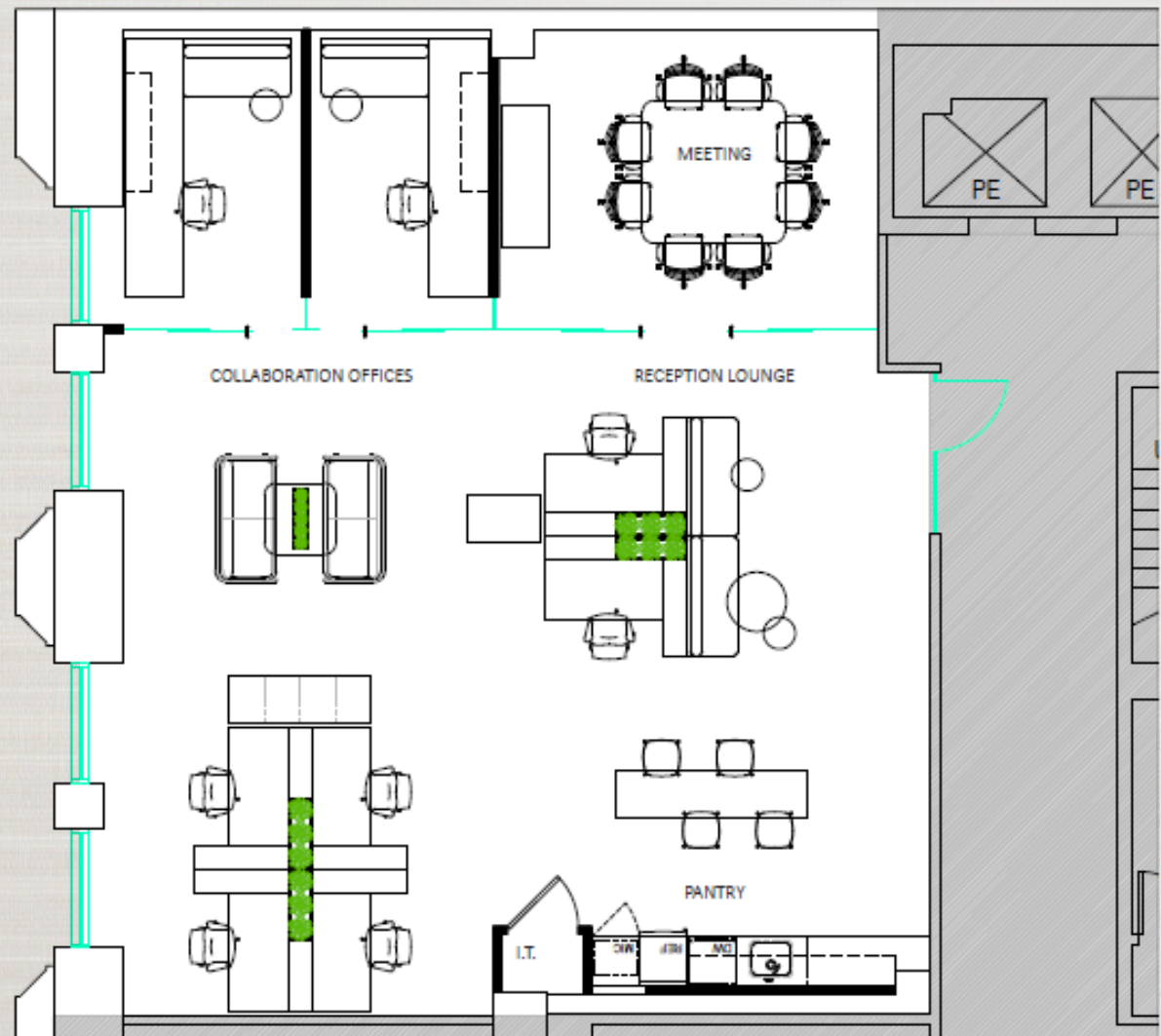


366

FIFTH
AVENUE

Suite 701

- ✓ 2 Offices
- ✓ 1 Conference Room
- ✓ Open Seating Area
- ✓ High End, Cafe-Style Wet Pantry
- ✓ Direct Elevator Presence



366 Fifth Avenue: Located Within Proximity to All Major Transportation Hubs

366
FIFTH
AVENUE

