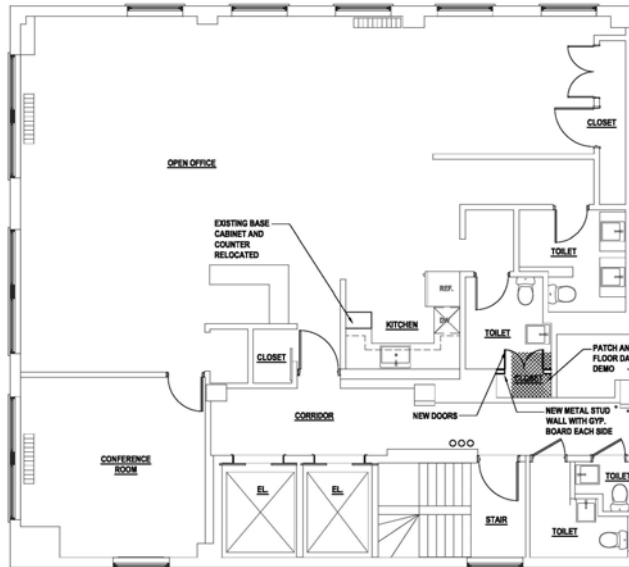


The Best of Madison Square Park

15 West 26th Street (between Broadway and 6th Avenue)

- 10th Floor Front
- 2,500 rentable sq ft
- Front corner unit with 3 sides of oversized windows.
- 1 conference room, kitchen, private bathroom, open area, lots of light, wood floors, high ceilings.



About the Property

12 Story boutique building
Brand new elevators
Steps from Madison Square Park
Close Subway access to R,W,F,M,1,6

All information is furnished from sources deemed reliable, but no representation is made as to the accuracy thereof, and same is submitted subject to errors, omissions, change of price, rental, or other conditions, prior sale, lease or financing and/or withdrawal without notice. This listing does not constitute an employment. All areas and dimensions are approximate.

Other Terms

- Possession: Immediate
- Rent: Negotiable
- Landlord will modify/upgrade current installation
- Electric direct metered to Con Ed
- Tenant controlled air cooled a/c

