

FOR LEASE

OFFICE AVAILABILITY

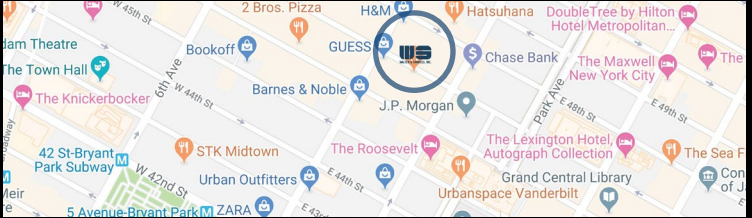
5 EAST 47TH STREET

Turn-key & move-in ready - Steps Off Fifth Avenue

2nd Floor: 2,500 RSF

3rd Floor: 2,500 RSF

5th Floor: 2,500 RSF



Medical Office Space Opportunity

ADDRESS:	5 East 47th Street
CROSS STREETS:	Fifth & Madison Avenues
AVAILABLE SPACE:	2,500 - 7,500 RSF
ASKING RENT:	Upon Request
CONDITIONS:	Built space
TERM:	3 to 10 Years

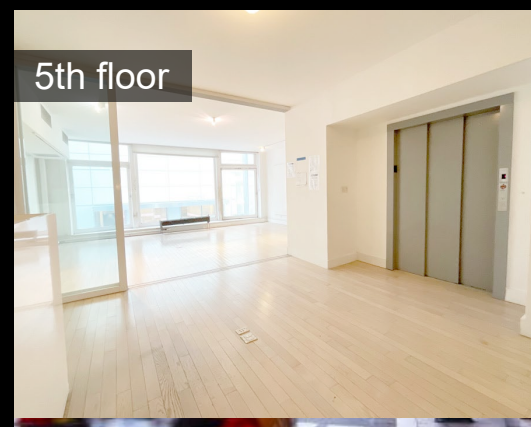
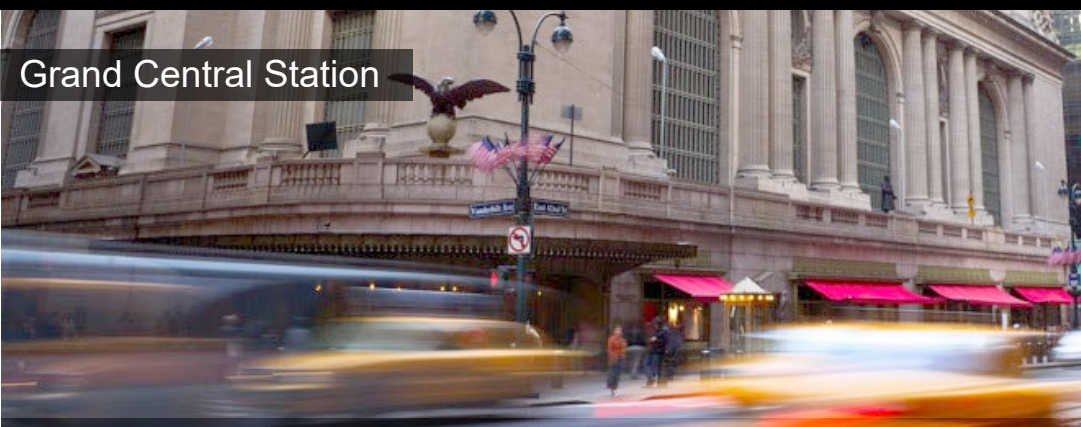
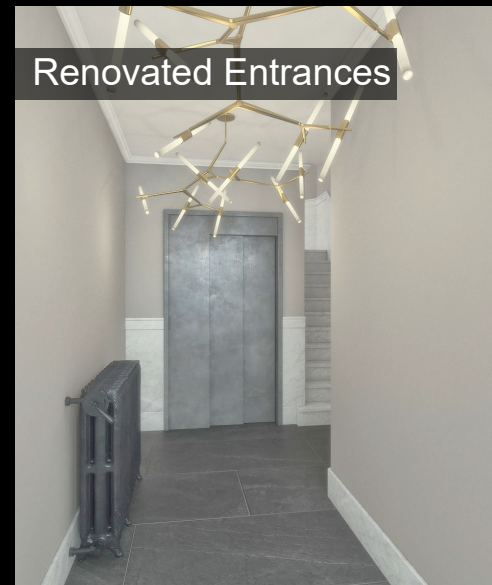
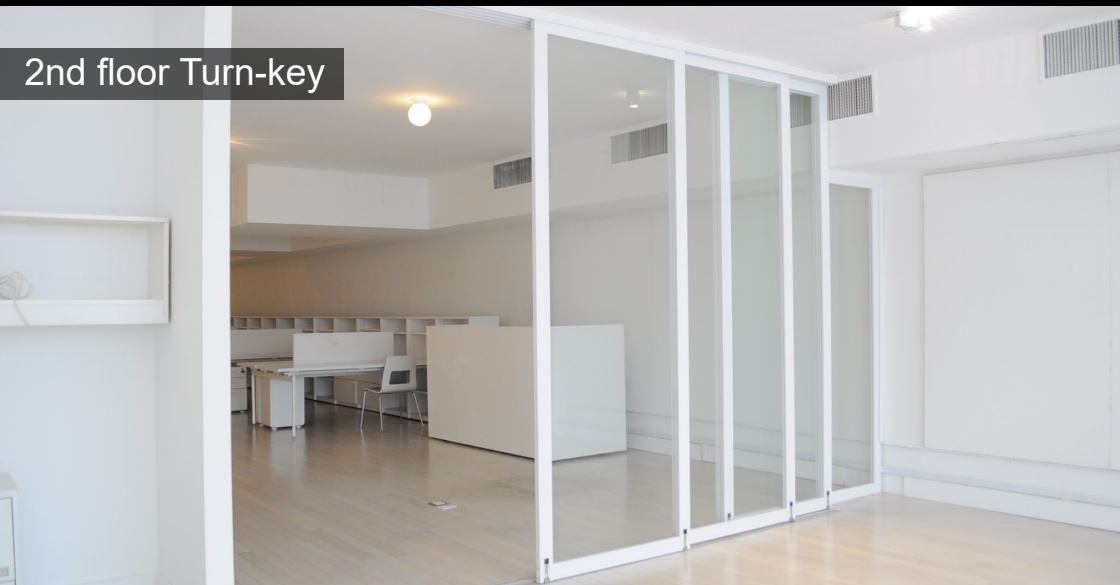
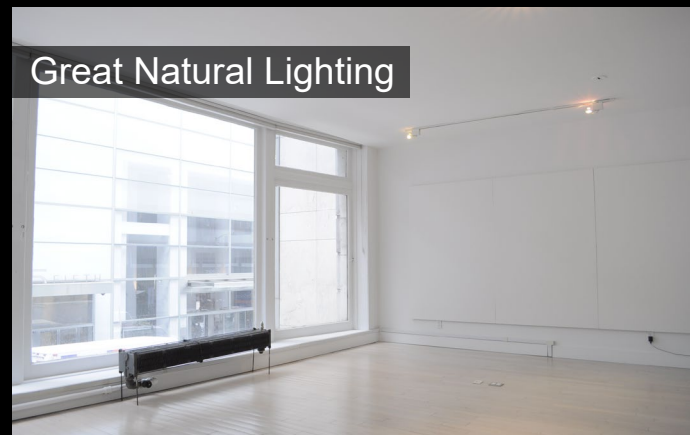
Property Highlights

24 hours 7 days a week access, tenant controlled central A/C systems. In the heart of the Diamond District with proximity to Garden Central & Rockefeller Center. Brand new elevator and lobby recently completed.

Transportation

D, B, F, M, E, S, 4, 5, 6, 7 & (Metro-North)





FOR LEASE

OFFICE AVAILABILITY

2ND FLOOR

5 EAST 47TH AVENUE

BETWEEN FIFTH & MADISON AVENUES

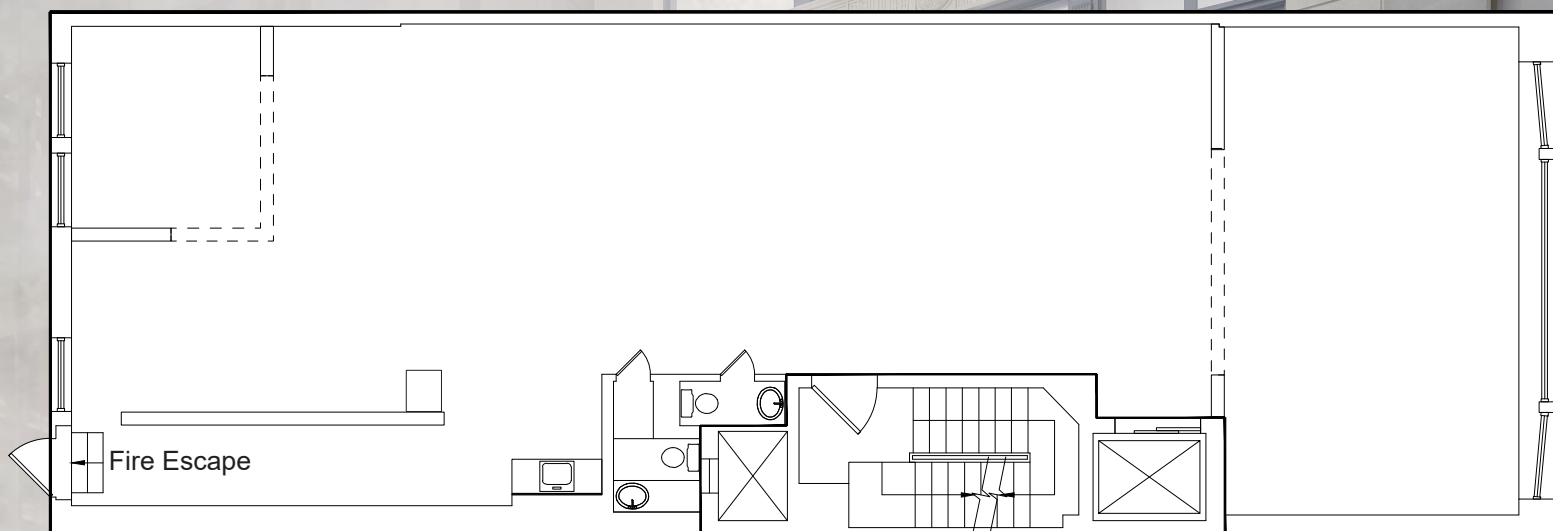
2ND | ENTIRE 2,500 RSF

SPACE NOTES

- Full Floor Presence
- Direct Elevator Exposure
- Conference room
- Large Show room + Natural light
- Column Free Floorplate
- Close Proximity to Grand Central, Fifth Avenue and Diamond District

Turnkey Space

**some furniture available*



FOR LEASE

OFFICE AVAILABILITY

3RD FLOOR

5 EAST 47TH AVENUE

BETWEEN FIFTH & MADISON AVENUES

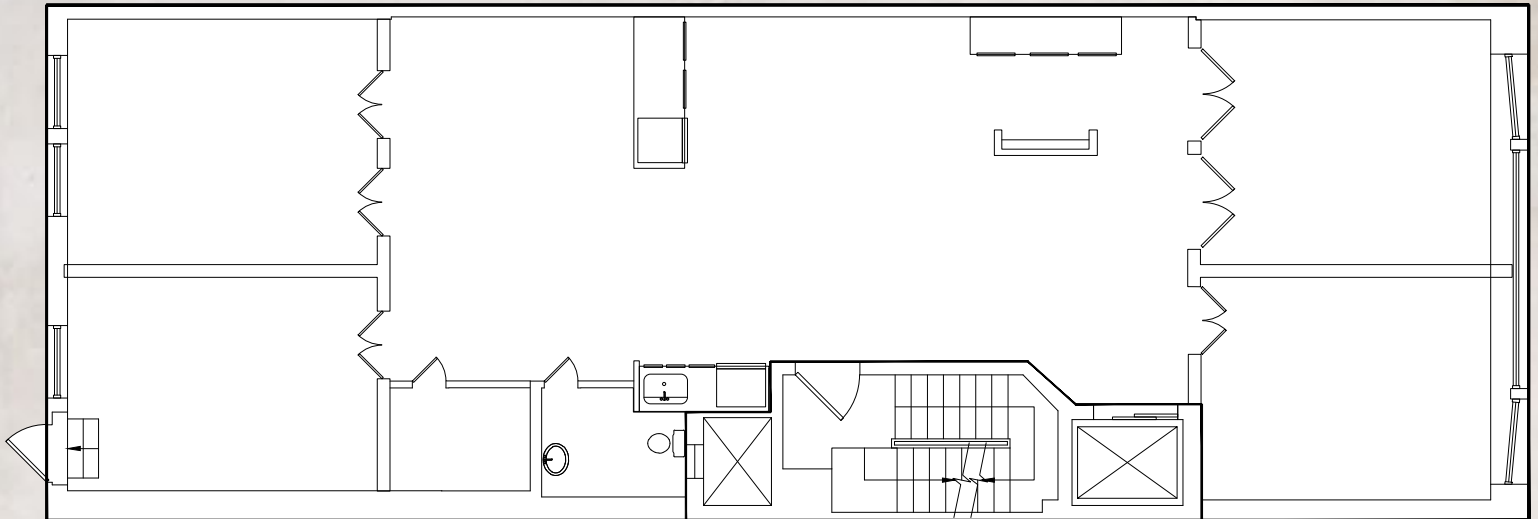
3RD | ENTIRE 2,500 RSF

- Full Floor Presence
- Direct Elevator Exposure
- Brand NEW Elevator
- 4 Offices/ Flex 6 Offices

SPACE NOTES

- Wet Pantry + Wine Cooler
- Column Free Floorplate
- Close Proximity to Grand Central, Fifth Avenue and Diamond District

Turnkey Space



FOR LEASE

OFFICE AVAILABILITY

5TH FLOOR

5 EAST 47TH AVENUE

BETWEEN FIFTH & MADISON AVENUES

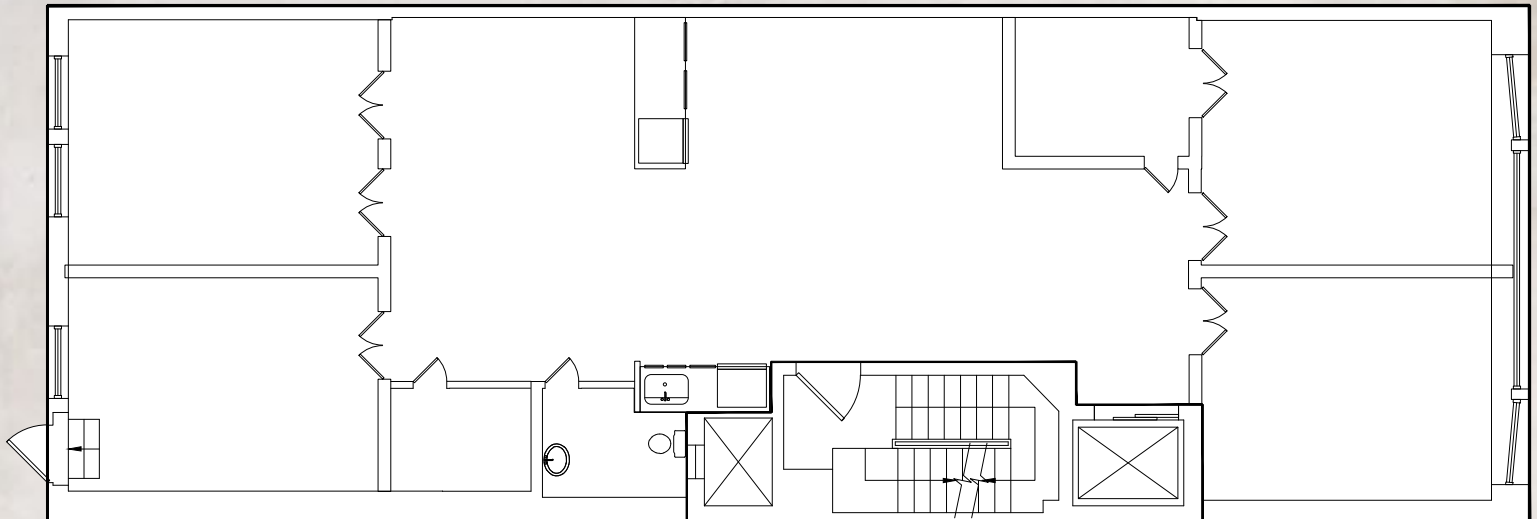
5TH | ENTIRE 2,500 RSF

- Full Floor Presence
- Direct Elevator Exposure
- Brand NEW Elevator
- 4 Offices/ Flex 6 Offices
- Copy/File room

SPACE NOTES

- Wet Pantry + Wine Cooler
- Column Free Floorplate
- Close Proximity to Grand Central, Fifth Avenue and Diamond District

Turnkey Space



FOR LEASE

OFFICE AVAILABILITY

TYPICAL FLOOR

5 EAST 47TH STREET

BETWEEN FIFTH & MADISON AVENUES

Typical Floor Plate

