

BUILT PARTIAL FLOOR

LARGE WINDOWS WITH GREAT NATURAL LIGHT



LEASE NOTES:

PREMISES:

45 West 21st Street
Partial 5th Floor - 5C

AREA:

2,550 RSF

RENT:

Upon Request

POSSESSION:

Immediate

TERM:

3 - 10 years

ELECTRIC:

Direct to ConEd

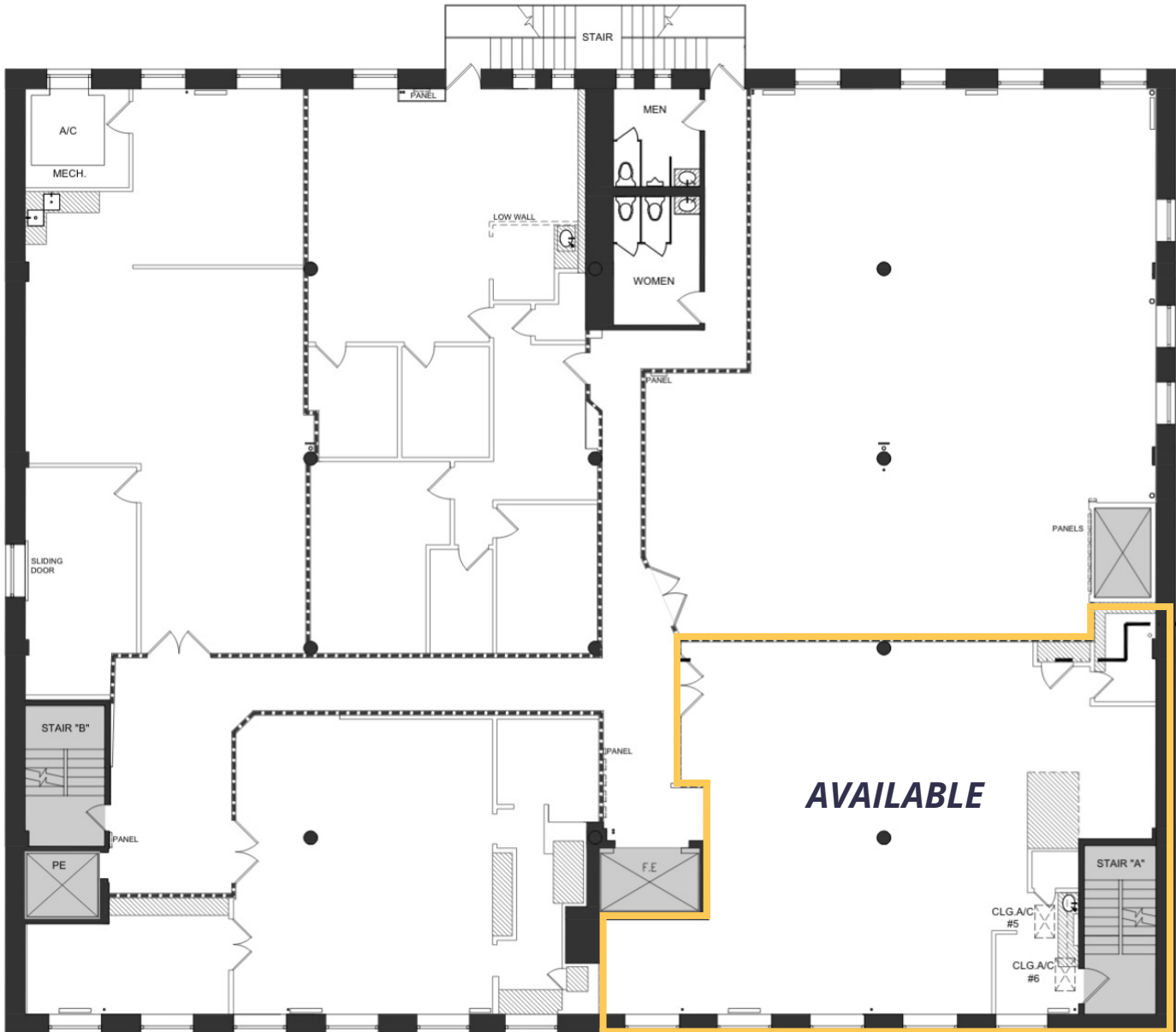
SPACE DETAILS:

- Large open bullpen area
- Wet pantry
- Conference room
- Excellent light

BUILDING DETAILS:

- 24/7 access
- Attended lobby
- Shown by super 9 am - 1 pm, 2pm - 4pm

FLOORPLAN | 2,550 RSF



WEST 21ST STREET

