

PRISTINE OFFICE SPACE AVAILABLE FOR SUBLEASE

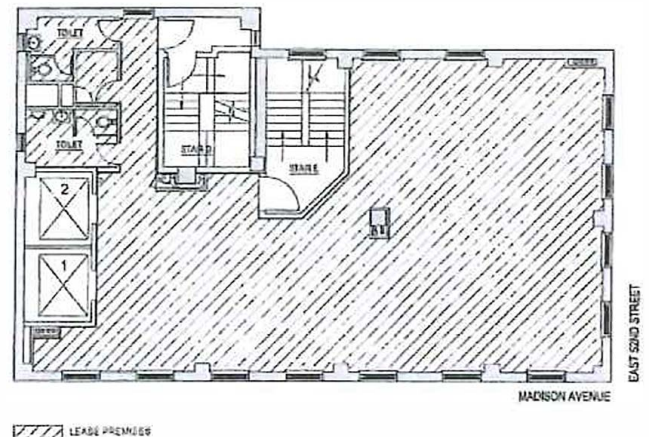
501 MADISON AVENUE, 26TH FLOOR - 2,752 SF
NEW YORK, NY 10022

FIRST-CLASS OFFICE SPACE NEAR GRAND CENTRAL, WITH
CONVENIENT ACCESS TO MAJOR SUBWAY AND BUS LINES.



DETAILS:

- Located in Mid-town's business core surrounded by NY's tech, advertising and financial firms
- Fully Furnished
- Direct elevator access
- Kitchen/Wet Pantry
- Two private bathrooms
- Single floor tenancy
- Wired-certified Gold
- Building Renovated in 2014



PRISTINE OFFICE SPACE AVAILABLE FOR SUBLEASE

501 MADISON AVENUE, 26TH FLOOR - 2,752 SF
NEW YORK, NY 10022

FIRST-CLASS OFFICE SPACE NEAR GRAND CENTRAL, WITH
CONVENIENT ACCESS TO MAJOR SUBWAY AND BUS LINES.

