

SUBLEASE AT PENN 1



PARTIAL 16TH FLOOR | 2,974 RSF

POSSESSION | IMMEDIATE

TERM | THROUGH AUGUST 2029

RENT | UPON REQUEST

FEATURES

- Partially constructed suite with ability to modify installation to suit tenant's needs
- Great views South overlooking Madison Square Garden
- Financially strong sublessor
- Aggressively priced

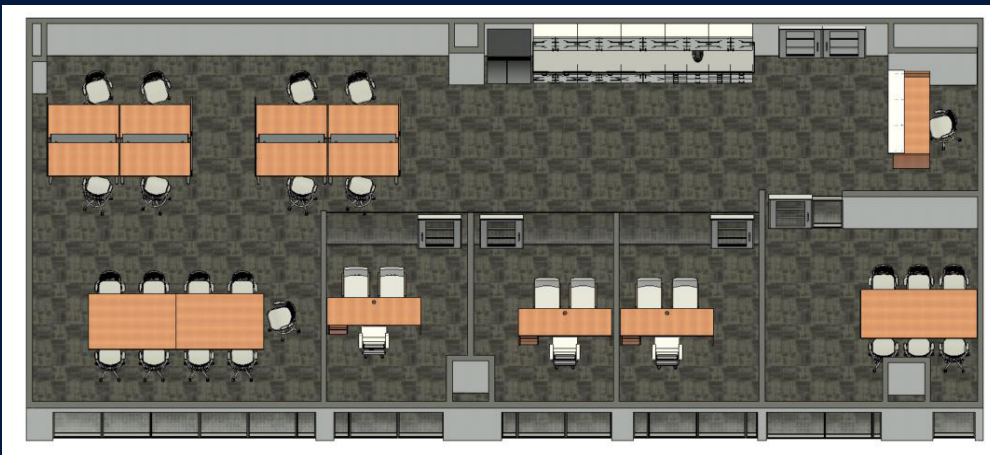
BUILDING FEATURES

Newly created amenity center including fitness center, conferencing, restaurant with bar and private dining, and open work areas

Direct access to Penn Station



PROPOSED LAYOUT



33RD STREET