



# *Boutique Loft Space in the Heart Of Soho*

---

Partial 3<sup>rd</sup> floor - 2,985 SF

**42-44  
GREENE STREET**

Between Broome Street & Grand Street

# 42-44 GREENE STREET

Between Broome Street & Grand Street

Partial 3<sup>rd</sup> Floor – 2,985 SF

## Space Features

- Exposed brick walls
- Large Windows
- Hardwood Floors
- Fully Wired / Fiber

## Building Features

- 24/7 Access
- Façade Restoration completed
- Lobby/Elevator modernization completed
- Owner Managed

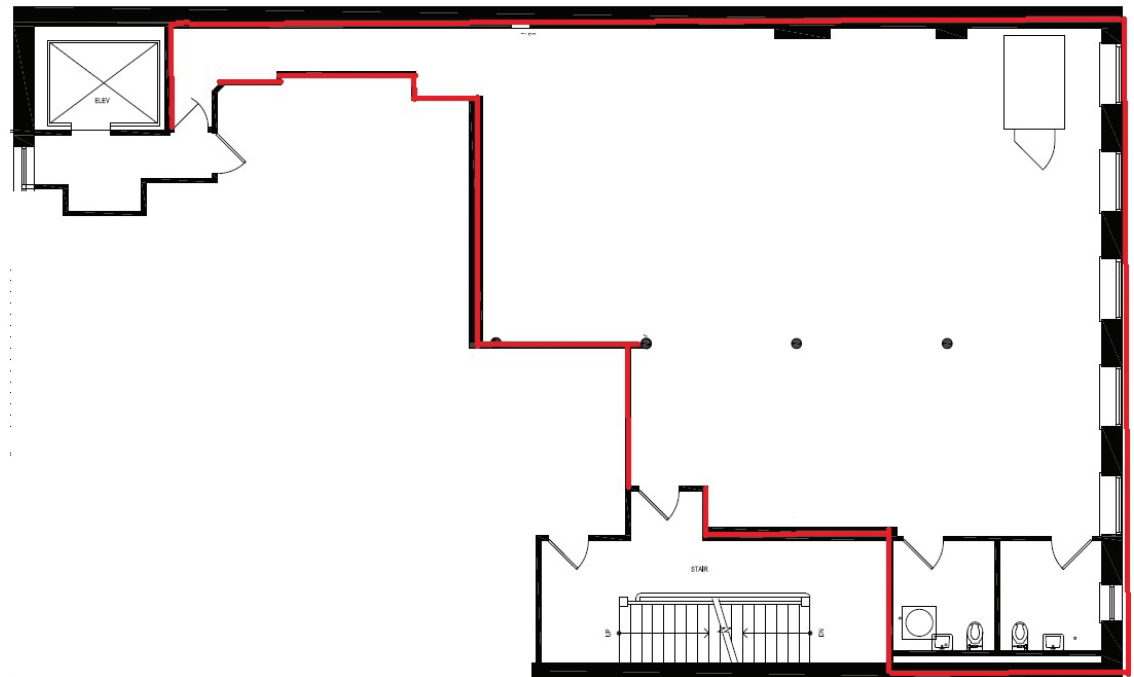
## Location:

Between Broome & Grand Street

Transportation:

A,C,E,N,R,Q,J,6 Subway lines

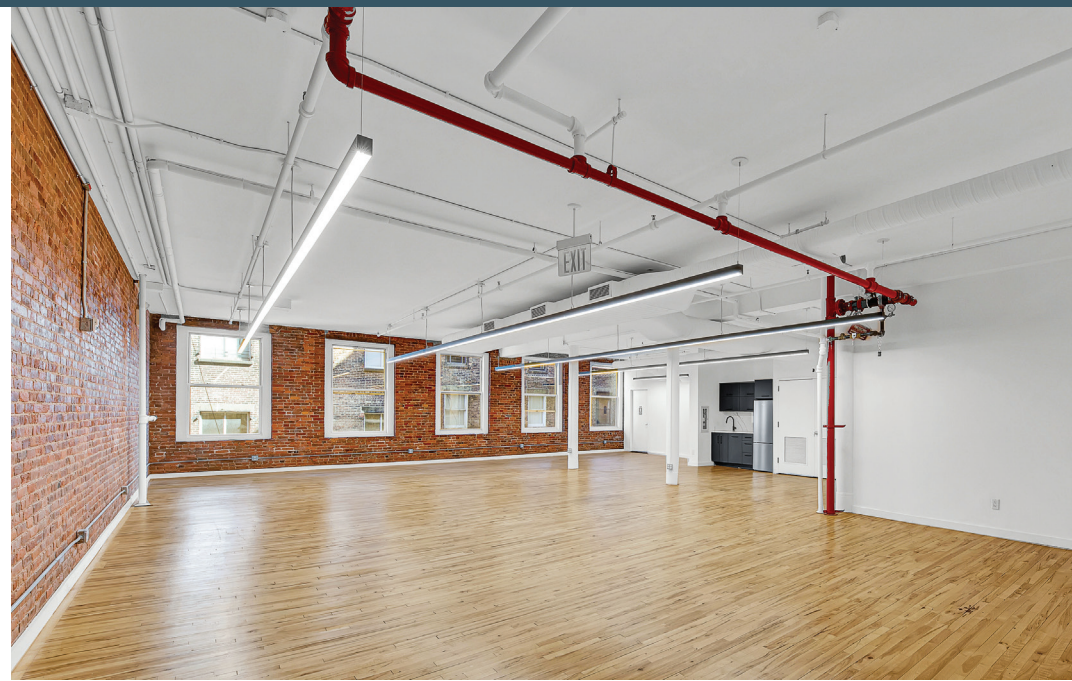
3<sup>rd</sup> Floor





# 42-44 GREENE STREET

Between Broome Street & Grand Street



3<sup>rd</sup> floor



# 42-44 GREENE STREET

Between Broome Street & Grand Street

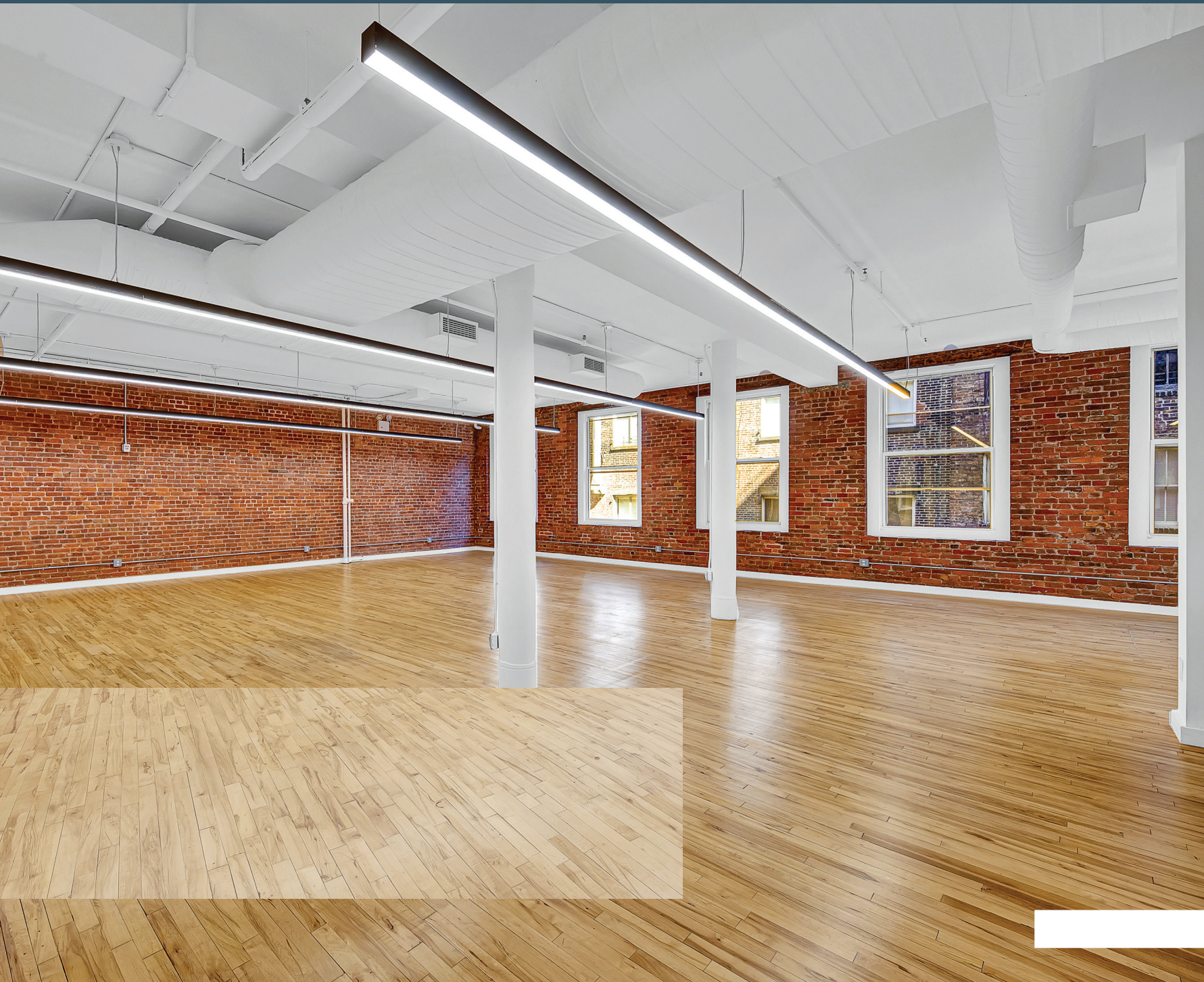


3<sup>rd</sup> floor



# 42-44 GREENE STREET

Between Broome Street & Grand Street



3<sup>rd</sup> floor