



Existing Conditions

# 200 Park Avenue South

Northwest Corner of East 17th Street, Union Square

Move-in Ready 2,989 RSF Carpeted Space  
Steps from all that Union Square's Surrounding Area Offers  
Green Market, Restaurants, Retail, Citibike & other work/lifestyle benefits

Direct access to the Union Square transportation  
hub's 4 5 6 L N Q R W express/local subways  
and NJ  train at 23rd Street/6th Avenue station

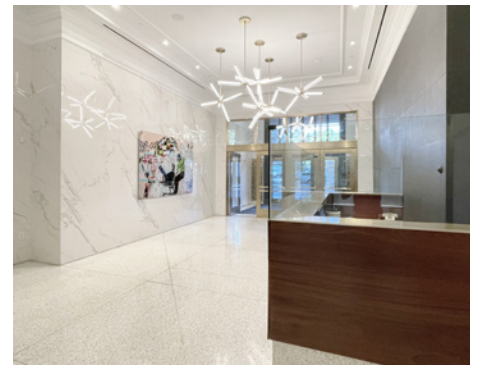


Suite 1109: 2,989 rsf

- Move-in ready fully carpeted space with eastern exposure offering good natural light
- (1) Windowed conference room, (1) meeting room
- (3) Interior offices, open area, and updated wet pantry

Possession: Immediate

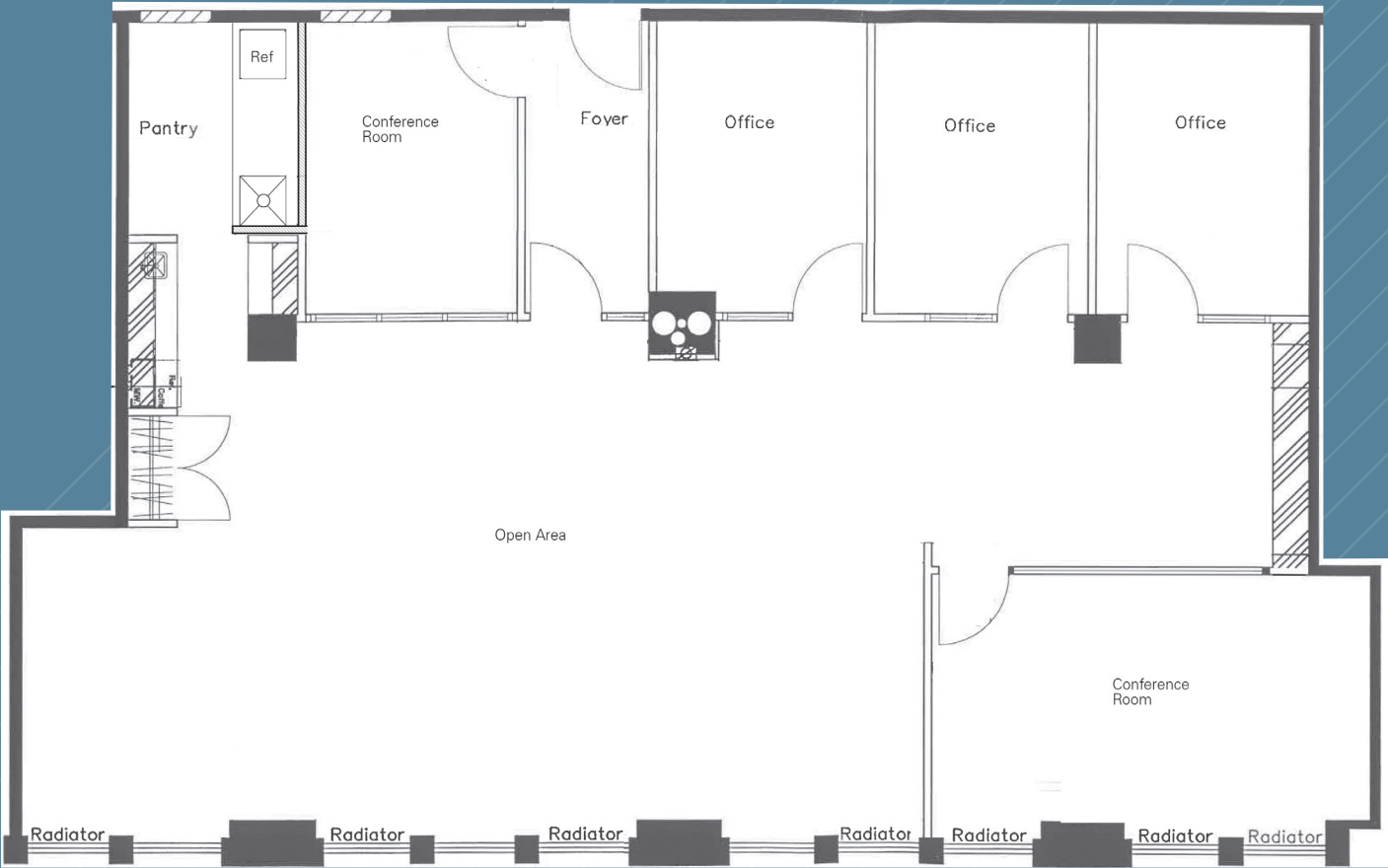
Rent: Call or email for details



- Overlooking Union Square Park, offering tenants a burgeoning submarket full of creative tenancy
- 12'-2" Ceiling heights and tenant controlled air conditioning
- Card-key security system providing 24/7/365 access via attended lobby
- Direct access to the Union Square transportation hub's 4 5 6 L N Q R W express and local subway lines, and vicinity of NJ PATH station at 23rd St/6th Ave
- Steps from the farmers market and Broadway's retail corridor offering a wide selection of shopping and dining options, fitness studios, and a myriad of other work/lifestyle benefits



SUITE 1109 - 2,989 RSF  
(AS BUILT)



PARK AVENUE SOUTH

