



425 Madison Avenue

Located on Southeast Corner of East 49th Street

Grand Central— Plaza District Gem

2,951 RSF - FULLY FURNISHED
SUBLEASE OPPORTUNITY

Centrally Located Between Transportation Hubs at
Midtown's Bryant Park,
Grand Central Terminal
and Rockefeller Center



Conference Room



Central Hallway

Available Space

Partial 3rd Floor:

2,951 rsf

- Built space with (1) windowed executive office, corner conference room, (1) windowed office, (1) large interior office, reception area with seating, and dry pantry

Sublease Term:

Through September 29, 2024

Possession:

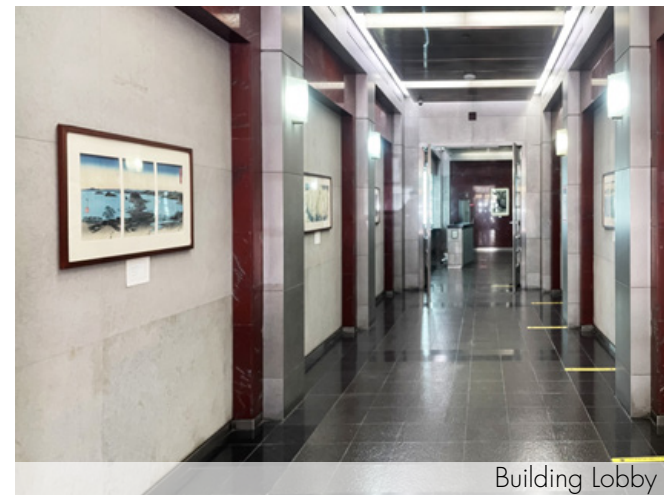
Immediate

Rent:

Aggressively priced

Highlights:

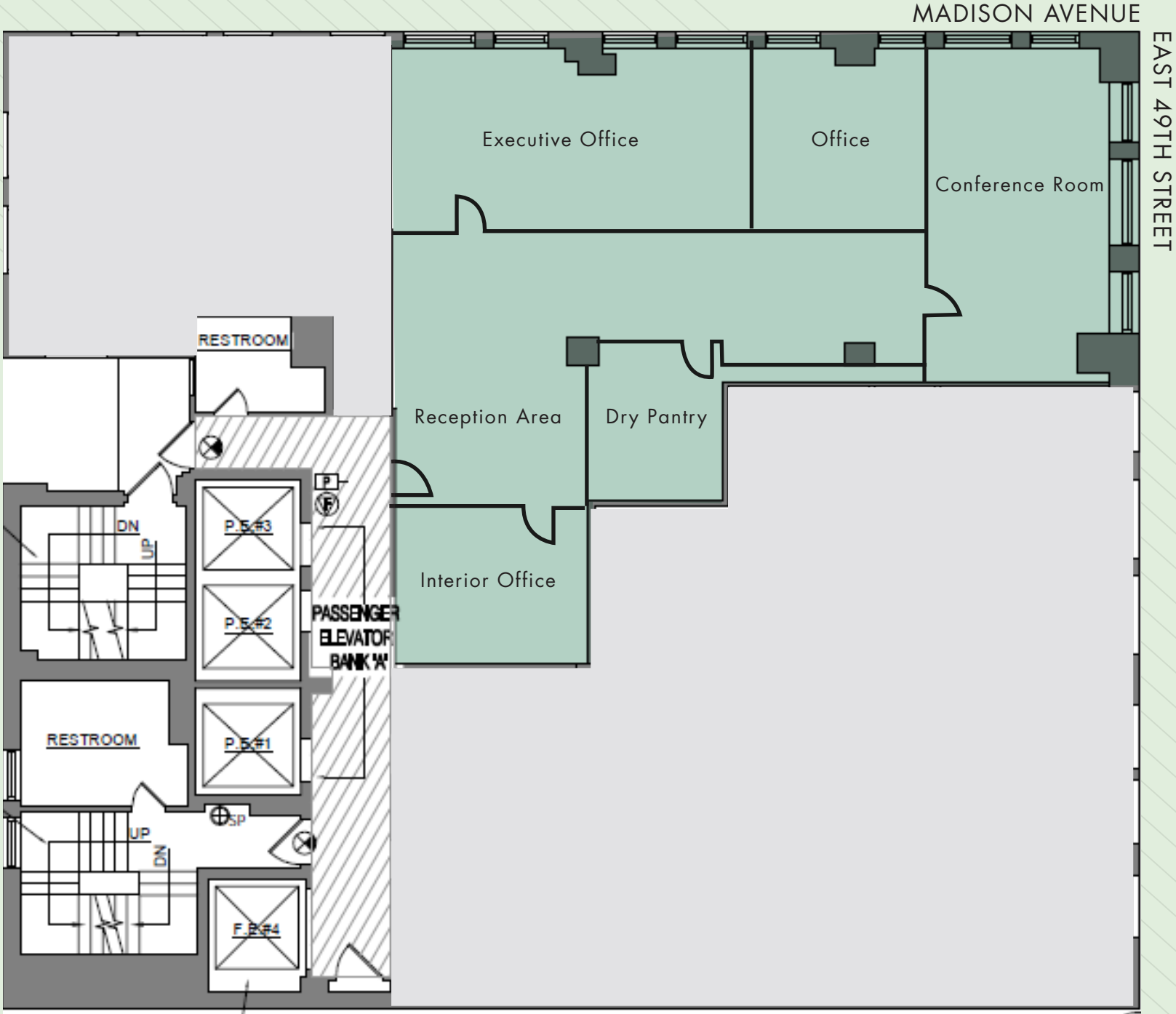
- Boutique office building in central Midtown East location; 24/7 Attended, beautifully appointed lobby
- Close proximity to Grand Central Terminal, Rockefeller Center, and Bryant Park transportation hubs



Building Lobby

PARTIAL 3RD FLOOR - 2,951 RSF
(AS-BUILT)

[Click to View Virtual Tour](#)



PARTIAL 3RD FLOOR - 2,951 RSF
(EXISTING CONDITIONS)



Windowed office



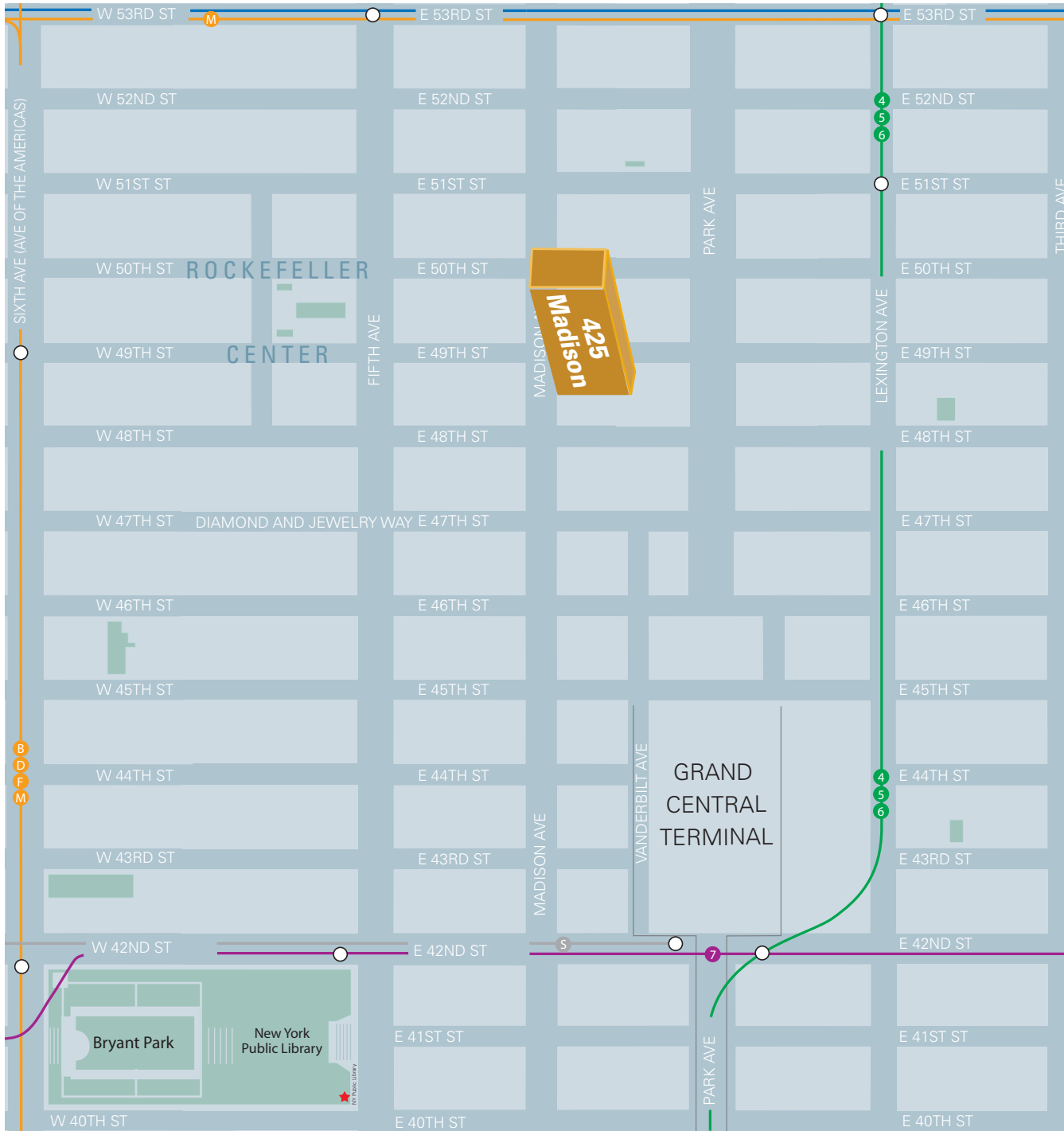
Oversized Executive Office



Reception Area



Central Hallway



Rockefeller Center



Grand Central Terminal