



425 East 61st Street

Between 1st & York Avenues

Close Proximity to "Hospital Row"

Rockefeller University

Hospital for Special Surgery

The Schwarzman Animal Medical Center

Manhattan Eye, Ear, and Throat Hospital

Memorial Sloan Kettering Cancer Center

NewYork-Presbyterian/Weill Cornell Medical Center

20,000 RSF Available



20,000 RSF Total Available on Contiguous Floors

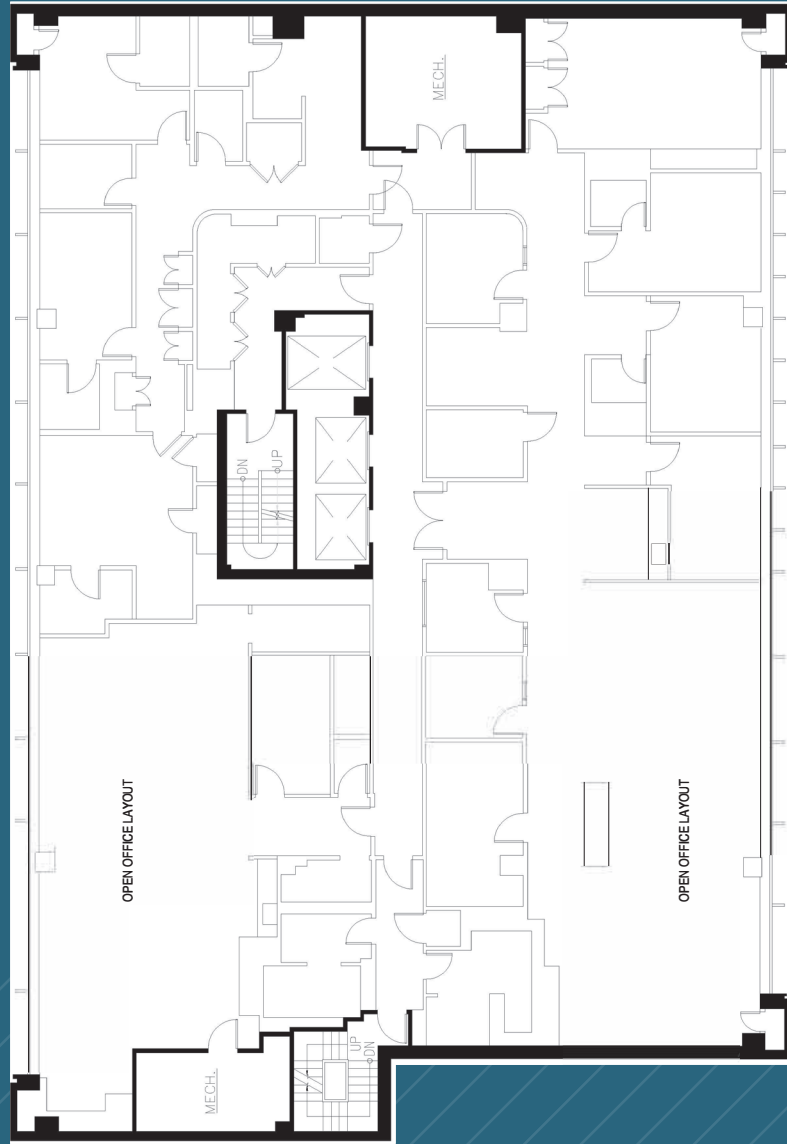
Entire 2nd Floor: 10,000 RSF
Entire 3rd Floor: 10,000 RSF

Floors can be leased separately and
2nd Floor divisible, 5,000 rsf/unit

Possession: Q1 2023

- Join major tenants NewYork-Presbyterian and Weill Cornell Medicine
- Very efficient floor plates
- Floors feature north and south exposure allowing for good natural light and views
- On-site parking garage accessible via convenient circular driveway, state-of-the-art security, 24/7/365 access
- Adjacent to Memorial Sloan Kettering Cancer Center and vicinity to Cornell Tech campus on Roosevelt Island
- Accessible via the **N R 4 5 6** express/local subways at Lexington Ave/59th St, **F Q** lines at the Lexington Ave/63rd St station, **M15 Q101 Q60** bus lines, as well as the Roosevelt Island Tram at 59th St/2nd Ave

ENTIRE 2ND FLOOR - 10,000 RSF
(AS-BUILT - CAN BE LEASED AS SEPARATE 5,000 RSF OFFICES)



ENTIRE 3RD FLOOR - 10,000 RSF
(AS-BUILT)



(for descriptive purposes only; not to scale.)