

**1375**  
BROADWAY

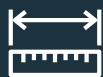
**IN THE HEART  
OF THE  
COMMUTER  
TRIANGLE**  
FOR SUBLEASE

**SPACE FEATURES:**

- Plug 'n play creative space with a mix of polished concrete and carpeted floors, open ceilings, and glass fronted offices and meeting rooms
- Layout includes 1 Boardroom, 6 Conference Rooms, 18 Break Out Rooms/Offices, 139 Workstations & a large communal pantry
- Full floor presence



**PREMISES:**  
Entire 11th Floor



**SIZE:**  
22,549 RSF



**TERM:**  
Through May 2025



**POSSESSION:**  
Immediate



**RENT:**  
Upon Request

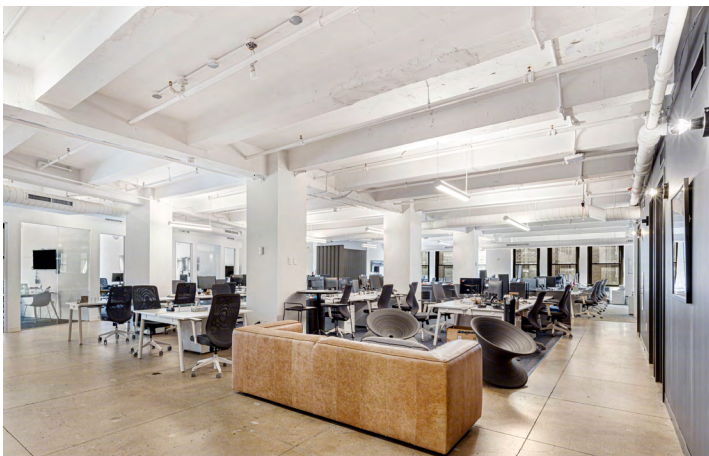
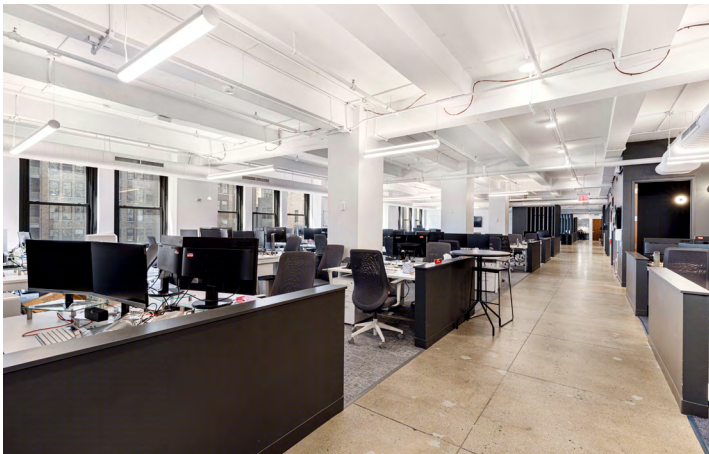


# SPACE INFORMATION

**1375**  
BROADWAY

## BUILDING HIGHLIGHTS:

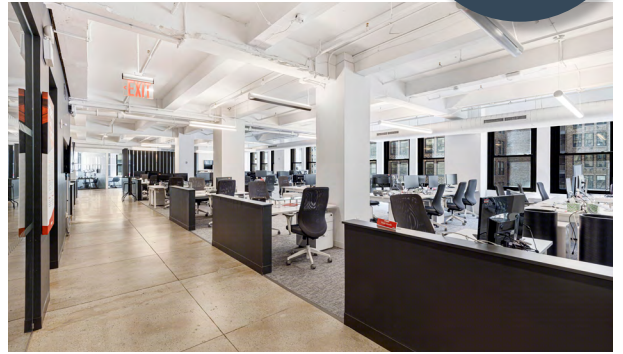
- 24-hour, 7-day access
- Entrances on Broadway and 37th Street
- Recently renovated attended lobby
- Tenant amenity communal outdoor space estimated to be ready for use Summer of 2022
- Institutional Ownership
- Destination Dispatch Elevators
- Walking distance to 16 subway lines





# SPACE PHOTOS

1375  
BROADWAY

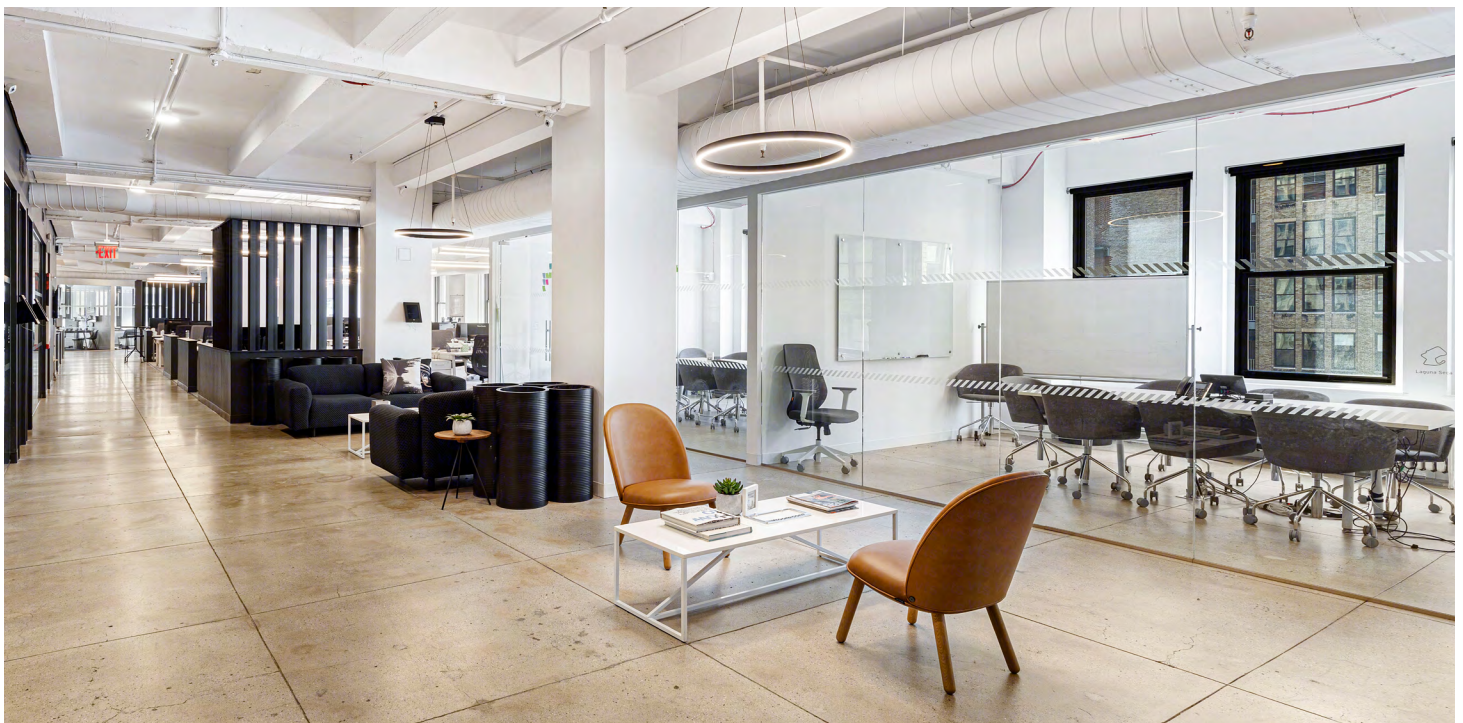
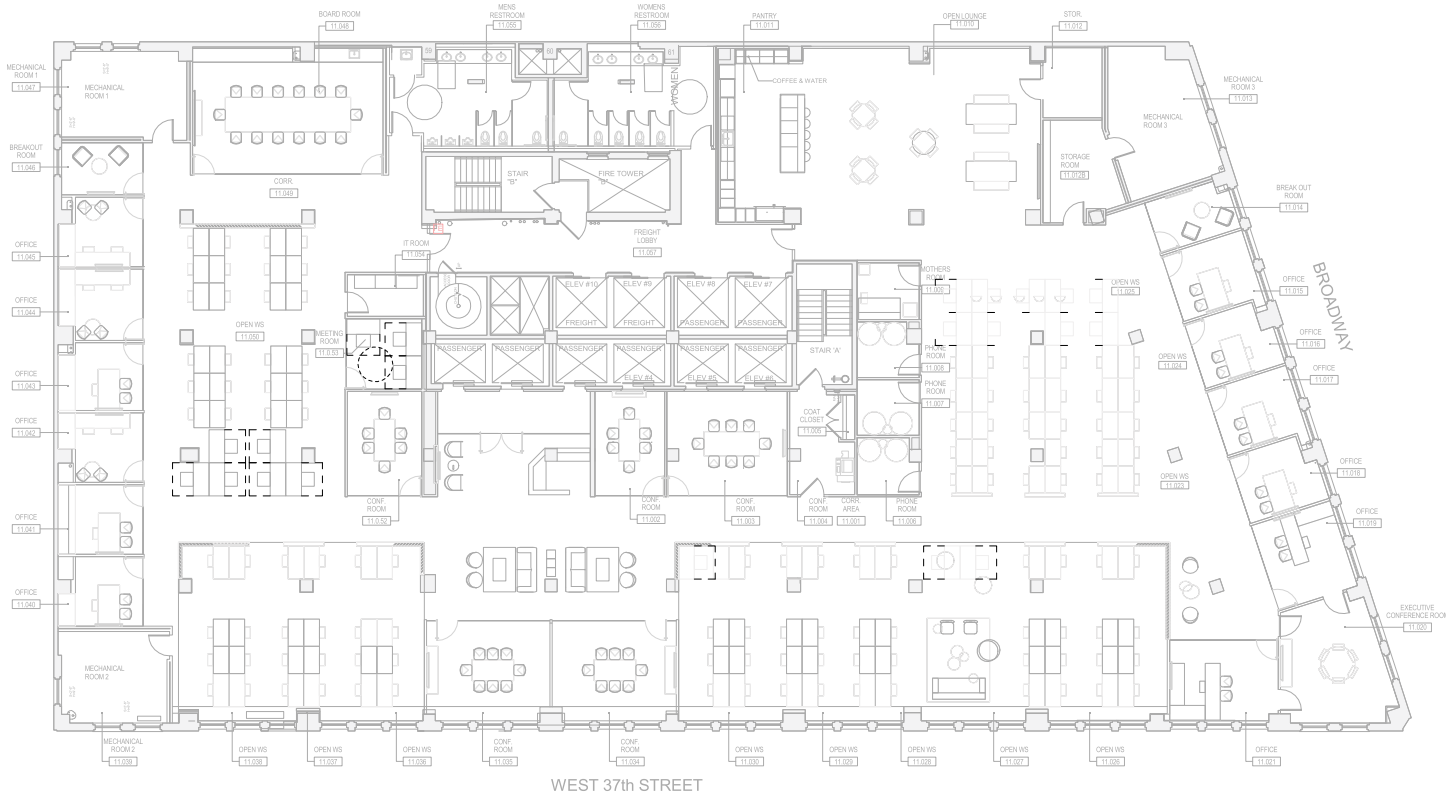




# FLOOR PLAN

**1375**  
BROADWAY

ENTIRE 11TH FLOOR  
**22,549 RSF**



# NEIGHBORHOOD MAP

**1375**  
BROADWAY



## IN THE HEART OF THE COMMUTER TRIANGLE

- Conveniently positioned within walking distance to Grand Central Terminal, Port Authority and Penn Station
- Midtown South feel with Class A Bryant Park efficiency and location