

787
7TH
AVE

CBRE



CENTRAL PARK VIEW

E49th Floor — 24,269 RSF

14'6" CEILING HEIGHTS

Sublease Term:

Through March 2027, or
Long Term Direct Deal

Possession:

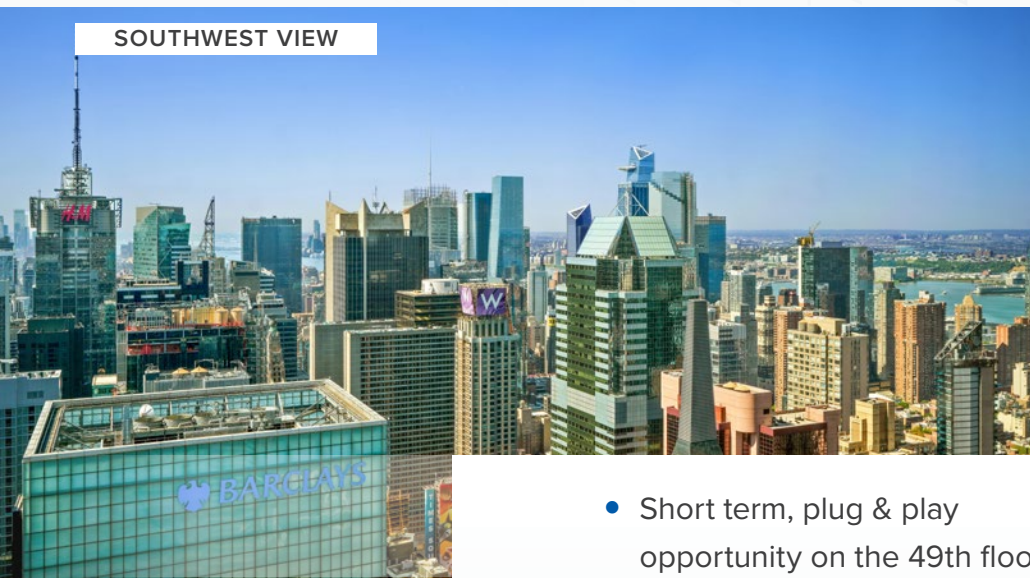
Immediate



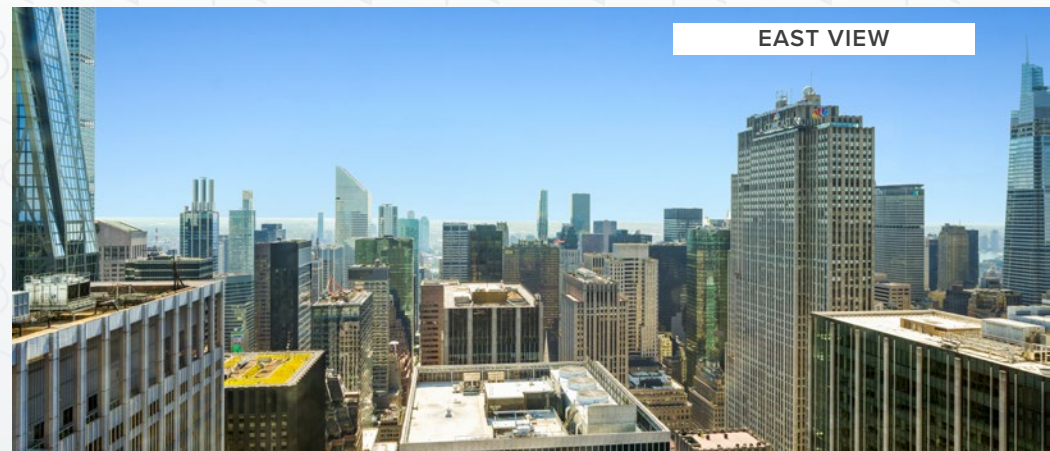
NORTHWEST VIEW



NORTHEAST VIEW



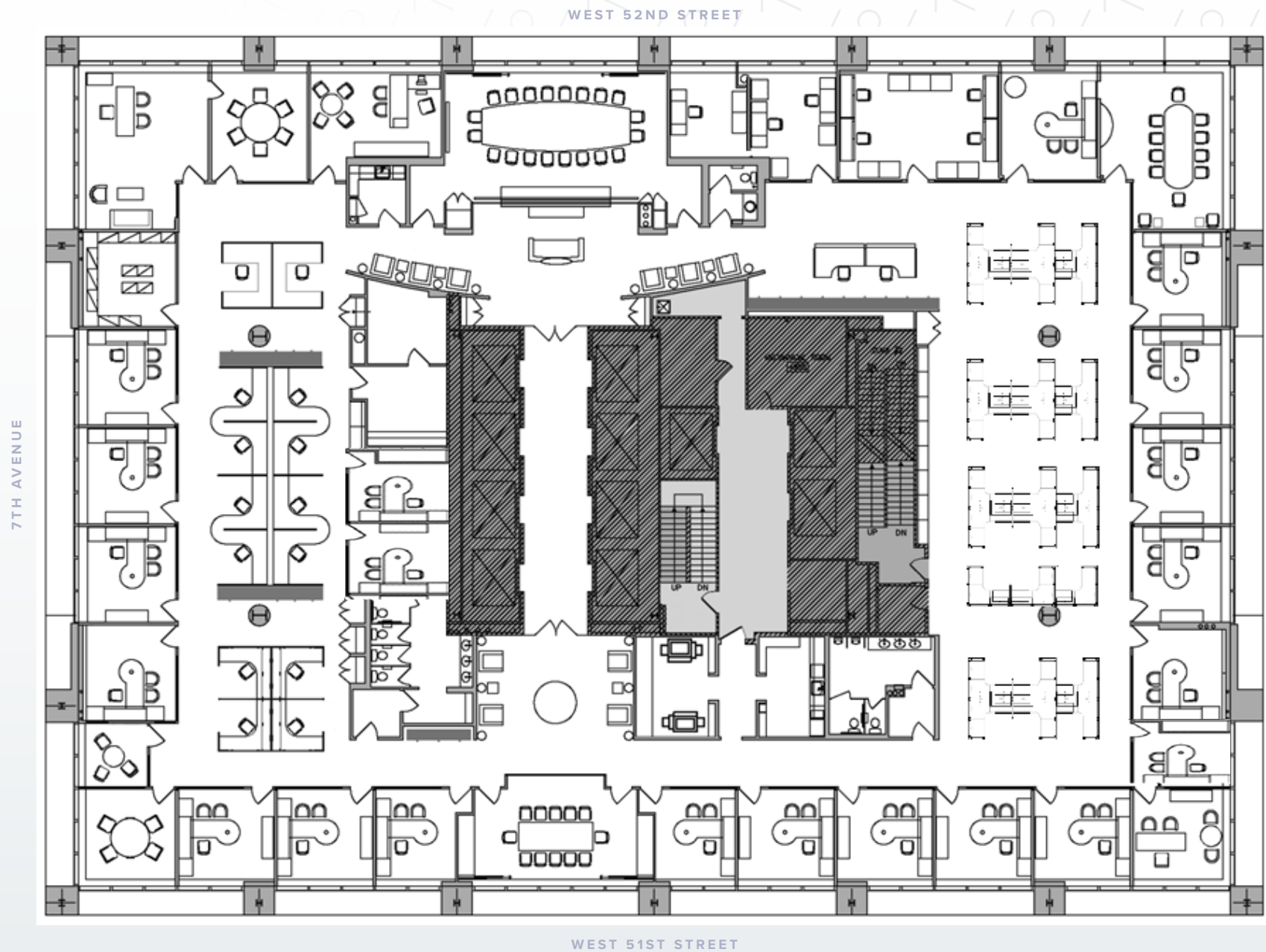
SOUTHWEST VIEW



EAST VIEW

- Short term, plug & play opportunity on the 49th floor
- 25,000 – 50,000 sq. ft. direct deal possible
- 49th floor includes a high-end build out with perimeter offices and open area on the interior
- Incredible natural light and sweeping views in all directions — Central Park, Hudson Yards, Midtown East

Entire 49th Floor — 24,269 RSF





787
7TH
AVE