

# GRAND CENTRAL SUBLEASE



## Space Profile

Space:

**Partial 4th**

**28,276 RSF**

Rent: **Upon request**

Availability: **Immediate**

Term: **Through March 2028**

## Key Highlights

- Class A landlord
- High-end creative installation
- Knoll, modular workstations with partitions in place
- Fully furnished and wired
- Direct elevator exposure

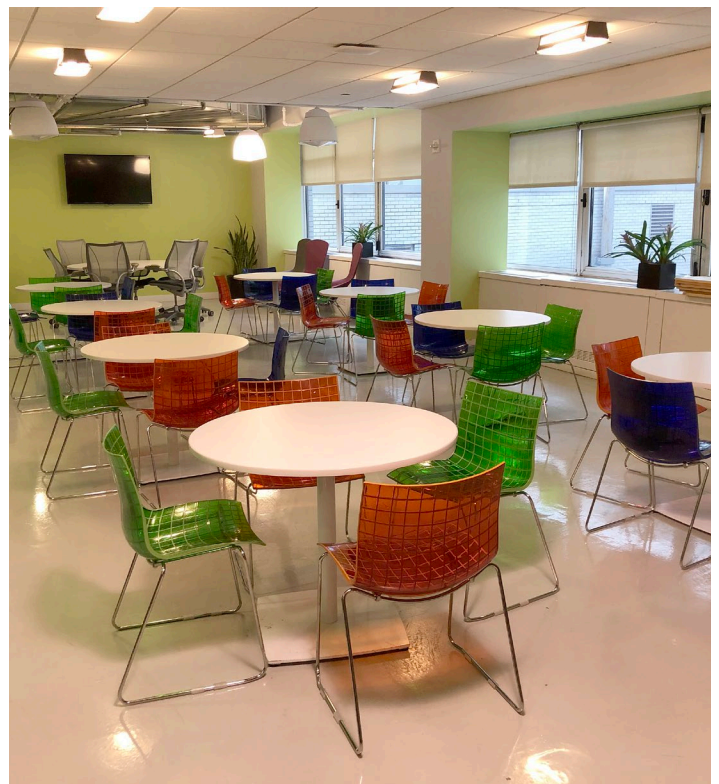
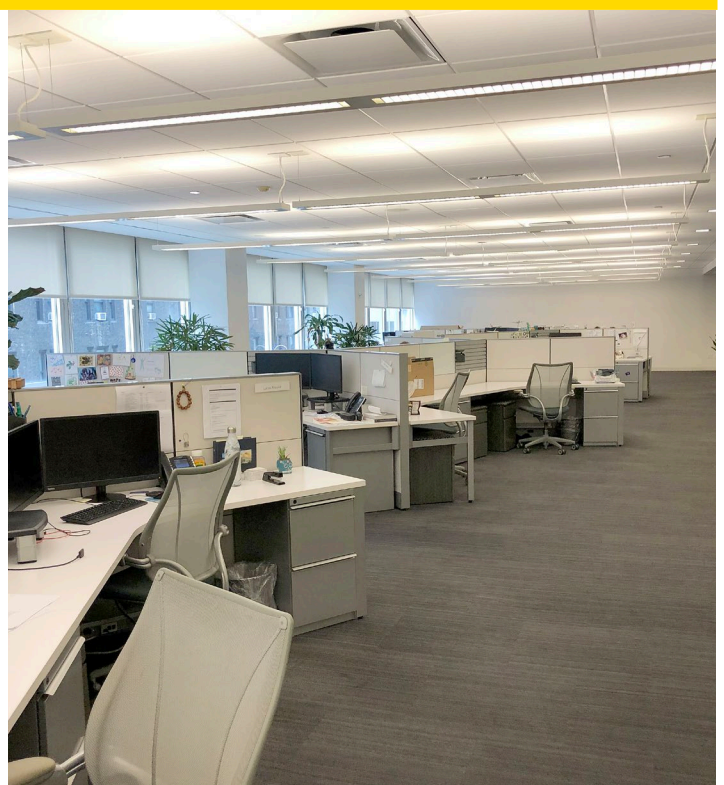


**SUBLEASE** 485 Lexington Avenue, New York, NY | Between 46th and 47th Streets





**SUBLEASE** 485 Lexington Avenue, New York, NY | Between 46th and 47th Streets



## As-Built Floor Plan 28,276 RSF

- 8** offices
- 1** large shared office
- 3** large conference rooms
- 5** small conference rooms
- 1** large training room  
(can be used as a board room)
- 1** large pantry
- 107** workstations