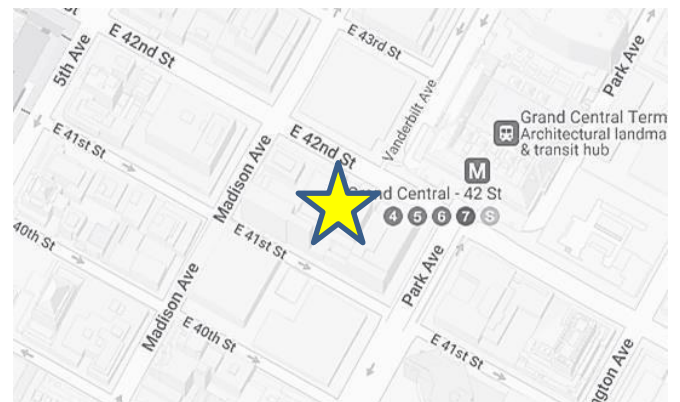


# For Sublease

60 East 42<sup>nd</sup> Street  
One Grand Central Place

High-end plug & play space in the heart of  
Grand Central



## 60 East 42<sup>nd</sup> Street | One Grand Central Place

Between Park & Madison Avenues

Entire 3<sup>rd</sup> Floor – 48,592 RSF

Partial 4<sup>th</sup> Floor – 28,790 RSF

77,382 RSF

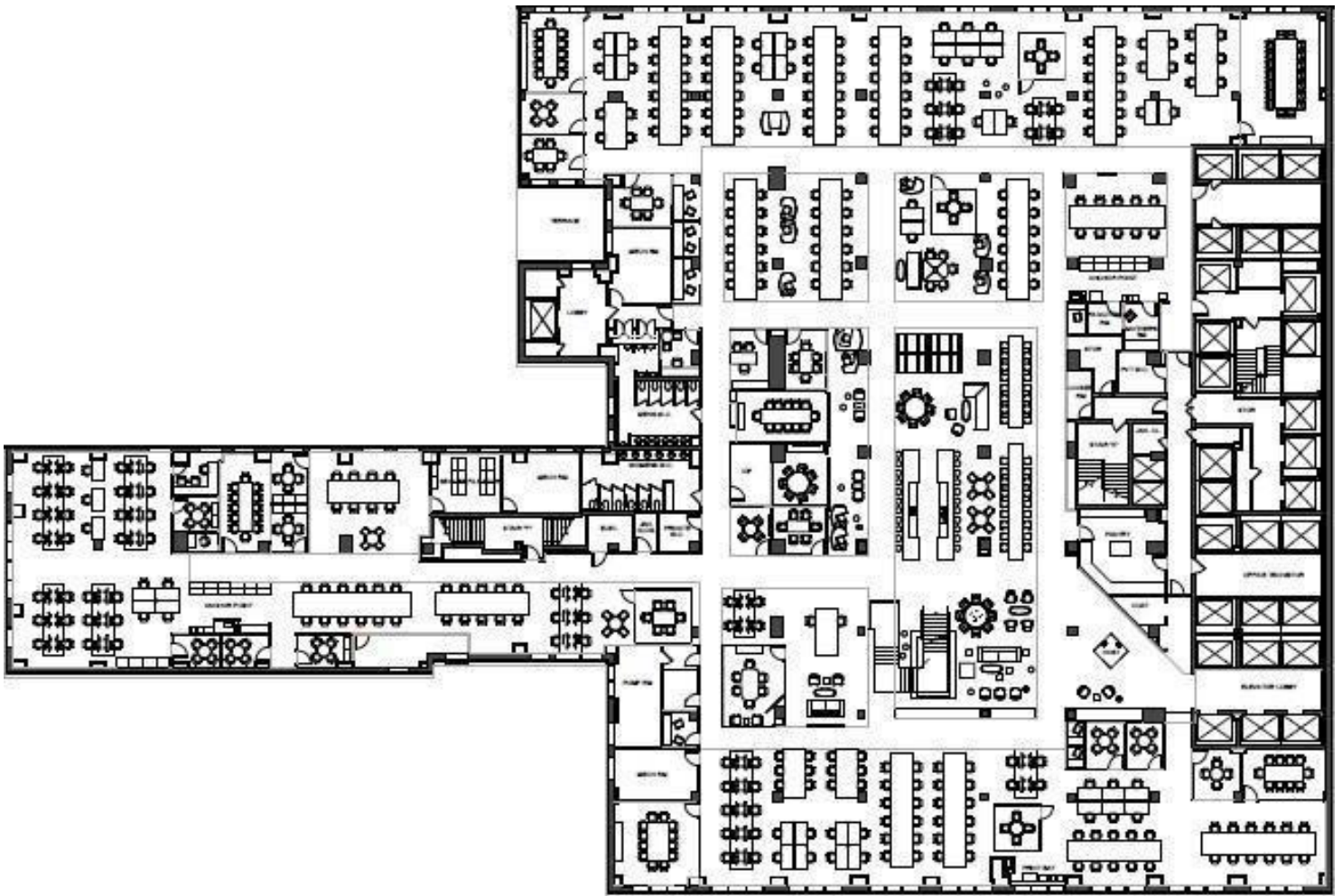
- Available immediately
- Term through October 2026
- Floors can be leased together or separately
- Built, plug & play with FF&E included
- Contact for pricing

\*Photo courtesy of ESRT



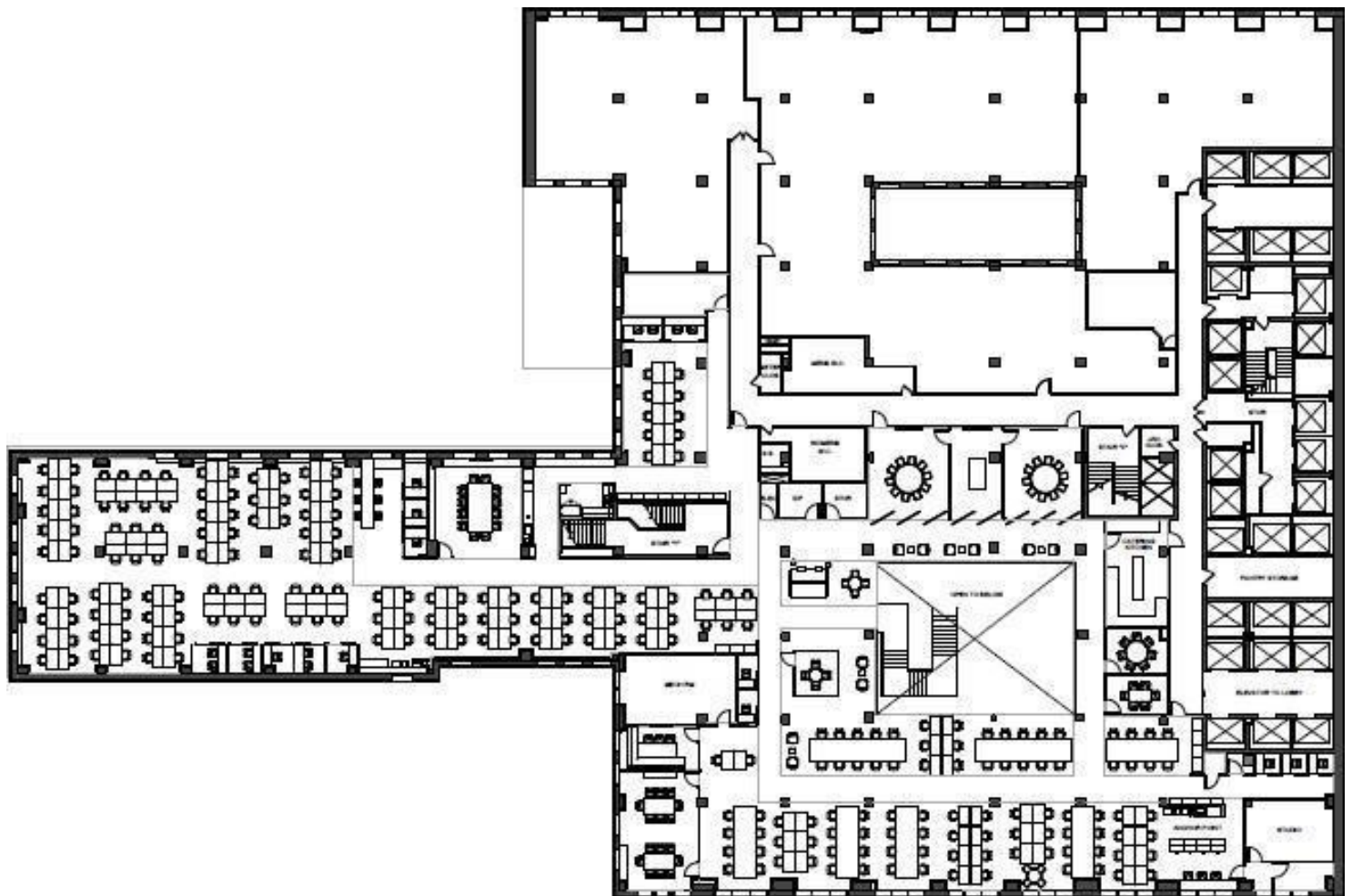
# As-Built Plan

Entire 3<sup>rd</sup> Floor – 48,592 RSF

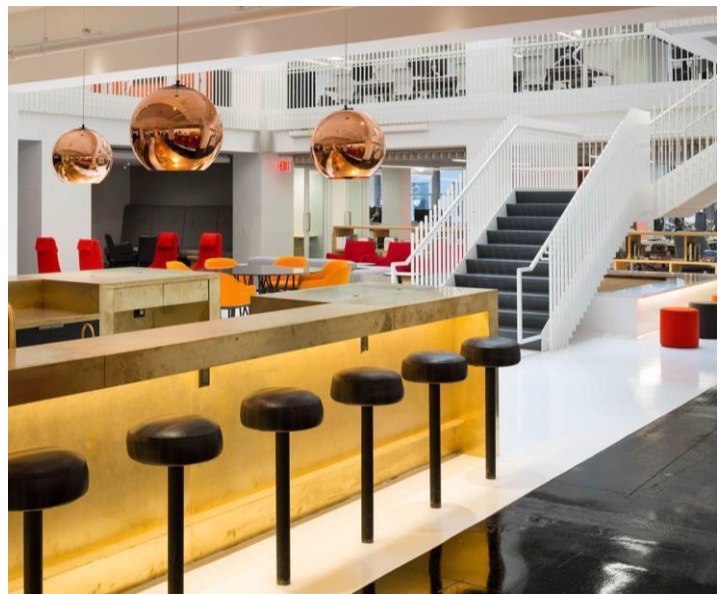


# As-Built Plan

Partial 4<sup>th</sup> Floor – 28,790 RSF



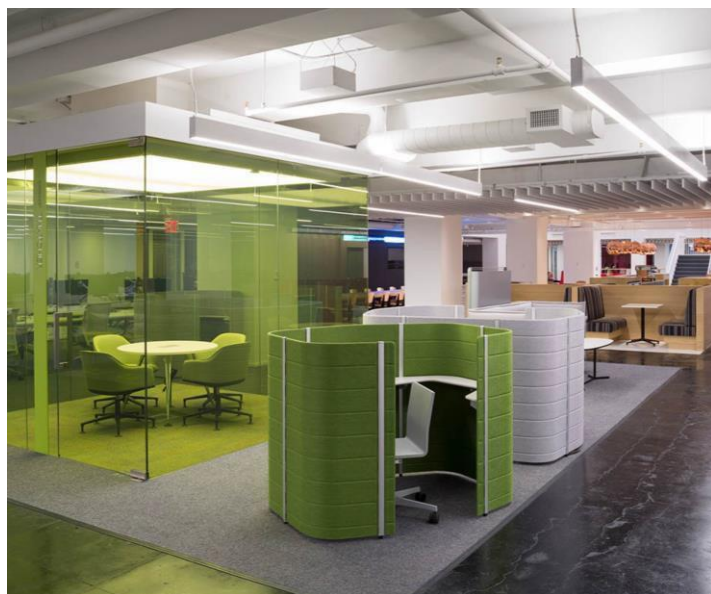
# Photos



\*Photos courtesy of ESRT



# Photos



# Photos

