

3 | 5
H | Y

AWARD
WINNING
SPACE AT
A WORLD-
CLASS ASSET

A COMMITMENT TO THE FLEXIBILITY FOR PEOPLE TO MAXIMIZE THE POTENTIAL WITHIN

SUBLEASE OFFERING

- 90,000 RSF block
- Available immediately
- Plug n' play opportunity
- High-end installation designed by A+I
- Collaborative layout
- Flexible term length
- River and Hudson Yards plaza views
- Steps from top tier retail and restaurants
- World-class Equinox hotel, fitness club and SoulCycle in building
- Members-only private Carbone club coming soon



OFFICE AND BUILDING DESIGN AWARDS

- Equinox Headquarters:
 - 2021, Winner: Large Corporate Office, NYCxDesign Awards
 - 2020, Finalist: Large Corporate Office, Interior Design Magazine's Best of Year Awards
- 35 Hudson Yards:
 - 2019, Finalist: Hospitality, Urban Land Institute New York Chapter (ULI NY)
 - 2020, Finalist: Luxury Hotel, Hospitality Design Magazine
 - 2021, Platinum Award: Property Development, Office / Work Environment, Outstanding Property Award London (OPAL)
 - 2021, Award of Excellence: Best Tall Mixed-Use Building, Council on Tall Buildings and Urban Habitat (CTBUH)
 - 2021, Audience Vote Award: Best Tall Mixed-Use Building, Council on Tall Buildings and Urban Habitat (CTBUH)



GROUND FLOOR LOBBY WITH BRANDING OPPORTUNITY



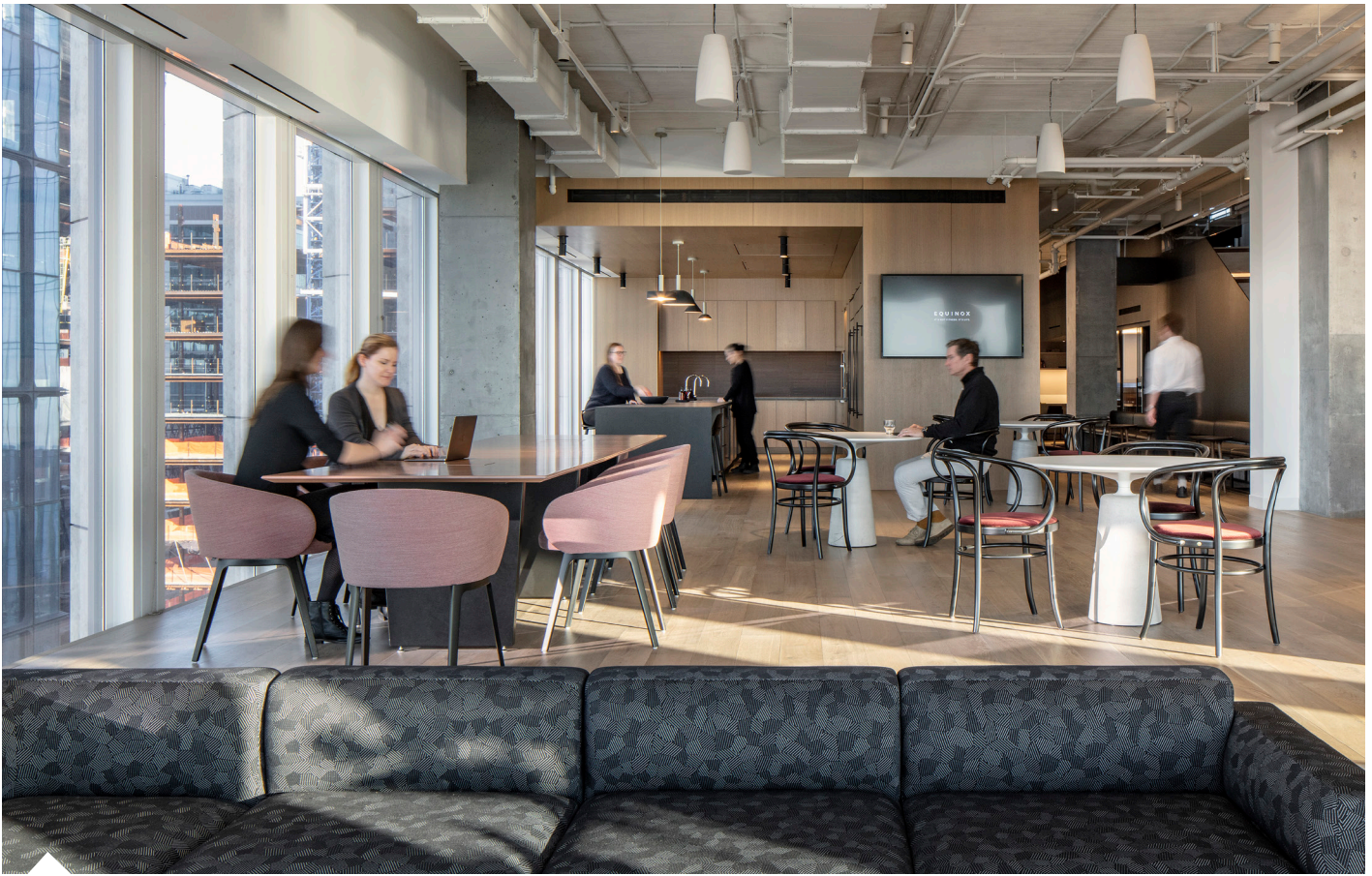
FLEXIBLE OFFICE LAYOUT



SOFT SEATING



BOARD ROOM



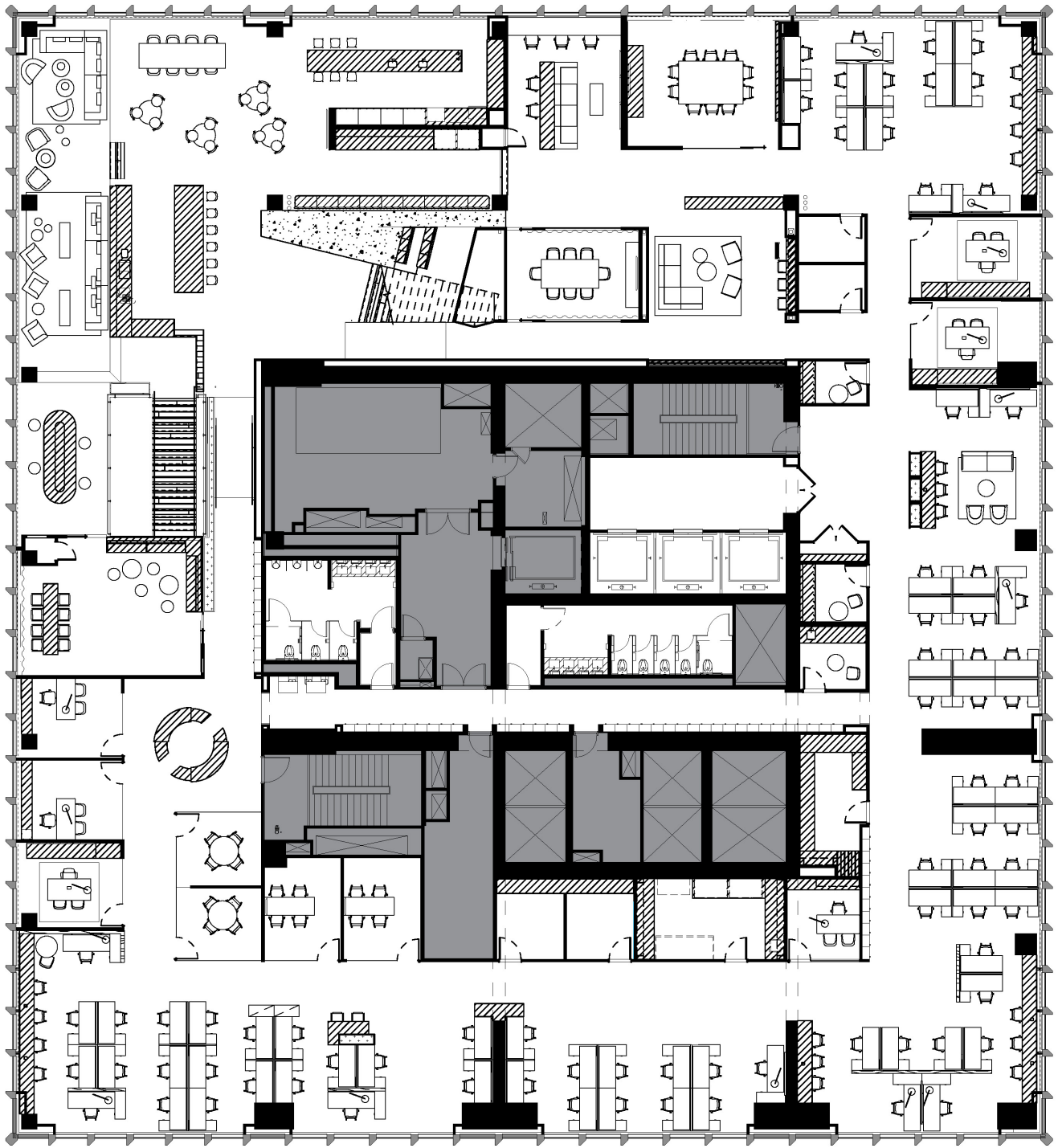
CAFE



INTERCONNECTING STAIRS

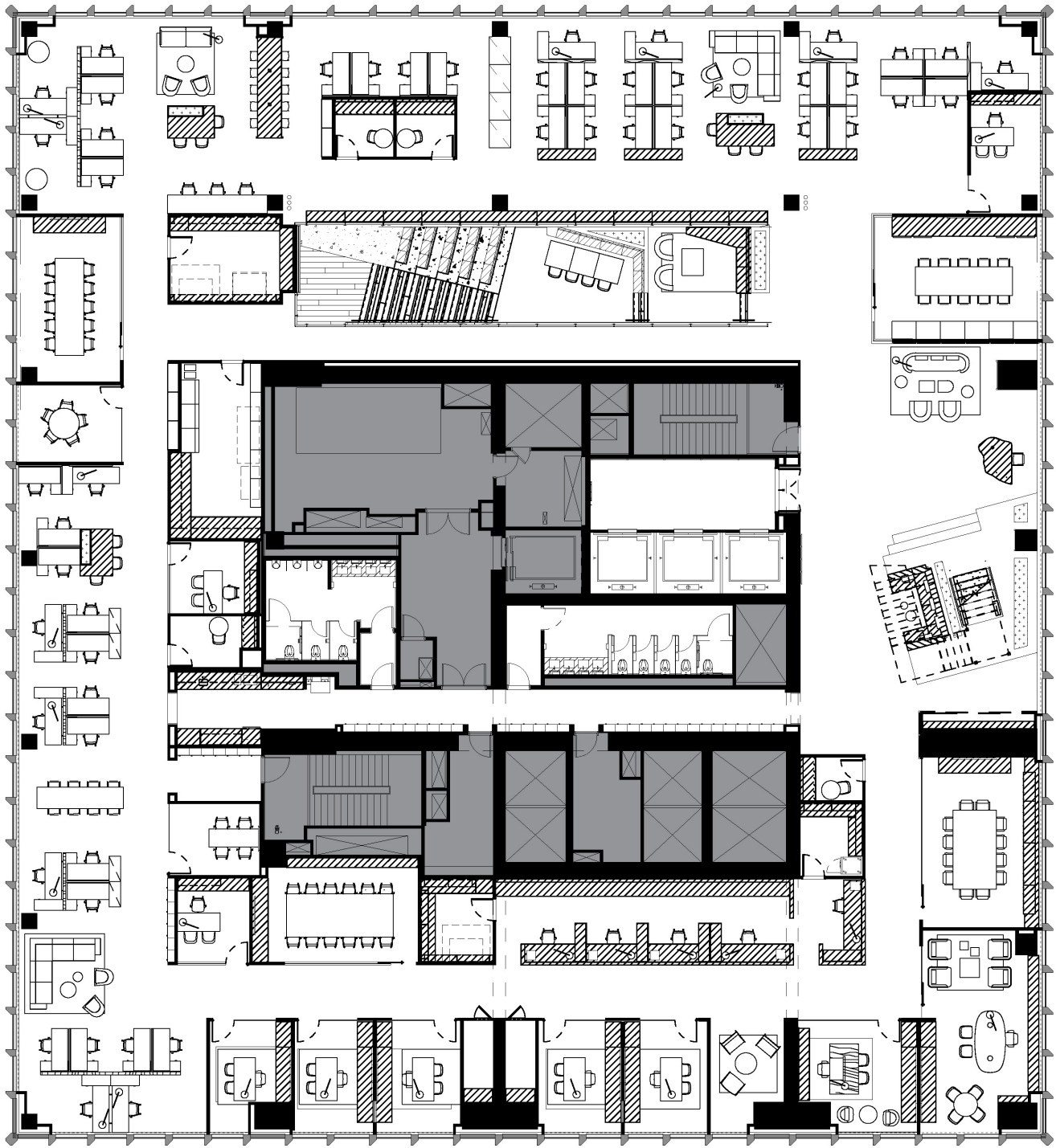
ENTIRE 14TH FLOOR

EXISTING CONDITIONS: 29,275 RSF



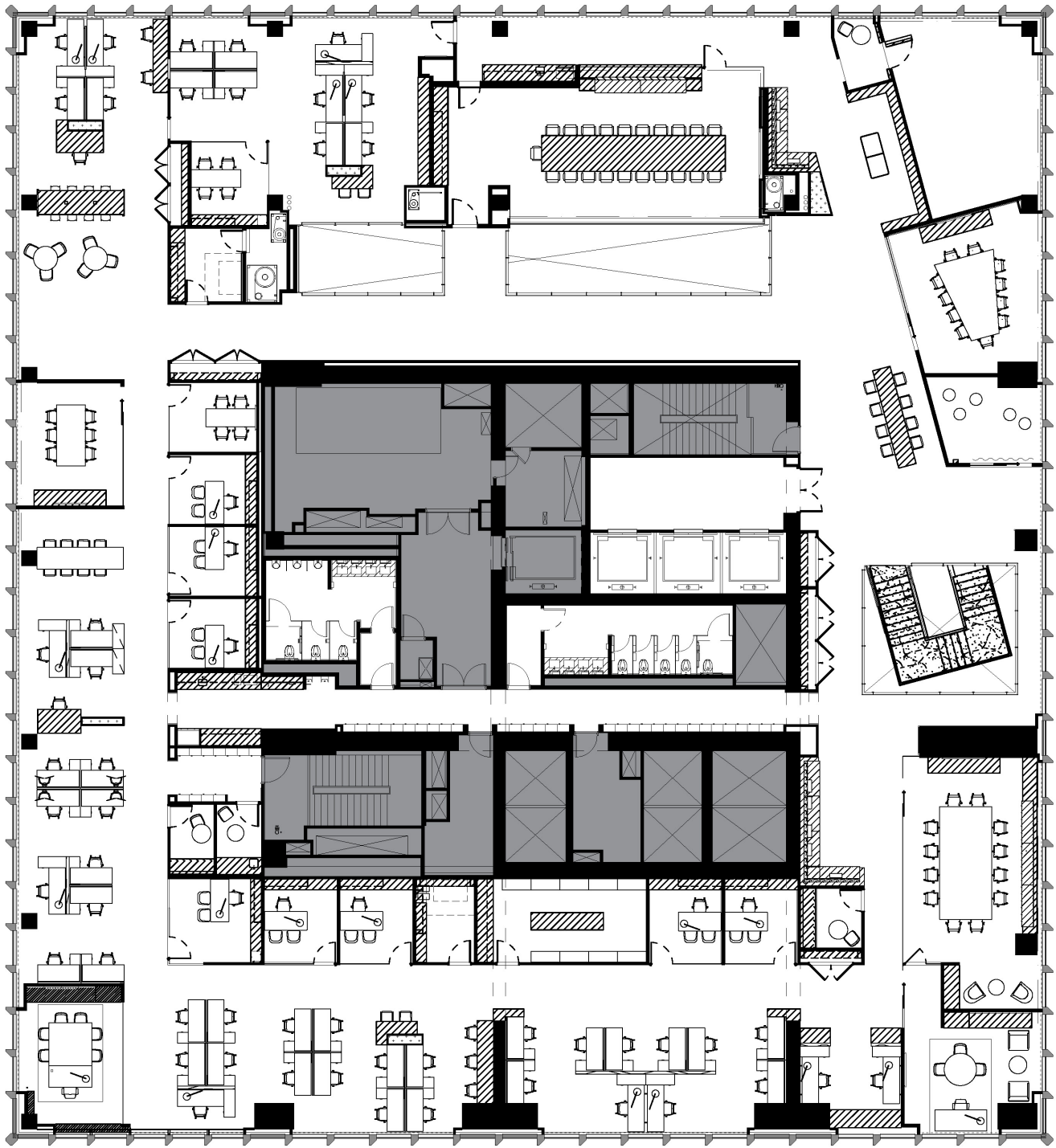
ENTIRE 15TH FLOOR

EXISTING CONDITIONS: 29,275 RSF



ENTIRE 16TH FLOOR

EXISTING CONDITIONS: 29,275 RSF



35 HUDSON YARDS OVERVIEW

35 Hudson Yards is located at the southeast corner of 33rd Street and 11th Avenue. The 1.1-million-square-foot mixed-use tower, designed by David Childs and Skidmore Owings & Merrill, features first class office space, approximately 143 exclusive for-sale residences, an Equinox Hotel® with more than 200 rooms, a world-class 60,000 square foot Equinox® fitness club and spa, and ground floor retail space. 35 Hudson Yards is the definition of a modern skyscraper. The building offers a striking design complemented by its recognizable building façade, adorned in Jura Limestone, imported from Bavaria.

35 Hudson Yards is surrounded by parks with direct access to the High Line and Hudson Park & Boulevard; exciting shopping, dining, nightlife and cultural events in Hudson Yards; and the variety of entertainment options in the surrounding Chelsea and Midtown neighborhoods.

The design of 35 Hudson Yards, the tallest residential tower in the neighborhood, was led by David M. Childs, FAIA, of Skidmore, Owings & Merrill LLP. Arguably the greatest skyscraper architect of our time, SOM is known for an extensive roster of prestigious international projects, including the world's tallest building, the Burj Khalifa in Dubai; One World Trade Center; and Deutsche Bank Center.

