

630 FIFTH AVENUE

PARTIAL 26TH FLOOR

SUBLEASE

**OFFICE SPACE:
3,317 RSF**

POSSESSION: IMMEDIATE

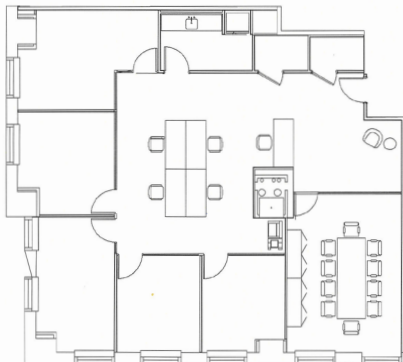
RENT: UPON REQUEST

TERM: JULY 2022

SPACE FEATURES

- Recently pre-built
- Space features 5 offices, 1 conference room & an open work area
- Full wet pantry, storage & reception area
- Southwest corner with views of Rockefeller Plaza and the Rink

FLOOR PLAN:



630 FIFTH AVENUE

PARTIAL 26TH FLOOR

SUBLEASE

