



51st Floor View

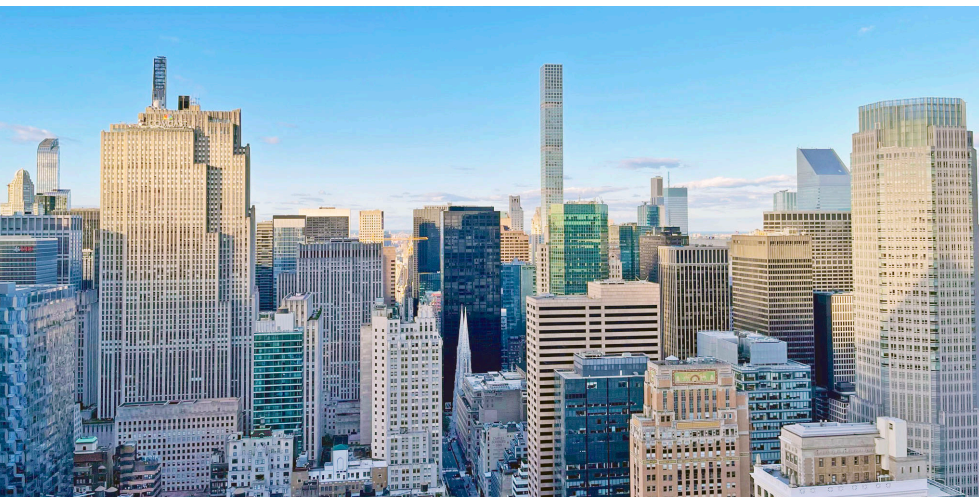
500
FIFTH
BRYANT PARK

OFFICE OPPORTUNITY
PARTIAL 51ST FLOOR - 3,157 RSF

Possession: Immediate

Term: Negotiable

Rent: Upon Request





SPACE INFORMATION

PARTIAL 51ST FLOOR - 3,157 RSF

Features:

- Outstanding light and views
- On Bryant Park
- Bike room and shower available
- Recently renovated suite
- 4 offices, conference room, open area and pantry
- Waling distance to Grand Central, Penn Station and Port Authority
- Close proximity to the major subway lines **4 5 6 7 B D F M N Q R S**

NY TRANSIT
The Way To Go.



Long Island
Rail Road



Metro-North
Railroad

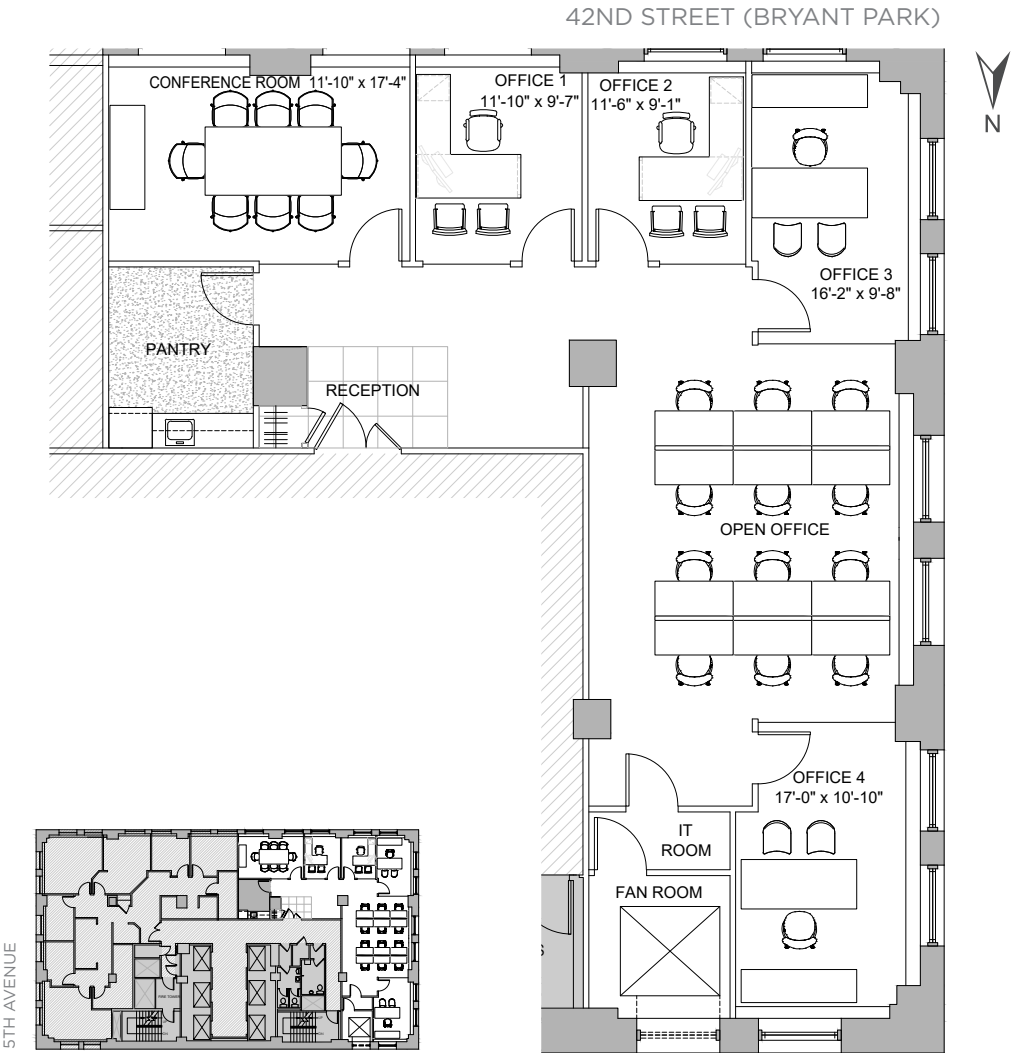


FLOOR PLAN

PARTIAL 51ST FLOOR - 3,157 RSF

AS-BUILT

Space Summary	
Offices	4
Open Office	12
Reception	1
Total Head Count	16
Conference Room	1
Pantry	1
IT Room	1
Closet	1



500
FIFTH
BRYANT PARK

NEIGHBORHOOD/LOCATION

