



635 MADISON AVENUE

PARTIAL 12TH
3,279 RSF

***Built medical space
Immediately Available**

635 MADISON AVENUE

- Boutique medical building
- Accessible to major hospitals & public transportation
- Signage & identity can be provided for a large block medical tenant
- Built medical space and whiteboxed full floors available for immediate occupancy

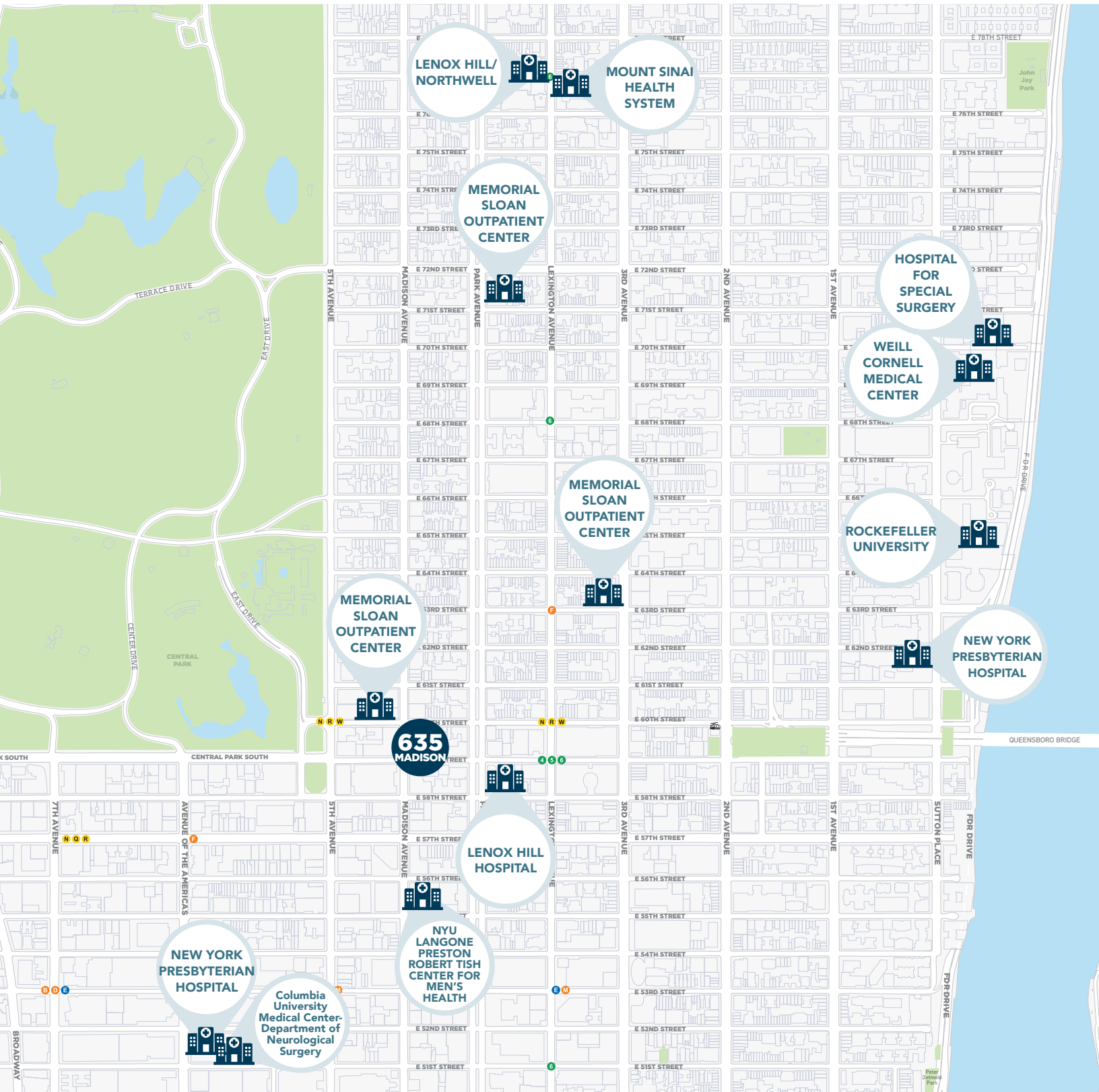
PARTIAL 12TH
3,279 RSF

*Built medical space
Immediately Available



635 MADISON AVENUE

Selected Hospitals / Medical Providers



635 MADISON AVENUE

FLOOR 19

ENTIRE 18TH FLOOR | AVAILABLE
4,806 RSF

FLOOR 17

ENTIRE 16TH FLOOR | AVAILABLE
6,217 RSF

ENTIRE 15TH FLOOR | AVAILABLE
6,277 RSF

FLOOR 14

FLOOR 13

PARTIAL 12TH FLOOR | AVAILABLE
3,279 RSF

PARTIAL 11TH FLOOR | AVAILABLE
882 RSF

FLOOR 10

FLOOR 9

FLOOR 8

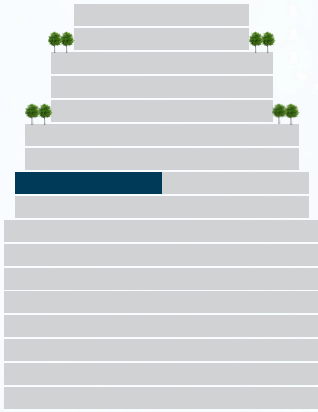
FLOOR 7

FLOOR 6

ENTIRE 5TH FLOOR | AVAILABLE
11,303 RSF

FLOOR 4

FLOOR 3



3,279 RSF

BUILT MEDICAL SPACE

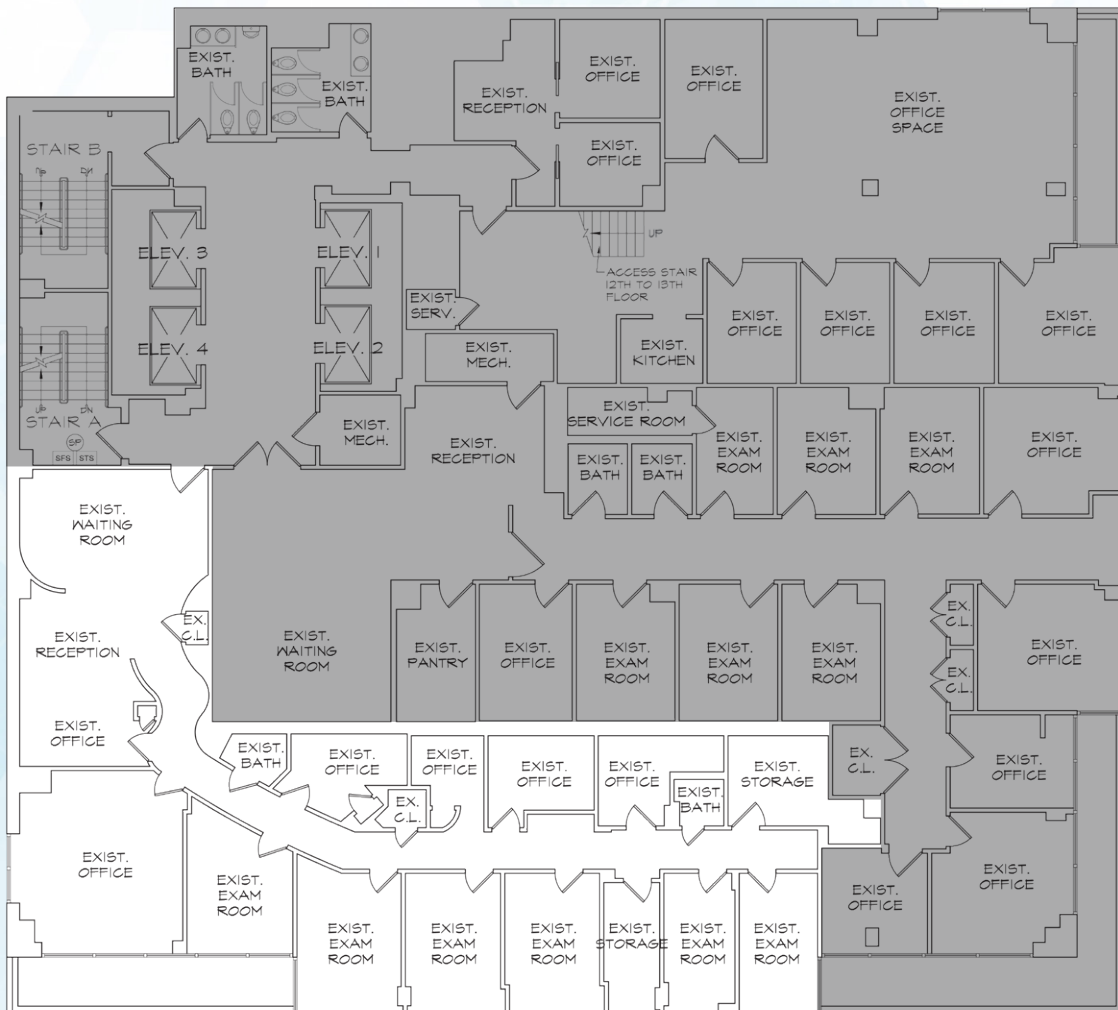
- Built medical or office space
- 6 fully equipped dental rooms
- Small in-suite bathroom
- Staff room
- Reception

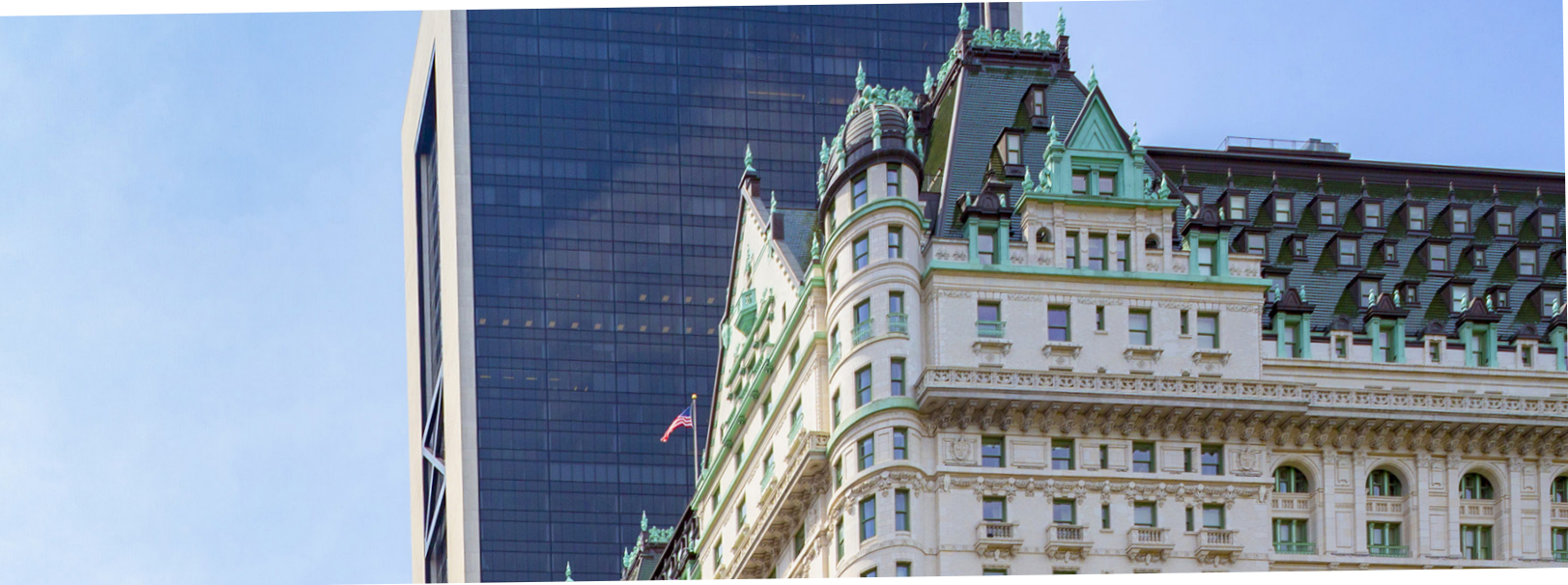
POSSESSION

Immediate

RENT

Upon request





635
MADISON AVENUE

