



Bryant Park



Madison Square Park



Empire State Building



Penn Station



Lobby View

Centrally Located.  
Great Transit Access.  
NoMad/Murray Hill.

**152 Madison Avenue**

Northwest Corner of East 32nd Street







Views from Tower Level Floors

Rent	Possession
------	------------

Entire 20th Floor:	3,340 RSF	Upon Req.	Immediate
--------------------	-----------	-----------	-----------

- Move-in ready creative space. Full tower floor. Terrific light and views.

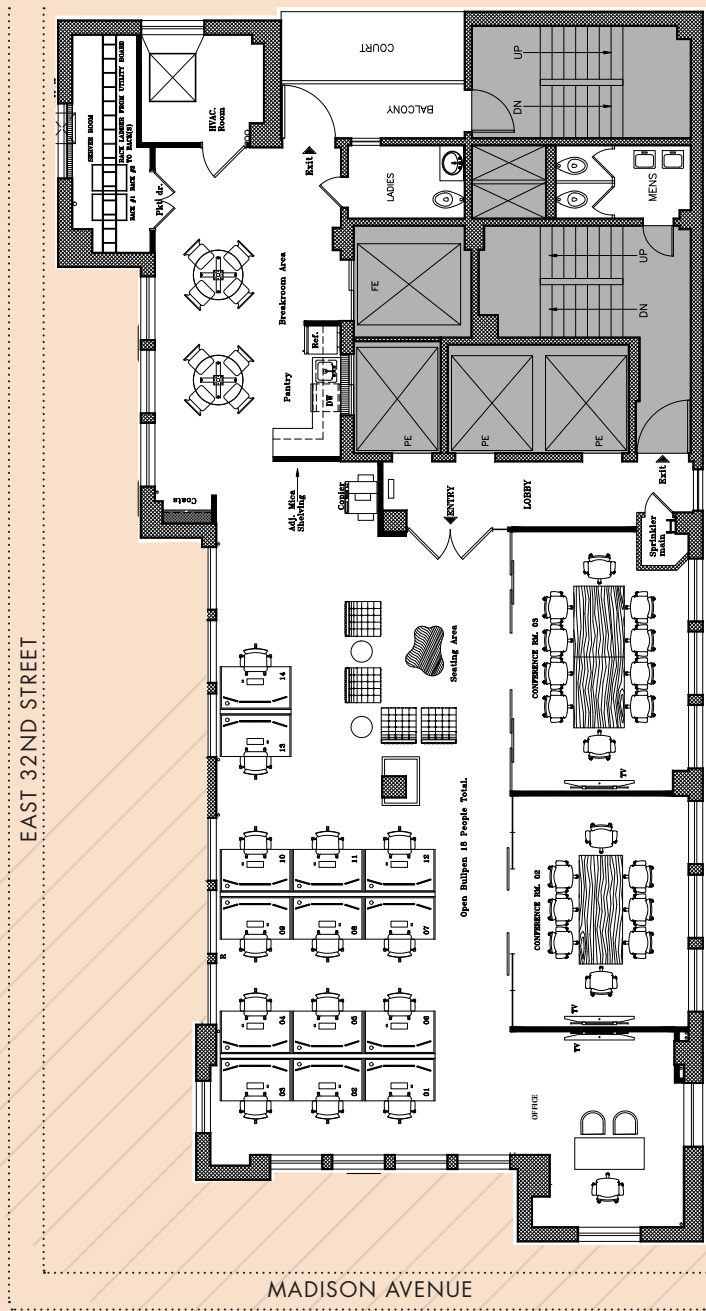
- Centrally located between Bryant Park and Madison Square Park

- Accessible via **B D F M 4 5 6 7 N Q R W S** subways and Penn Station transportation hub's **1 2 3 A C E** **MTA** Long Island Rail Road **NJ TRANSIT**

- Art deco detailed building, attended lobby and 24/7 access



ENTIRE 20TH FLOOR - 3,340 RSF  
AS-BUILT (FURNITURE SHOWN FOR DEMONSTRATION PURPOSES ONLY)



(for descriptive purposes only; not to scale.)



Existing Conditions





ENTIRE 20TH FLOOR - 3,340 RSF  
EXISTING CONDITIONS



