

# 150 East 58<sup>th</sup> Street

Between Third & Lexington Avenues


PARTIAL 16<sup>th</sup> FLOOR: 3,371 RSF

OFFICE SPACE FOR SUBLEASE



 **ASKING RENT**  
Upon Request

 **POSSESSION**  
Immediate

 **TERM**

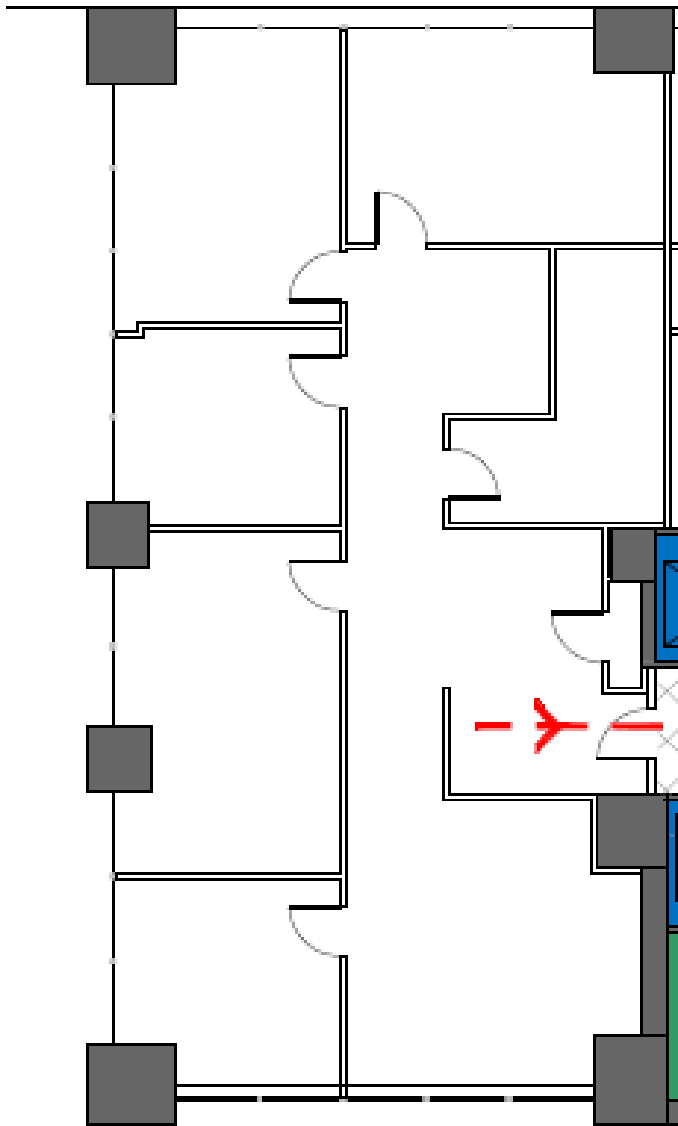
- Through 2/28/2024
- Longer Term Direct Lease Available

# 150 East 58<sup>th</sup> Street

Between Third & Lexington Avenues

PARTIAL 16<sup>th</sup> FLOOR: 3,371 RSF

OFFICE SPACE FOR SUBLEASE



## SPACE FEATURES

- 4 offices
- 1 conference room
- Open area with workstations
- Pantry
- Reception area
- Fully furnished and wired
- Direct elevator presence
- Creditworthy Sublandlord
- Good light and views

# 150 East 58<sup>th</sup> Street

Between Third & Lexington Avenues

PARTIAL 16<sup>th</sup> FLOOR: 3,371 RSF

OFFICE SPACE FOR SUBLEASE



# 150 East 58<sup>th</sup> Street

Between Third & Lexington Avenues

PARTIAL 16<sup>th</sup> FLOOR: 3,371 RSF

OFFICE SPACE FOR SUBLEASE



## Transit/Subway

Penn Station (34 <sup>th</sup> St)	19 mins
Grand Central (42 <sup>nd</sup> St)	6 mins



# 150 East 58<sup>th</sup> Street

Between Third & Lexington Avenues

PARTIAL 16<sup>th</sup> FLOOR: 3,371 RSF

OFFICE SPACE FOR SUBLEASE

