

1 UNION SQUARE WEST

Corner of 14th Street & Union Square West

Partial 7th Fl, Corner Office

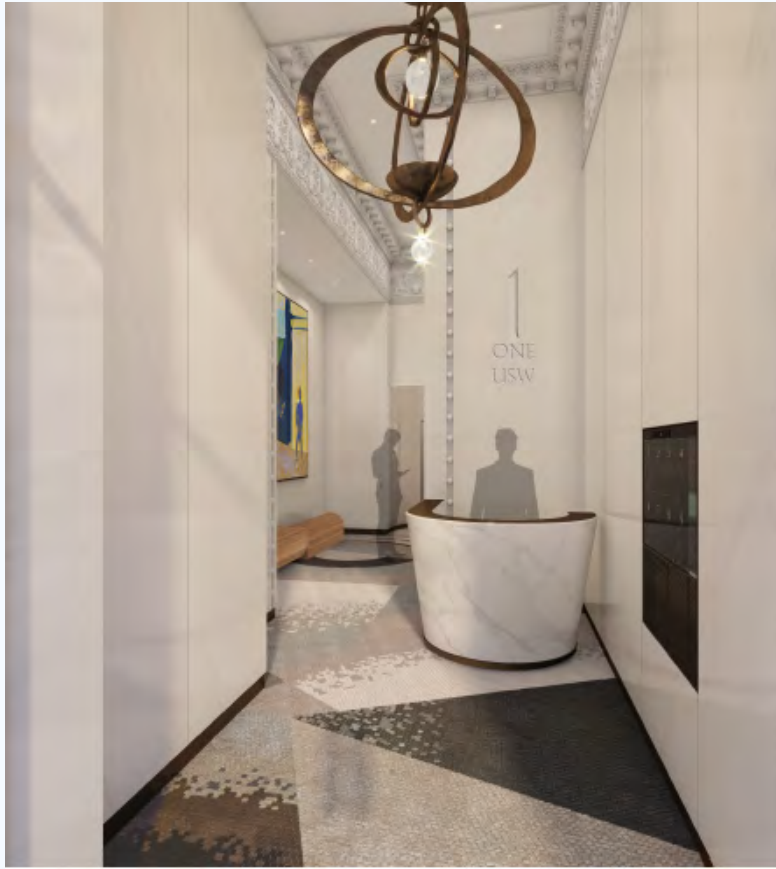


Size: Approx. 3,541 RSF

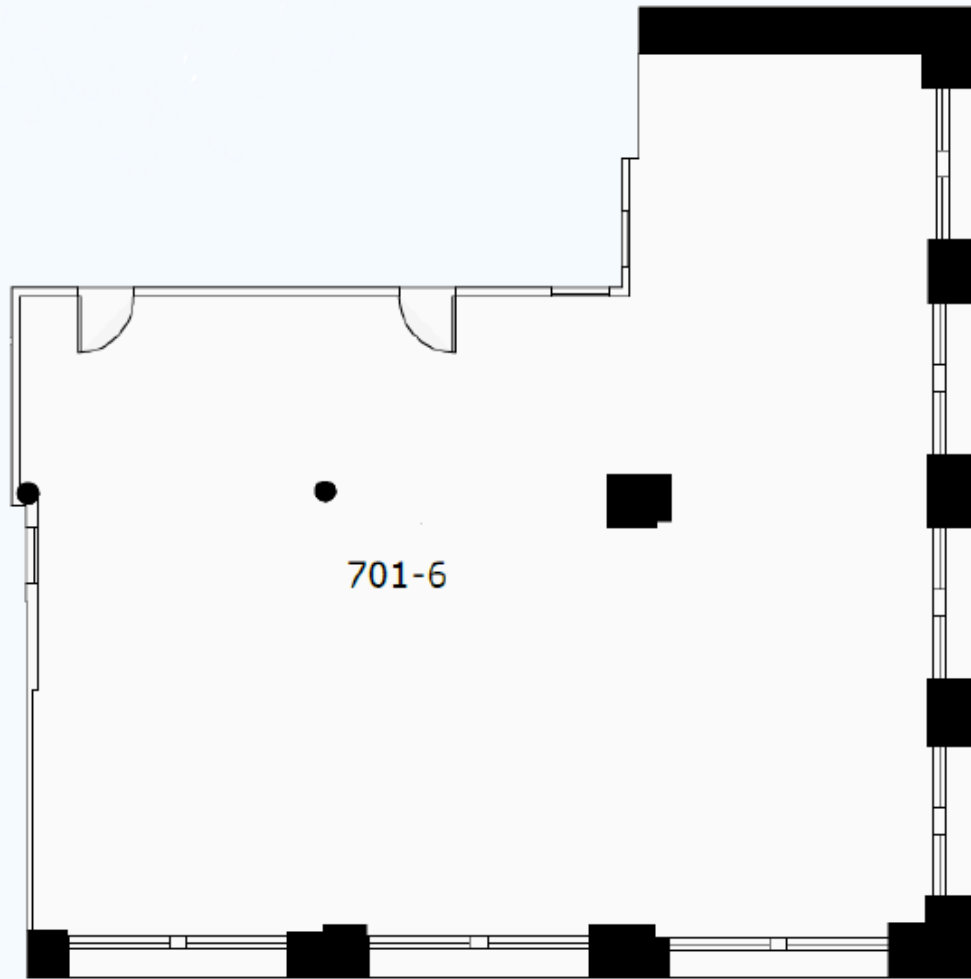
- Overlooking Union Square Park
- 2 Built Conference Rooms
- High Ceilings
- Hardwood Floors
- New Windows Throughout
- Flexible Lease Terms
- Rent Upon Request
- Newly renovated lobby (attended)
- Steps from the 4,5,6,N,Q,R,W,L,PATH
- Uniquely positioned in the epicenter of Midtown South
- Union Square Farmer's Market



LOBBY RENOVATION (to be completed in Q4, 2021)



*Final renovation may differ from rendering



East 14th Street

Union Square West

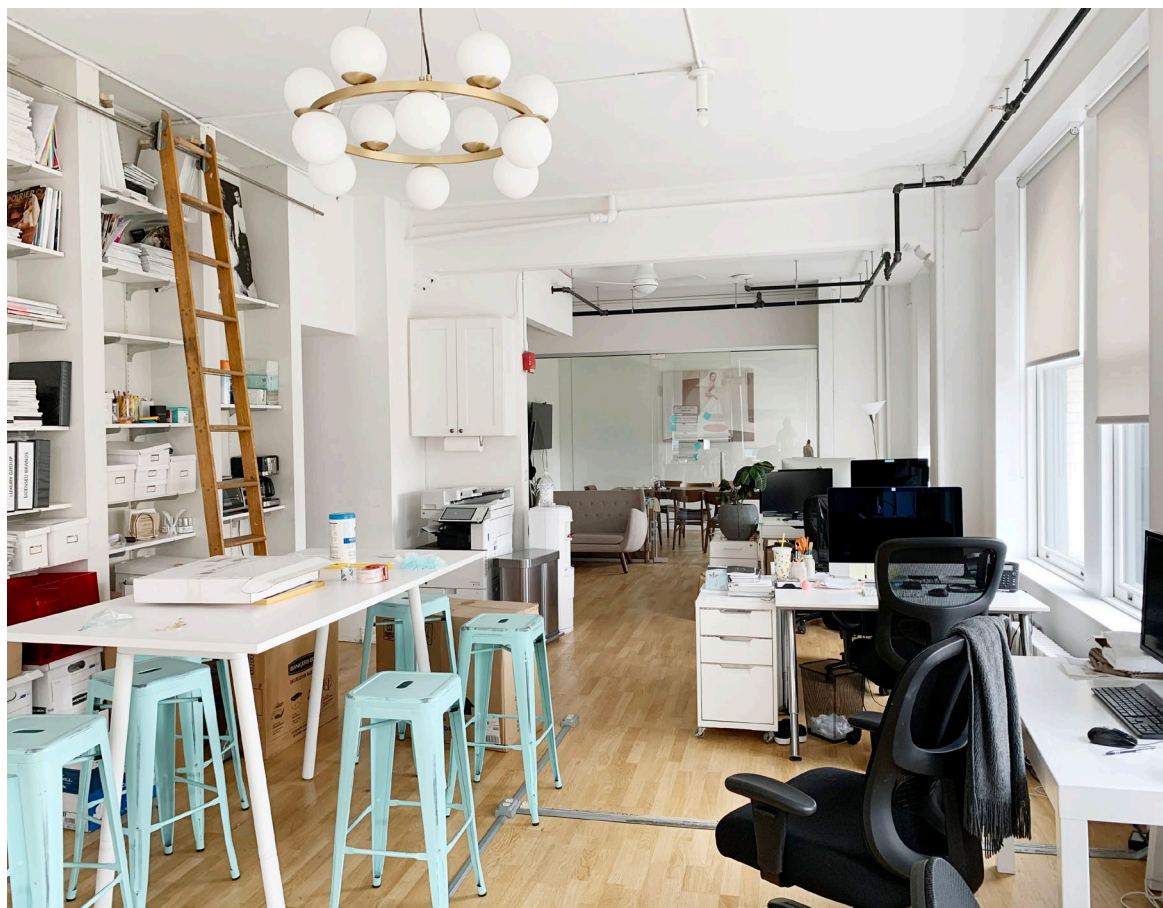
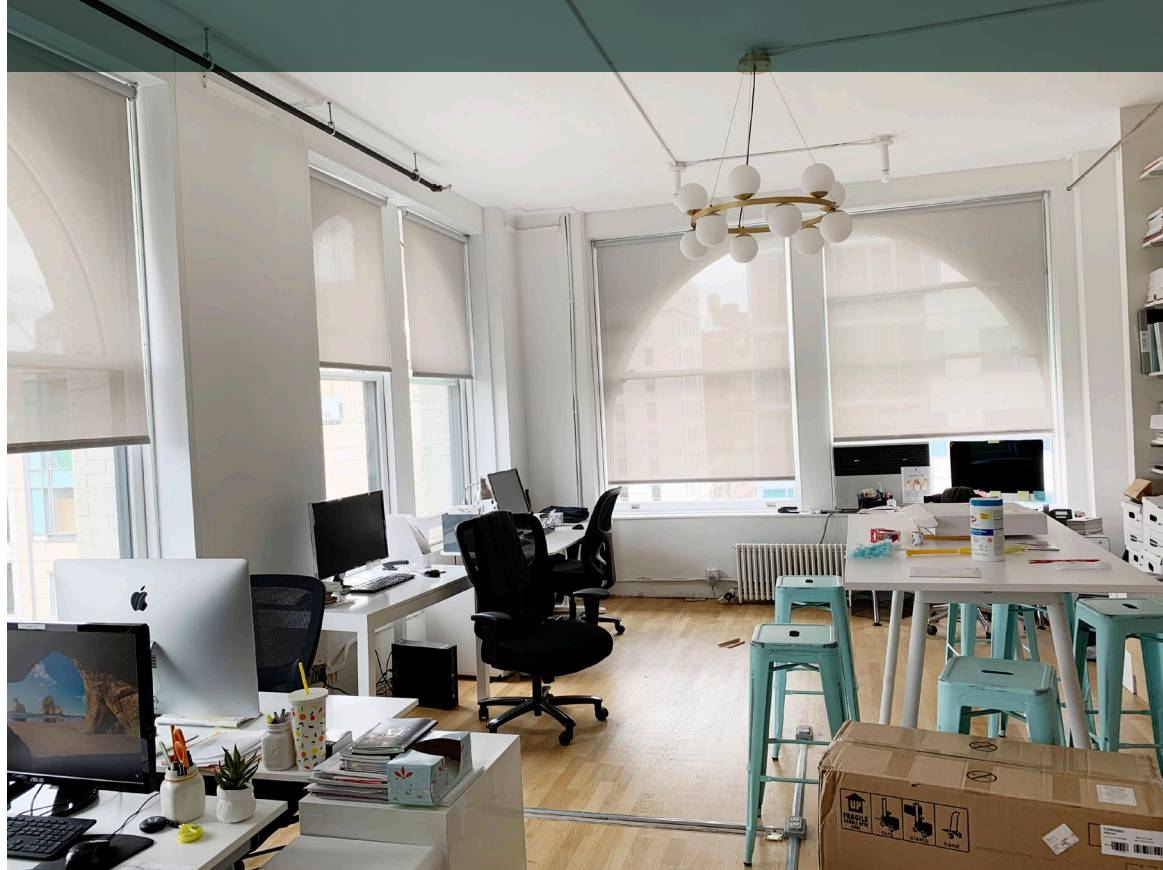




1

UNION SQUARE

WEST



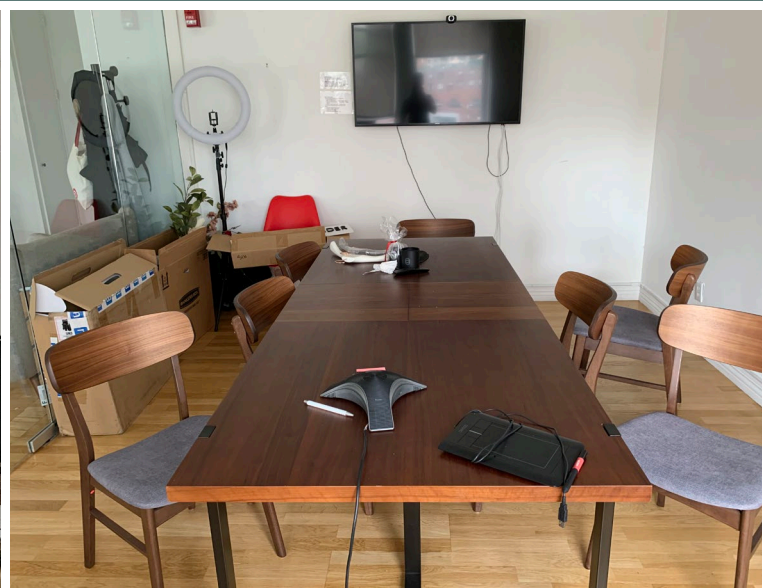
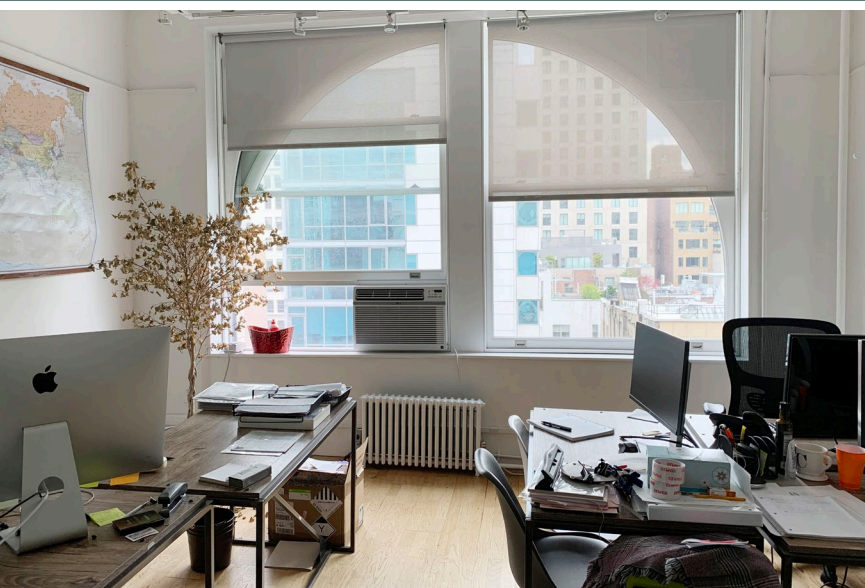


1

UNION SQUARE WEST

SPACE FEATURES

- 2 Conference Rooms
- Pantry
- Open Area for 15-20
- Overlooking Union Square
- 24/7 building access
- Immediate access to
4 5 6 N Q R L trains
- 9+ Acres of Open Space
 at Union Square Park

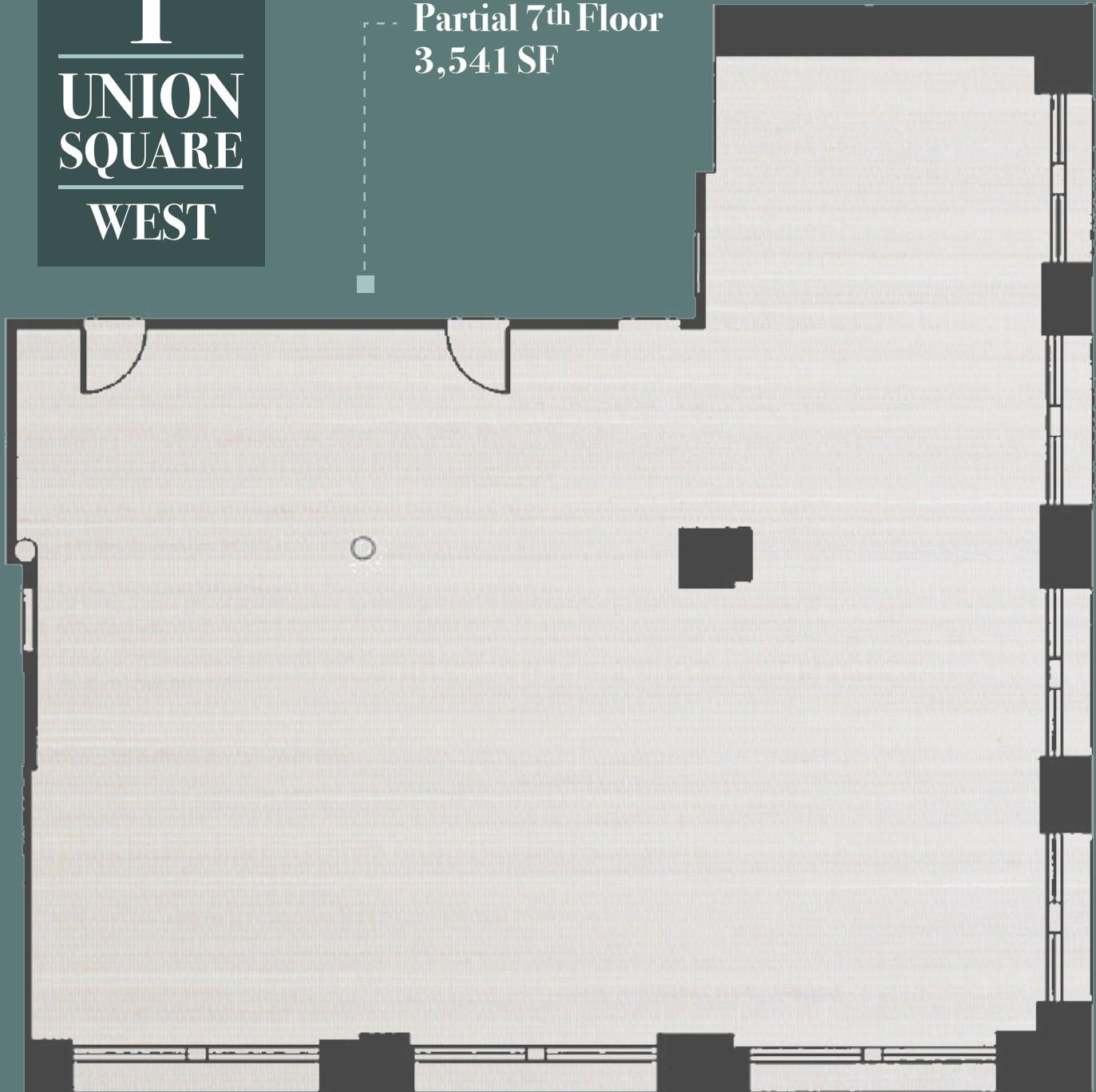




1

UNION SQUARE WEST

Partial 7th Floor
3,541 SF



UNION SQUARE WEST

14TH STREET



1

UNION
SQUARE
WEST

