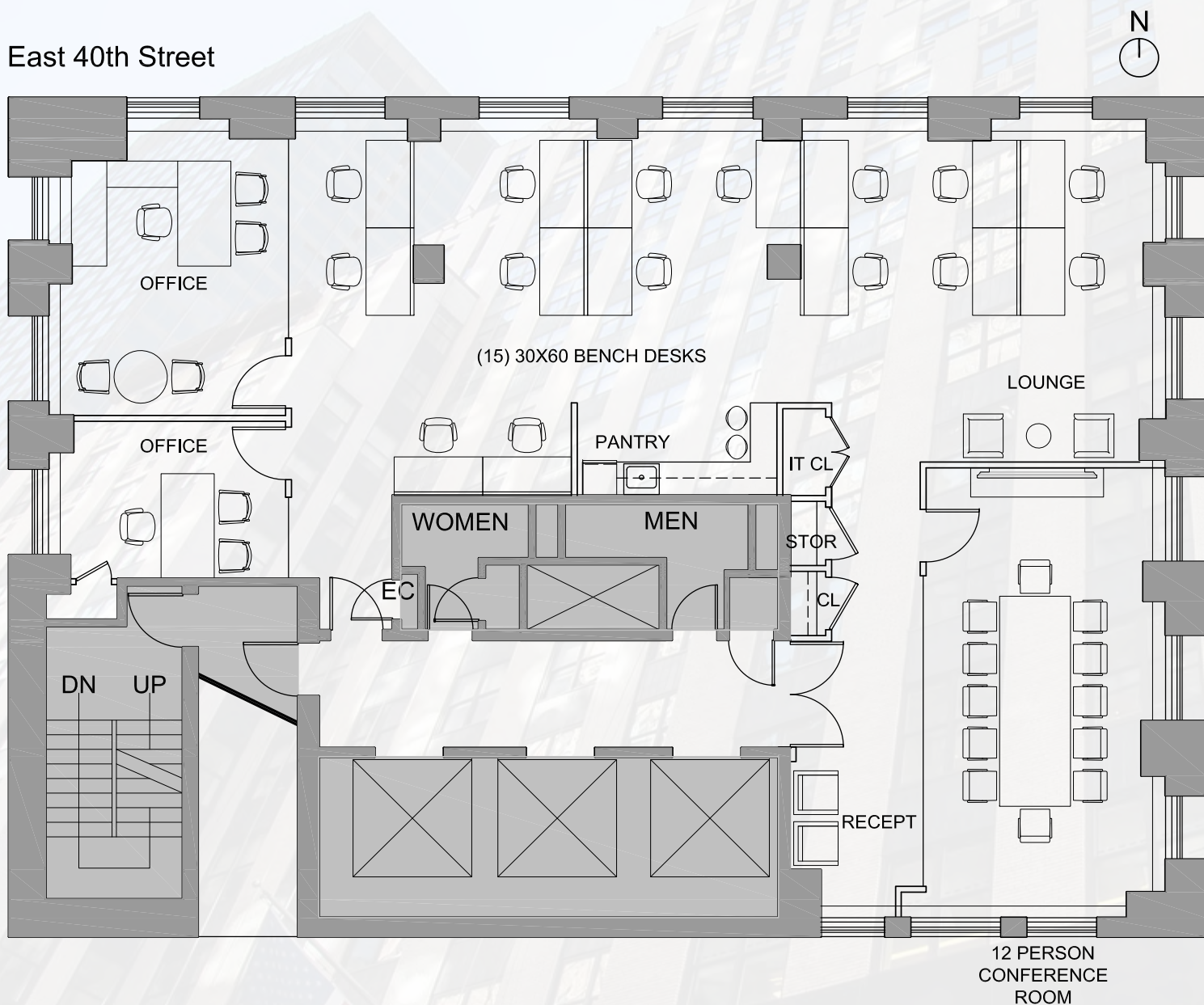


# 275 MADISON AVENUE

ENTIRE 34<sup>TH</sup> FLOOR: 3,570 RSF

East 40th Street

Madison Avenue





## **PREMISES**

Entire 34<sup>th</sup> Floor - 3,570 RSF

## **TERM**

Negotiable

## **AVAILABILITY**

Immediate

## **COMMENTS**

- Boutique tower floor
- Tremendous natural light and city views.
- Fully furnished, move in ready
- Two (2) glass fronted windowed offices
- Tenant controlled HVAC
- Glass fronted conference room with twelve (12) person table and chairs
- Open bullpen with eight (8) workstations and four (4) person meeting table
- Cleaning Included







# 275 MADISON AVENUE

ENTIRE 34<sup>th</sup> FLOOR: 3,570 RSF

