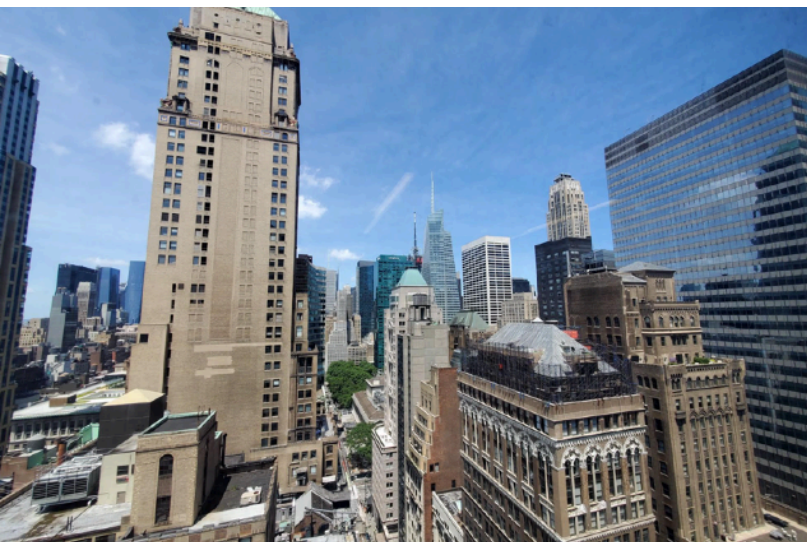


## 275 Madison Avenue

Corner of 40th Street

## Move-in Ready Full Floor

Entire 26th Floor - 3,581 RSF



**Asking Rent:** Upon Request

---

**Possession:** Immediate

---

**Term:** Through April 2025

---

### Space Details:

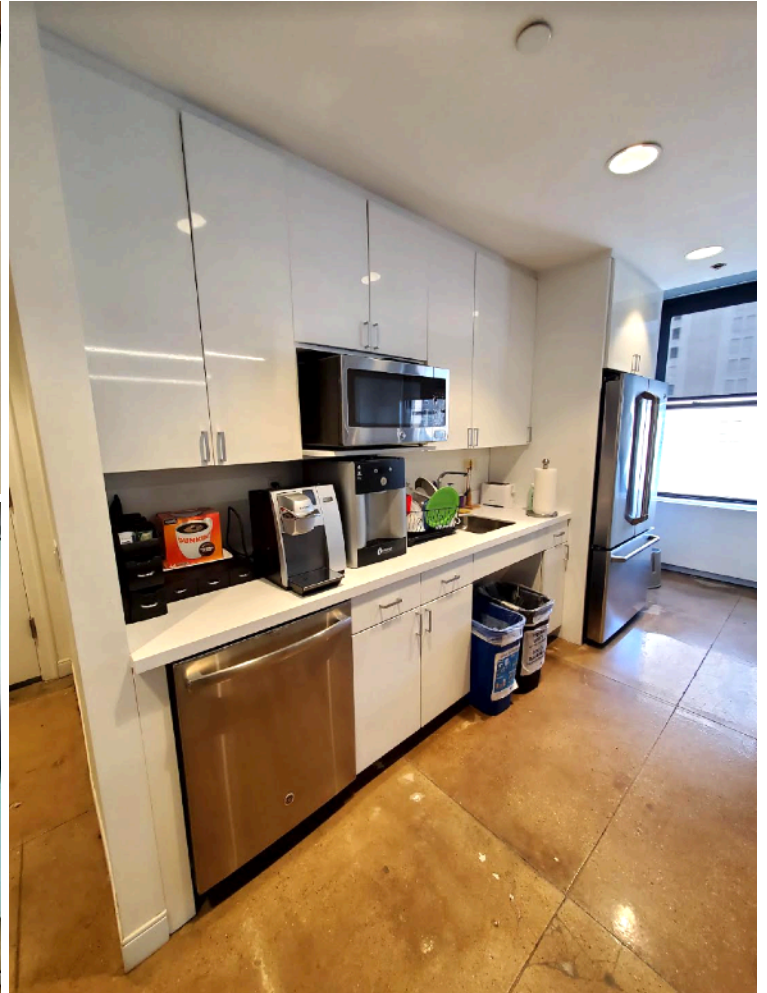
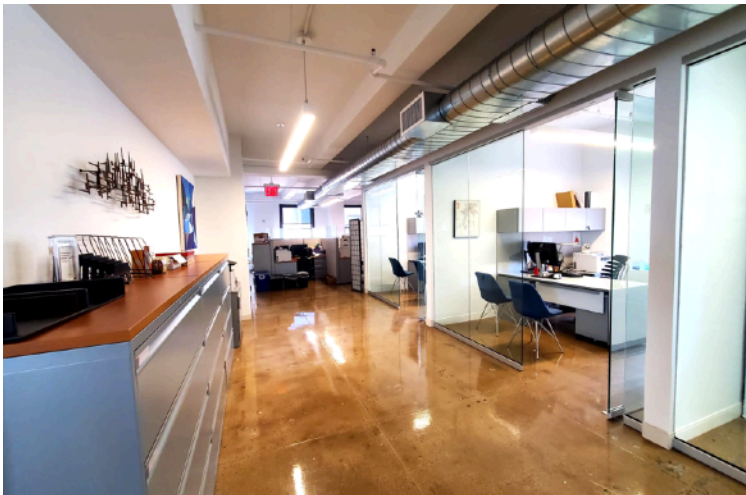
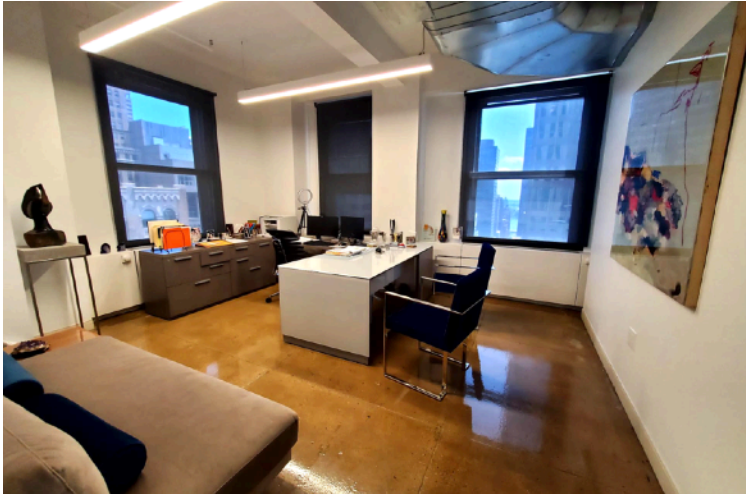
- Full floor featuring polished concrete floors, open ceilings, great natural light, and spectacular views
  - 1 executive office, 4 glass offices, 1 glass conference room, open area for 6 workstations (2 more can easily be added), 2 private restrooms
  - Wet pantry
  - Move-in ready, inclusive of select furniture
-

# 275 Madison Avenue

Corner of 40th Street

# Move-in Ready Full Floor

Entire 26th Floor - 3,581 RSF



## 275 Madison Avenue

Corner of 40th Street

## Move-in Ready Full Floor

Entire 26th Floor - 3,581 RSF



**275 Madison Avenue**  
Corner of 40th Street

**Move-in Ready Full Floor**  
Entire 26th Floor - 3,581 RSF

