

821 Broadway

Gramercy Park, New York
Northwest corner of 12th Street

Building Overview

Signature Union Square building with unique wraparound windows. Situated on the Northwest corner of 12th and Broadway. Beaux Arts limestone and brick building with loft spaces.

Building Highlights

- 11-story, 35,561 SF office building
 - Blocks from Union Square Station
 - Some of the best restaurants/bars located nearby
 - Tenant controlled A/C
 - Newly restored facade, completed September 2011.
 - Floors 7-11 with north windows in addition to south and east.
-

Lease Term

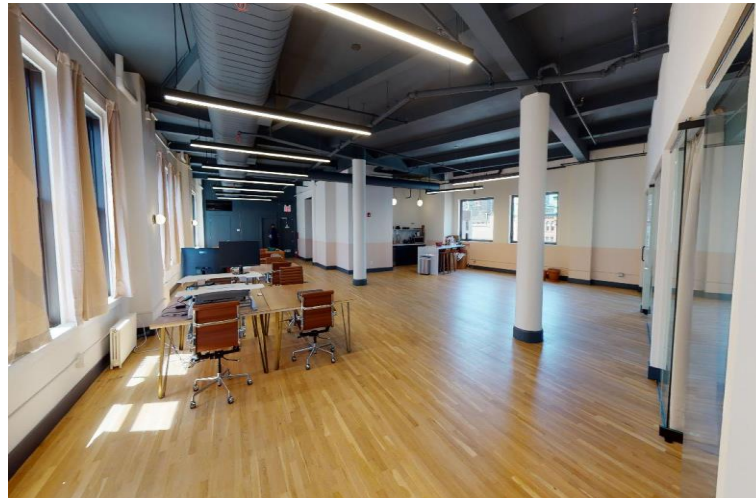
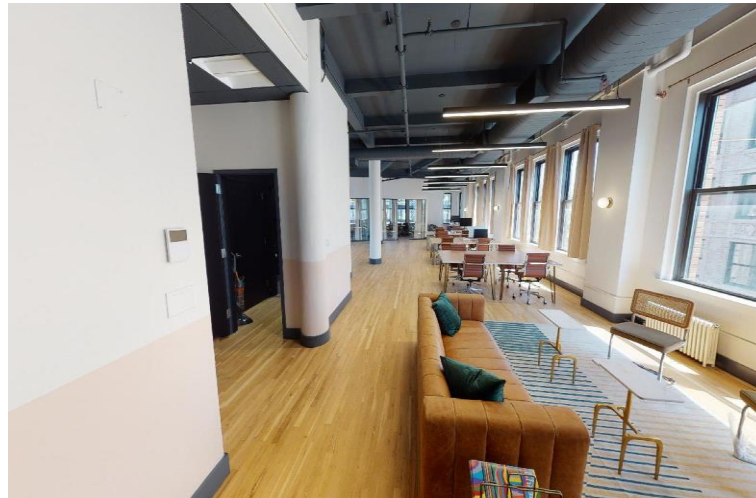
Sublease through December, 2026



Space Description

The entire 8th floor is a high-end custom buildout with hardwood floors, exposed ceilings, custom pantry and 9-foot glass office / meeting rooms.

[View Virtual Tour](#)



Floor Plan

\$24,000 / month

821 Broadway

Entire 8th Floor

3,713 SF

Open Seating

Workstations	15-20
Reception Area	1

Collaboration Space

Office/Meeting Rooms	3
Lounge Area	1

Support

Wet Pantry	1
Private Restrooms	2

