

271 MADISON AVENUE

Between 39th and 40th Streets



Partial 15th Floor

- 3,790 RSF
- Six (6) windowed offices
- Windowed conference room
- Bullpen area for 10 people
- Storage, pantry, and IT room
- Tenant controlled A/C
- Great light, views and fresh air
- Move in condition

Rent: Upon Request

Terms: 3 – 10 Years

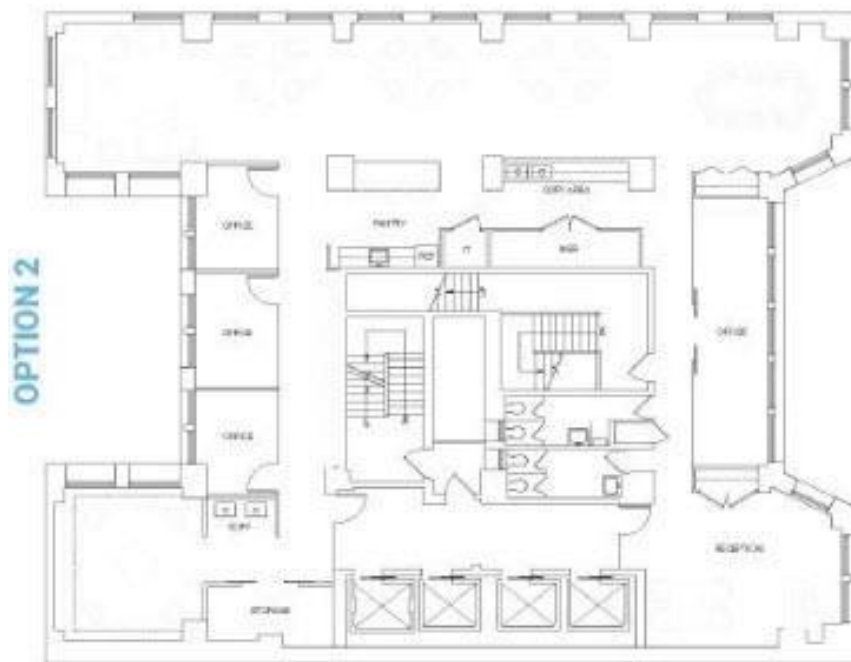
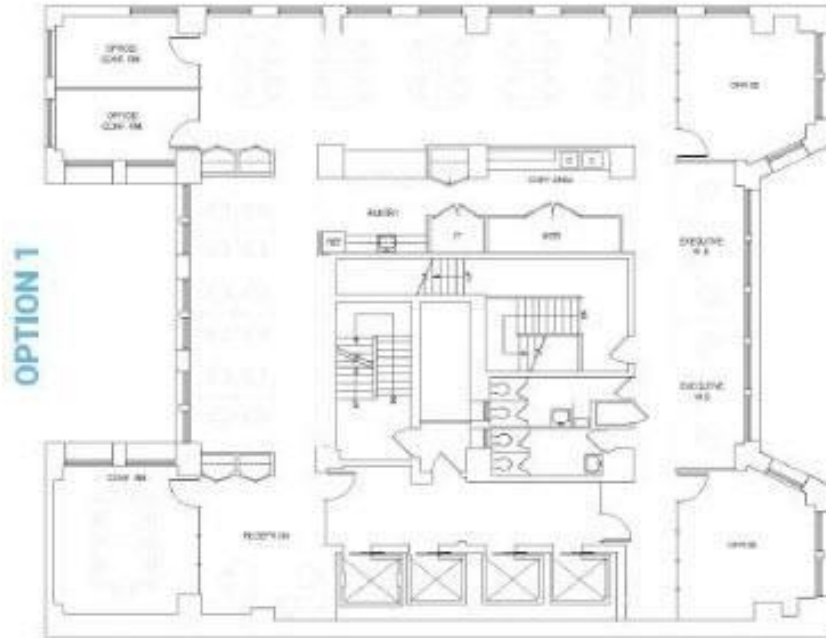
Possession: Immediate

Building Features

- Abundant Fresh Air
- New Operable Windows on 3 sides
- High Ceilings
- 24/7 Building Access
- Attended Lobby
- New Hallways
- Three Blocks from Grand Central Station

271 MADISON AVENUE

Between 39th and 40th Streets



271 MADISON AVENUE

Between 39th and 40th Streets

