

Bryant Park
Office Condominiums at
32w39
NEW YORK, NY

Adjacent to Amazon's
Fifth Avenue Headquarters





Reception area on the 5th Floor

Overview

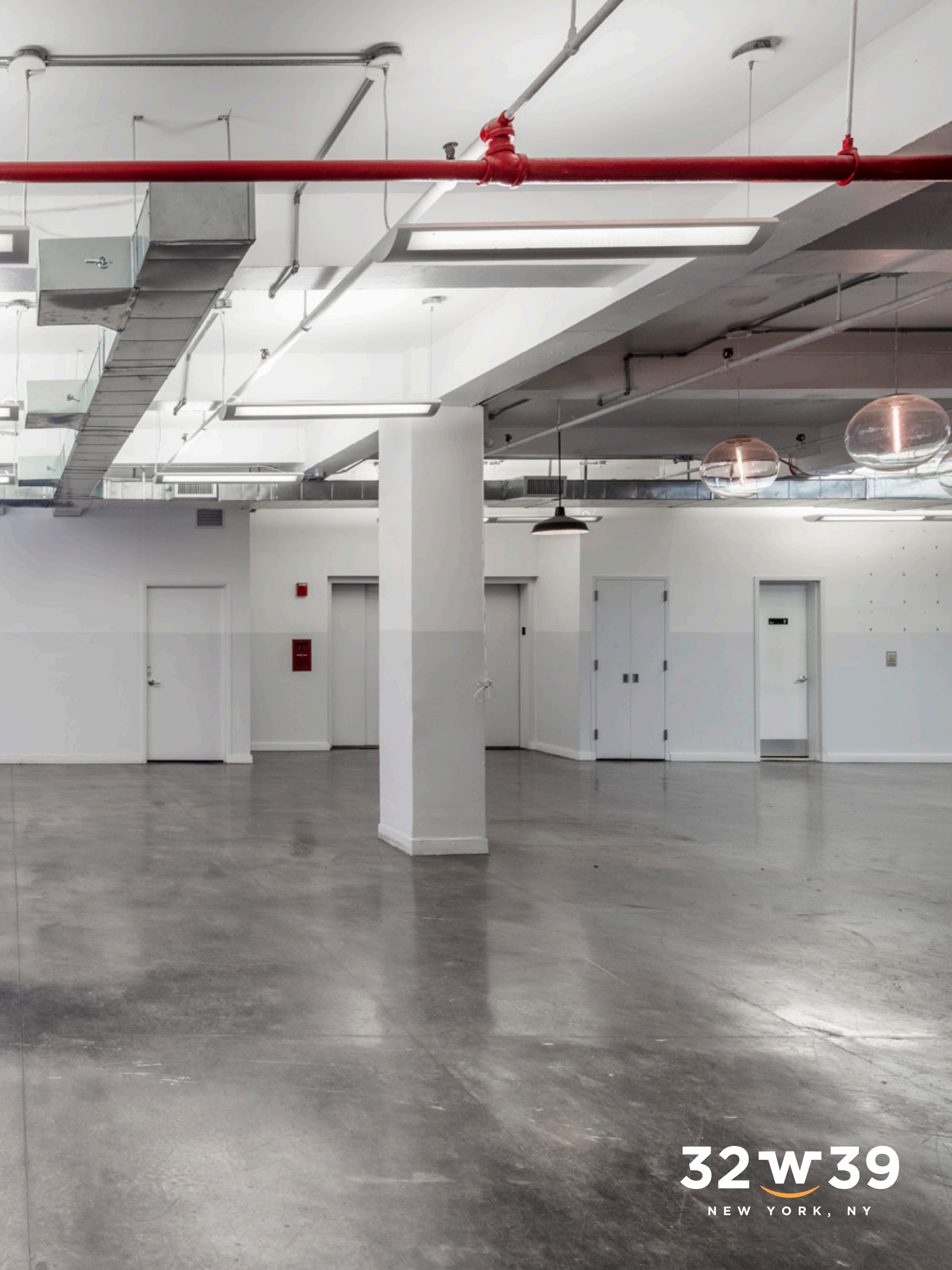
Bryant Park Office Condominiums

The office condominiums at 32 West 39th Street are in a unique office building in the Bryant Park submarket adjacent to Amazon's Fifth Avenue Headquarters. Located between Fifth and Sixth Avenues, the 16-story office building sits in-between Grand Central and Penn station.

Building highlights include:

- The 87,072-square-foot building offers full floors from 3,970 RSF to 8,371 RSF and large contiguous blocks of up to 50,000 RSF
- High ceilings and three sides of large windows, offering bright natural light
- Unique building features including potential roof deck on the 5th floor
- Well-maintained, high-quality building with recently restored façade, redesigned lobby and elevator upgrades





32w39
NEW YORK, NY

Accessibility and Location

Sitting between Grand Central and Penn Station, 32 West 39th Street provides ample connections to Metro North, Amtrak, LIRR and New Jersey Transit. Additionally, 10+ different subway lines including the – **B D F M N Q R W** and **4 5 6**.







Dramatic view of the Midtown skyline from 32 West 39th Street



32w39
NEW YORK, NY

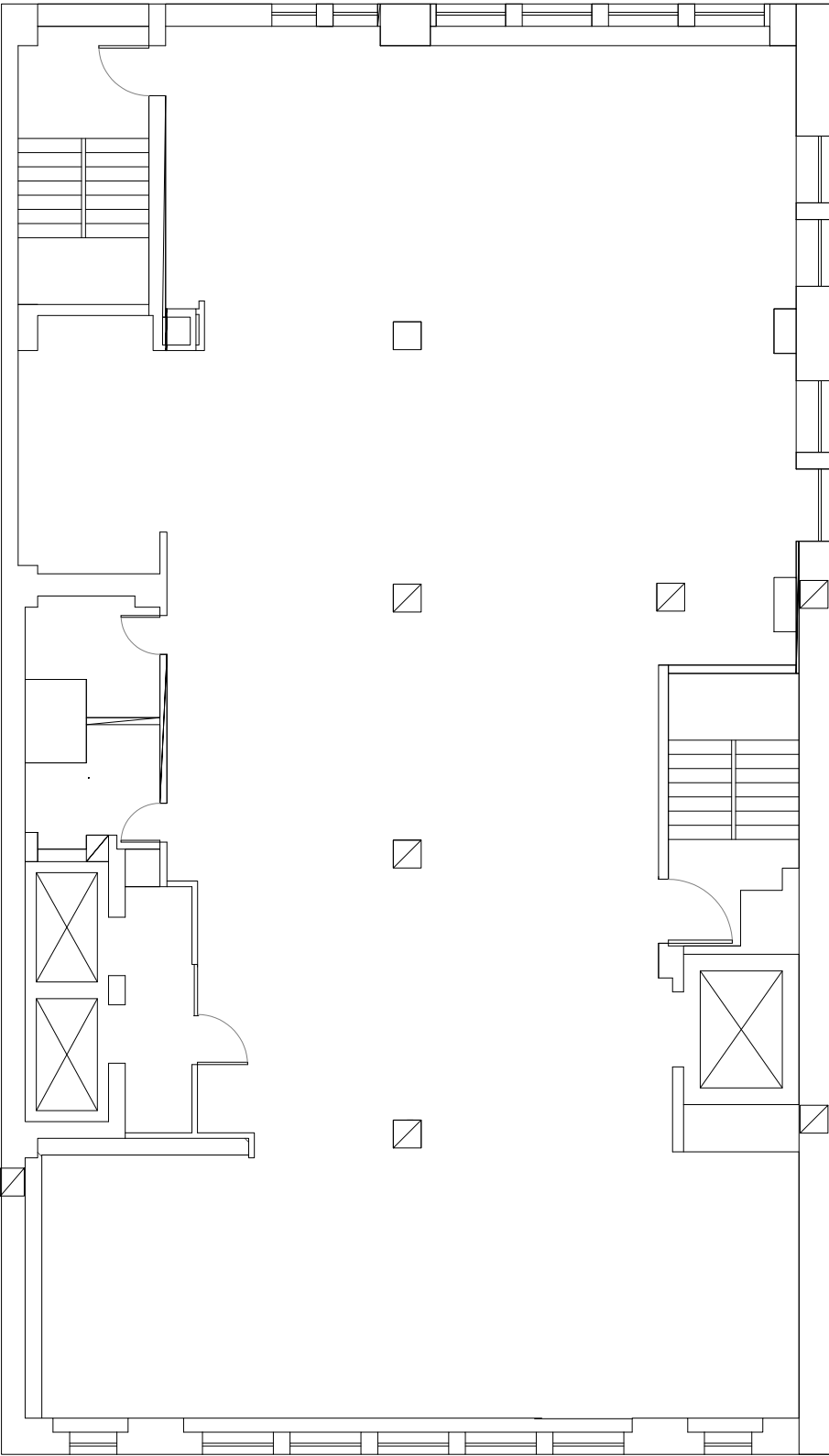






32w39
NEW YORK, NY

Typical Floorplan



Stacking Plan

Floor 16	3,970 RSF
Floor 15	4,105 RSF
Floor 14	4,527 RSF
Floor 12	4,690 RSF
Floor 11	4,949 RSF
Floor 10	4,949 RSF
Floor 9	5,207 RSF
Floor 8	5,207 RSF
Floor 7	5,515 RSF
Floor 6	5,515 RSF
Floor 5	8,359 RSF
Floor 4	8,355 RSF
Floor 3	8,371 RSF
Ground/Floor 2	Retail