

PREMIUM SHORT-TERM SUBLEASE

340 MADISON

Loft-like Ceiling Heights
Adjacent to Grand Central



ENTIRE 19TH

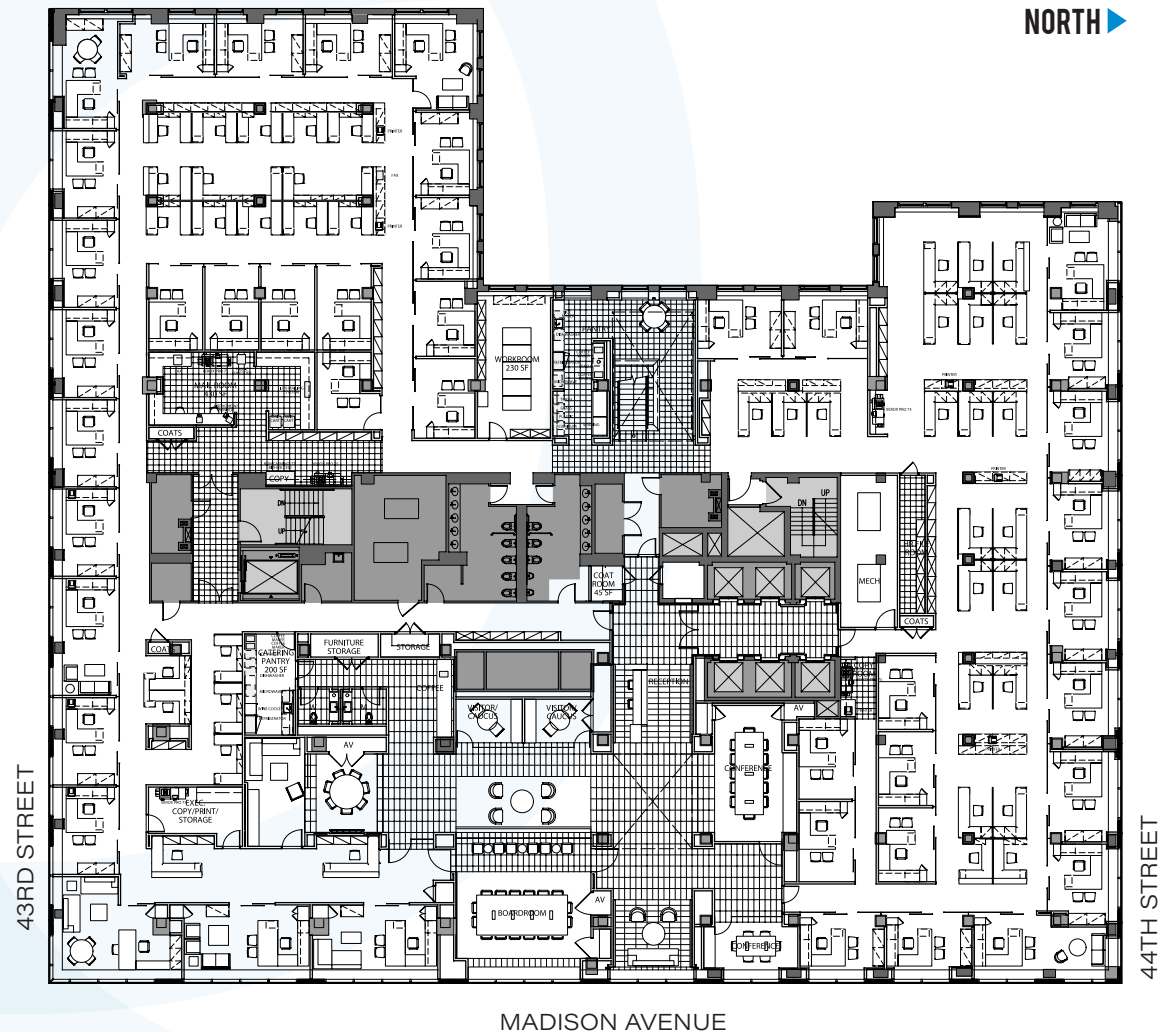
36,250 RSF

TERM

Through August 30, 2023

FEATURES

- Plug and Play opportunity
- Double height ceilings
- 33 windowed offices
- 12 internal offices
- 1 executive board room with full A/V capability
- 4 conference rooms (2 with full A/V capability)
- 2 pantries
- Bright space with 360-degree views
- Grand reception area
- Floor-to-ceiling glass fronted private offices/conference rooms
- Great access to Grand Central Station



*Furniture in some areas may have been updated to create greater density.





