

THE NEW 1201 BROADWAY

1201
BROADWAY

Term: 10 years | Direct

Partial 3rd Floor | 4,006 SF

Partial 5th Floor | 1,693 SF

Partial 7th Floor | 1,401 SF

Partial 9th Floor | 1,401 SF

Entire 10th Floor | 1,640 SF



Partial 3rd Floor | 4,006 SF

Availabilities

POSSESSION SEPTEMBER 2020

ON THE CORNER OF WEST 29TH STREET AND BROADWAY

Space Features

10TH FLOOR

- **Brand New Renovated Lobby**
- 10'5"-Foot Ceilings
- Unobstructed views of Empire State Building
- Exposed ceiling; Polished concrete floors
- Tenant controlled A/C

9TH FLOOR

- Brand new double corner unit
- Great Natural Light & Views along Broadway
- Exposed ceiling; Polished concrete floors
- Tenant controlled A/C

1201
BROADWAY

Lobby



Northern Views



Southern Views

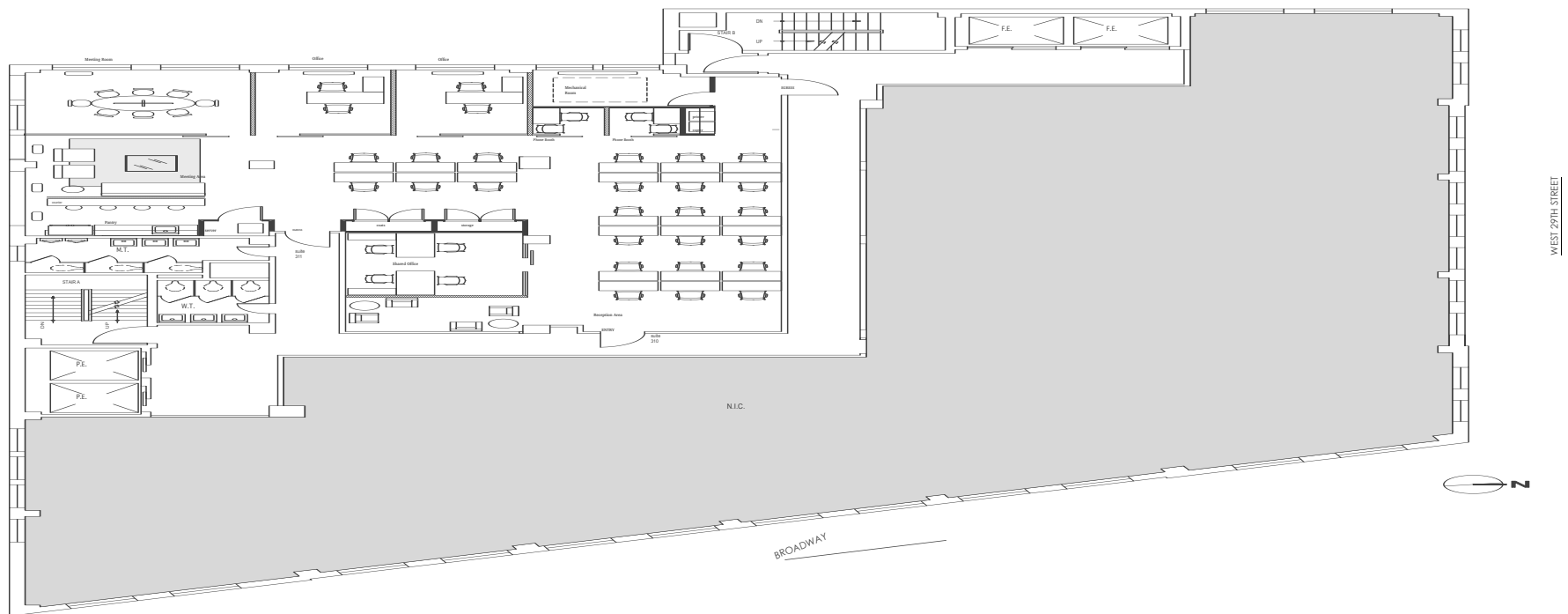


1201

BROADWAY

PARTIAL 3RD FLOOR 4,006 SF

Proposed test it



1201

BROADWAY

