

551 MADISON

Partial 9th floor

4,056 RSF

- + Custom buildout by landlord
- + Corner office overlooking Madison Ave
- + Owner-occupied building
- + Recently renovated lobby with 24/7 attendant



551 MADISON

Partial 9th floor
4,056 RSF

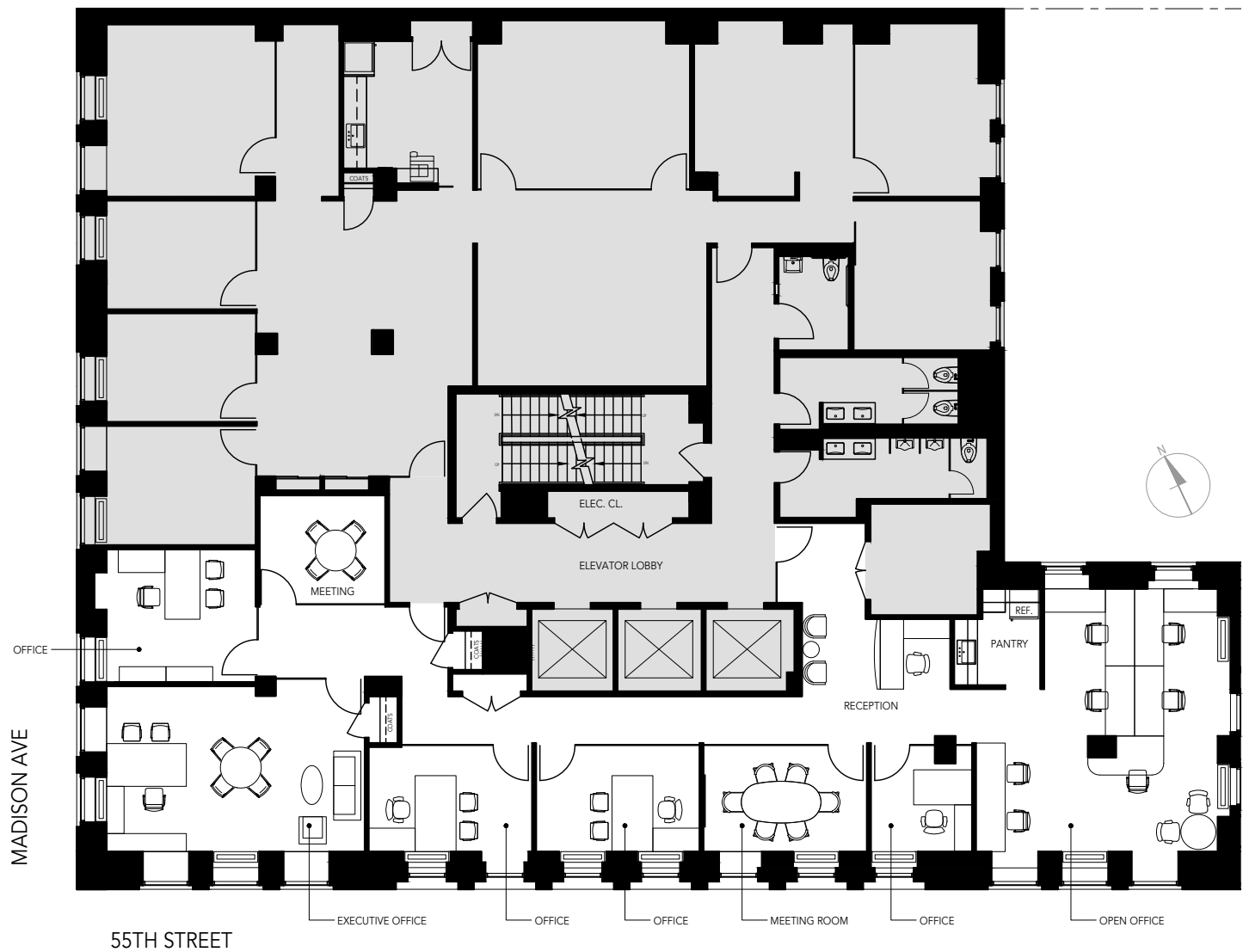
Designed for work.

551 Madison is a 17-story modern building in the heart of the Plaza District. Designed for meaningful work, our spaces feature mindful touches that enhance focus, productivity, and collaboration.



551 MADISON

Partial 9th floor
4,056 RSF



551 MADISON

Partial 9th floor 4,056 RSF

FEATURES

- + Custom buildout by landlord
- + Recently renovated entry lobby with 24/7 attendant
- + HVAC controlled by individual offices
- + Corner office overlooking Madison Ave
- + Owner-occupied building



Space rendering, breakfast nook



Space rendering, reception desk



Space rendering, conference room

551 MADISON

Partial 9th floor

4,056 RSF



Space rendering,
arrival lounge



Space rendering, arrival lounge



Space rendering, conference room and hallway

551 MADISON

Partial 9th floor
4,056 RSF

4th floor conference room



4th floor private lounge and event space

551 MADISON

Partial 9th floor
4,056 RSF

Service and amenities

24/7 Concierge Check-In

You clients will enter through our recently renovated lobby and check-in with our professional 24/7 attendant.

Owner-Occupied

The Lexin Capital ownership team is located on the 4th floor. We're on a first-name basis with most of our tenants.

Premier Management

Cushman & Wakefield is known as a top-tier management company. Our service and building staff are among the best.

Private Lounge & Event Space

Our private lounge and meeting space can be booked by any building tenant for day or evening events.

Coffee Galley

The Smeg espresso coffee machine provides a variety of coffee beverages in a few simple steps. Available with private lounge use.