



7

BRYANT PARK

New Construction
on the Park



AVAILABILITY

PARTIAL 16TH FLOOR: 4,278 RSF

Condition: Demolished

Possession: Immediate

SPACE + BUILDING FEATURES

- ◆ Column-free tower floors
- ◆ Floor-to-ceiling, 10-foot wide windows
- ◆ Slab heights of 14'–15'
- ◆ Efficient side-core floor plates
- ◆ Direct access to the B/D/F/M/7 and close proximity to 1/2/3/A/C/E subway stations. 10-minute walk from Grand Central and Penn Station, and 7-minute walk to Port Authority



RAW SPACES

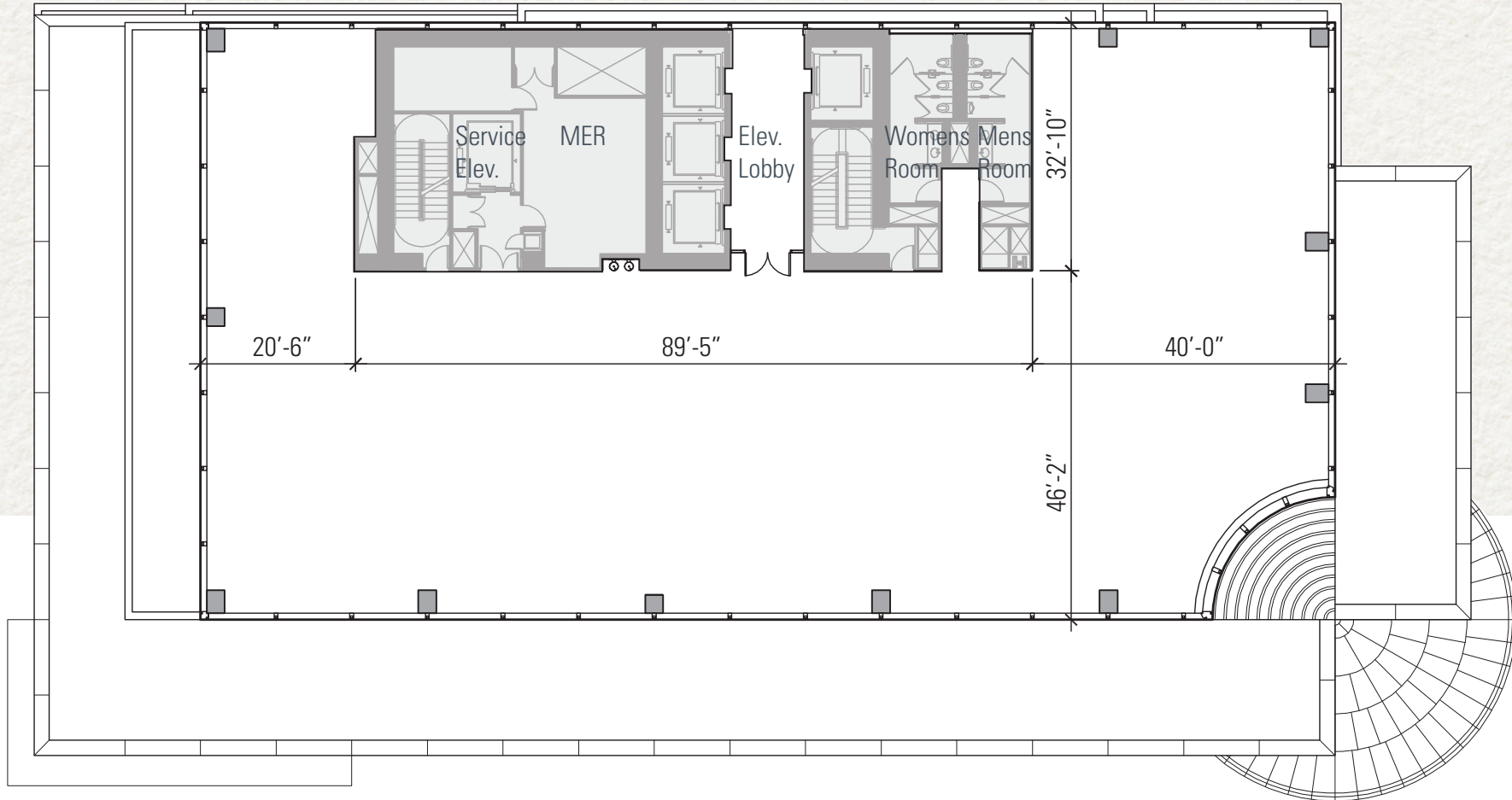
Entire 26th Floor: 14,074 RSF + Partial 16th Floor: 4,278 RSF



UNOBSTRUCTED PANORAMIC VIEWS



TYPICAL HIGH RISE CORE + SHELL PLAN



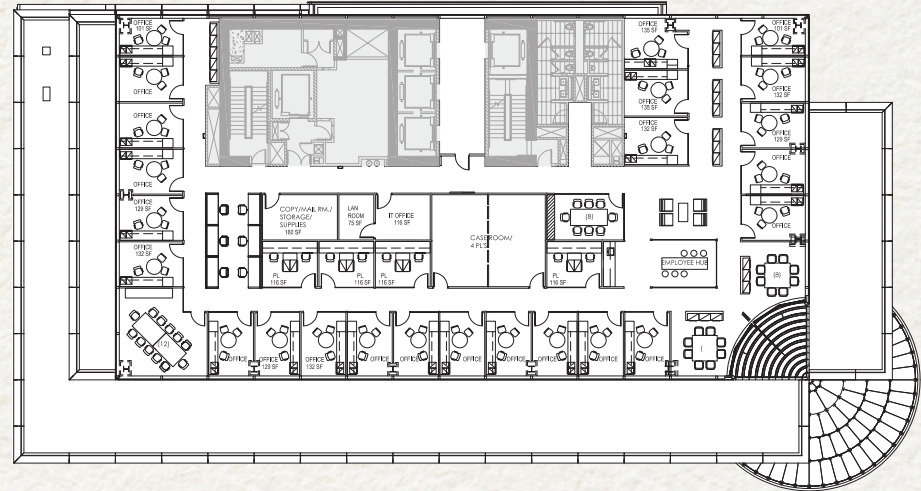
TYPICAL HIGH RISE - FULL FLOOR SAMPLE TEST FITS

OFFICE/LEGAL

Offices: 28

Workstations: 6

Conference Rooms: one, 12-person; one, 8-person

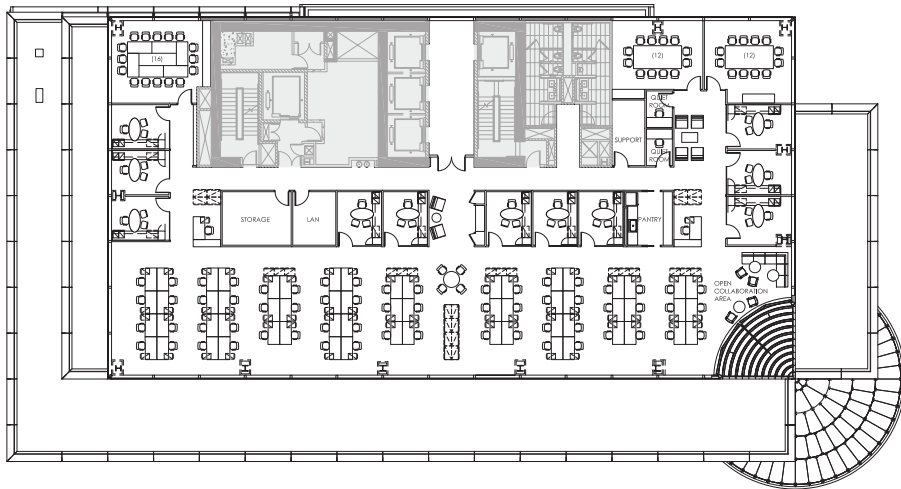


HEDGE FUND

Offices: 11

Workstations: 70

Conference Rooms: one, 16-person; two, 12-person

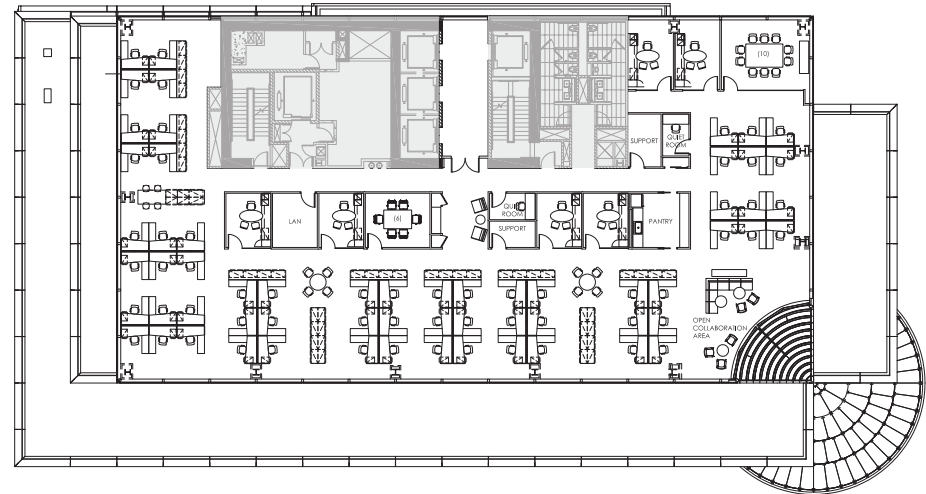


OPEN PLAN

Offices: 6

Workstations: 62

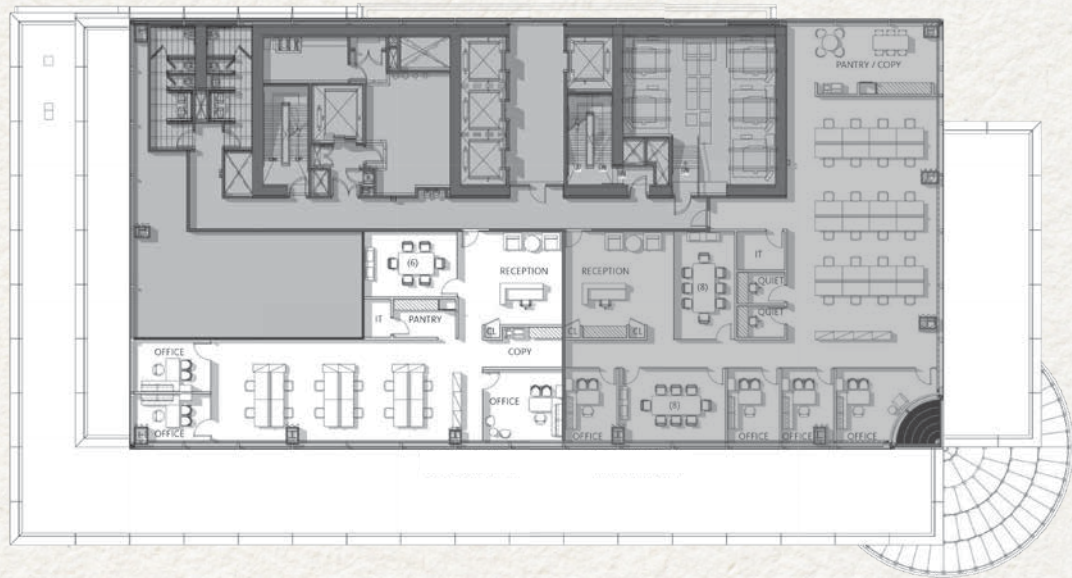
Conference Rooms: one, 10-person; one, 6-person



PARTIAL 16TH FLOOR - SAMPLE TEST FITS

4,278 RSF

Offices: 3
Workstations: 12
Conference Rooms: one, 6-person



Offices: 5
Workstations: 8
Conference Rooms: one, 6-person

